



AXPROCONCEPT

Organic Collection

Contract Wallpaper





AXPROCONCEPT

Organic Collection

Contract Wallpaper

AxPro Concept
Contract Wall



Organic is a collection of timeless designs inspired by nature.

The possibility of their individual modification allows for creating unique and perfectly harmonious interiors.

The construction of vinyl wallpaper, on the textile backing, AxPro Contract Wall provides the highest resistance to damage and ease of use.

As part of the AxPro Construction offer, we provide an assembly service that guarantees durability for many years in the most demanding commercial spaces.

Organic to kolekcja ponadczasowych wzorów inspirowanych naturą.

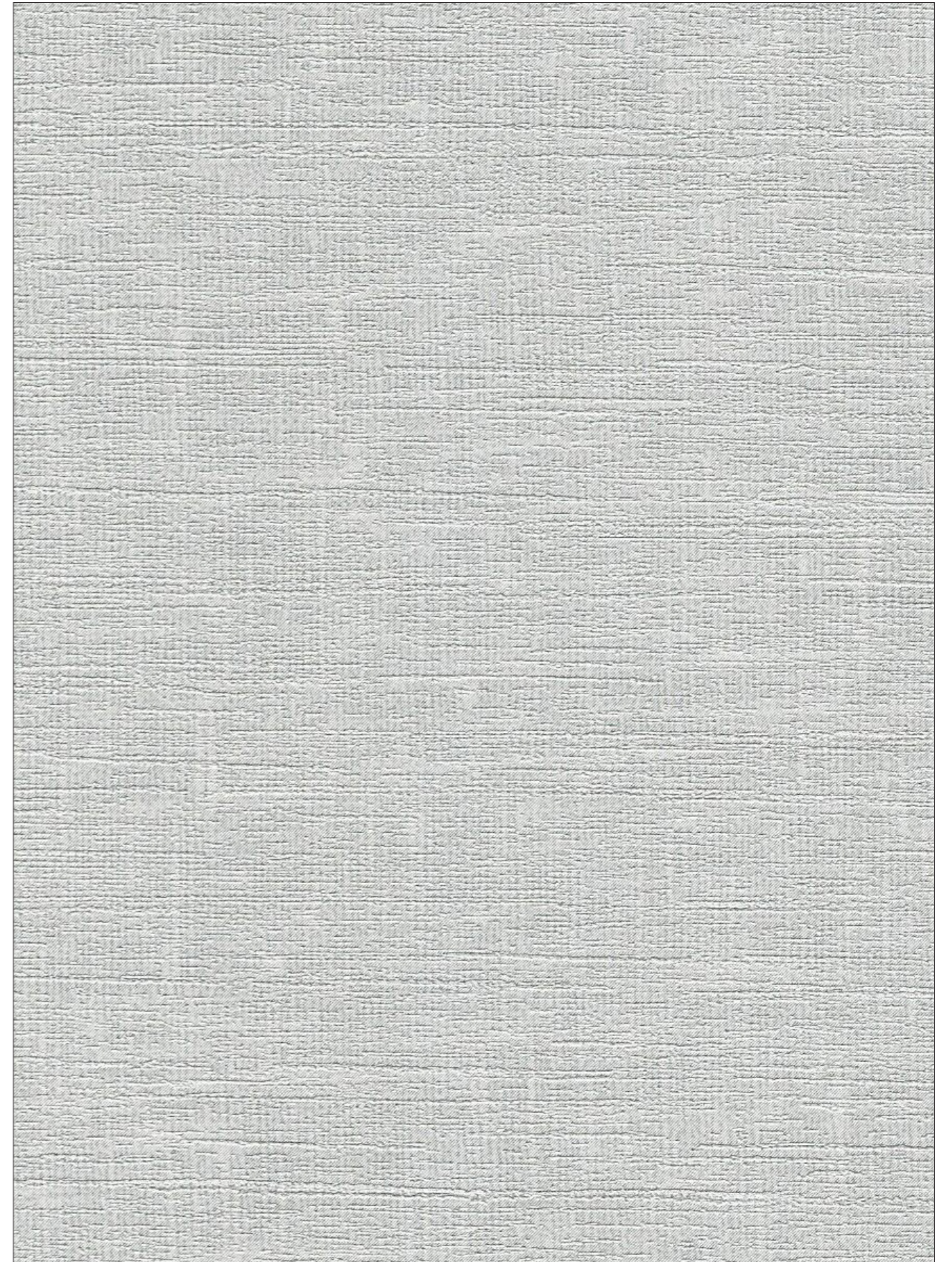
Możliwość ich indywidualnych modyfikacji pozwala na kreowanie unikalnych i doskonale harmonijnych wnętrz.

Konstrukcja tapet winylowych, na spodzie tekstylnym, AxPro Contract Wall zapewnia najwyższą odpornością na uszkodzenia i łatwość użytkowania.

W ramach oferty AxPro Construction zapewniamy usługę montażu, gwarantującą trwałość na długie lata, w najbardziej wymagających przestrzeniach komercyjnych.

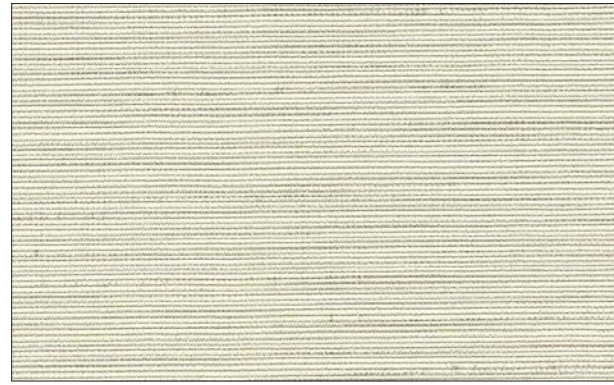


MWB4003a

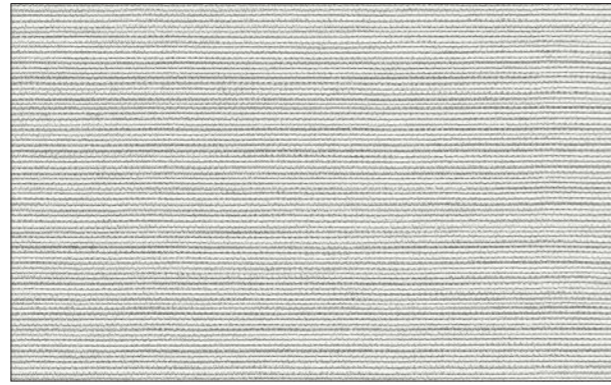


MWB4003a

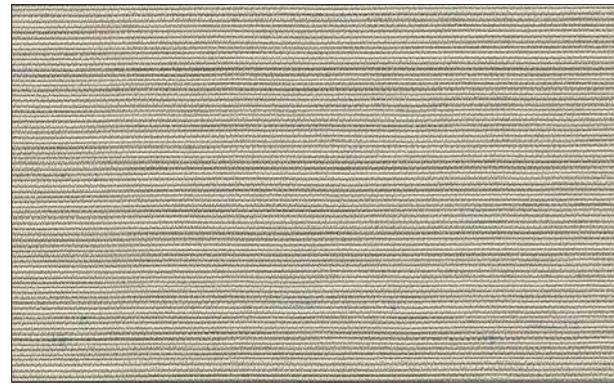
Hekla



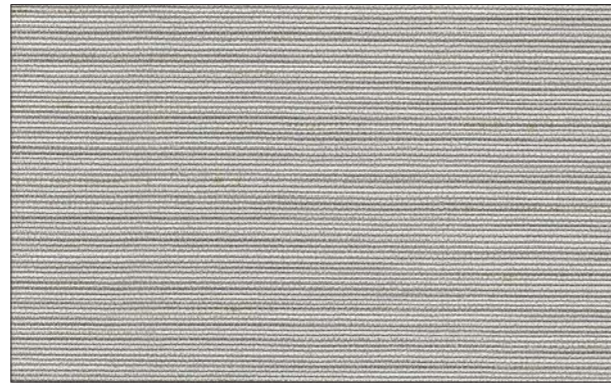
MWB2001b



MWB2003b



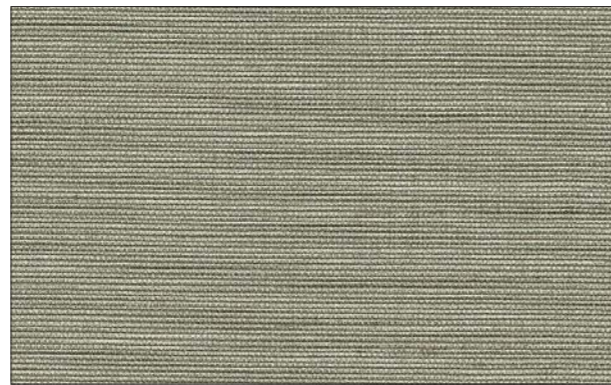
MWB2005b



MWB2004b



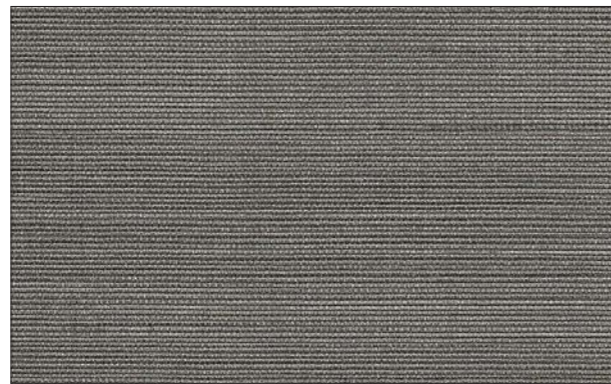
MWB2006b



MWB2007b

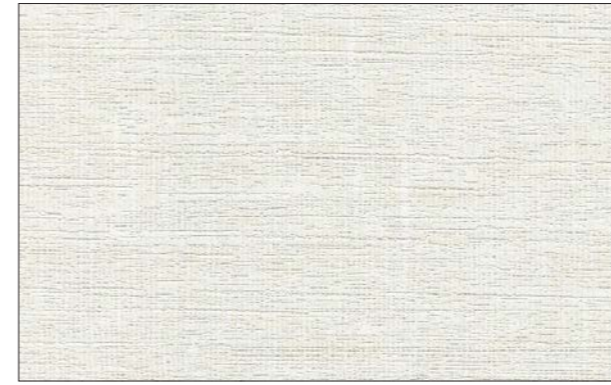


MWB2008b

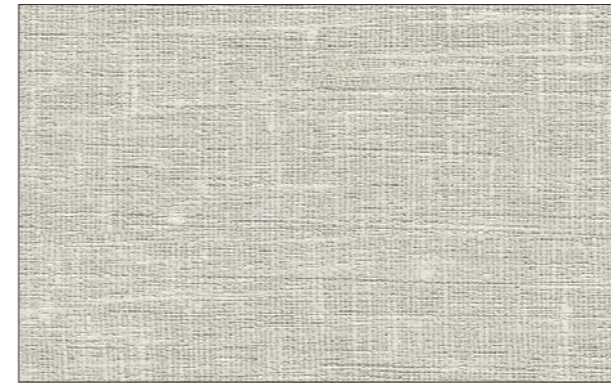


MWB2009b

Lascar



MWB4001a



MWB4002a

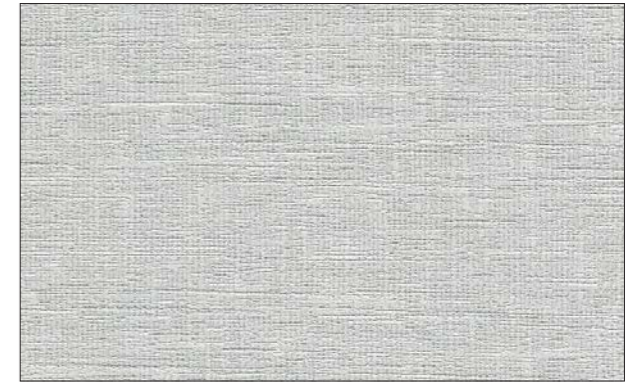


MWB4004a



MWB4007a

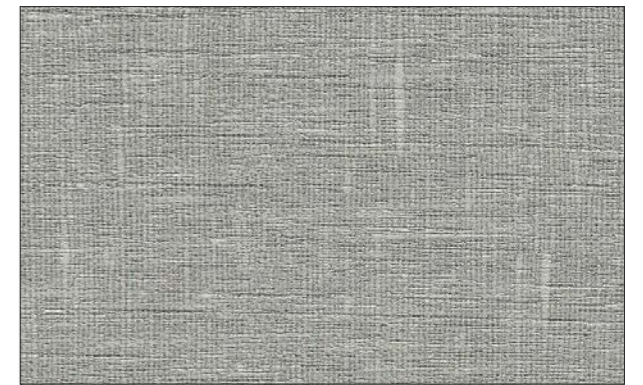
Organic Collection



MWB4003a



MWB4006a



MWB4005a



MWB4008a



BE2011

Erebus

Organic Collection



BE2011



BE2004



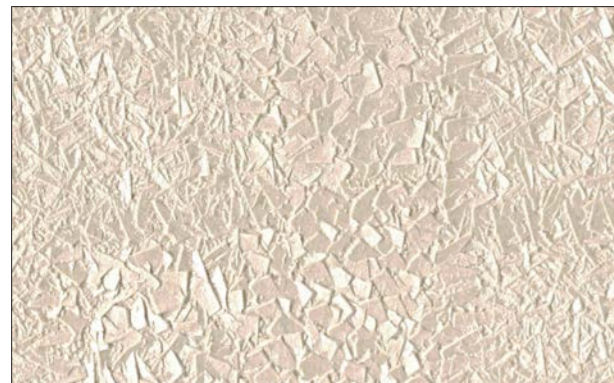
BE2002



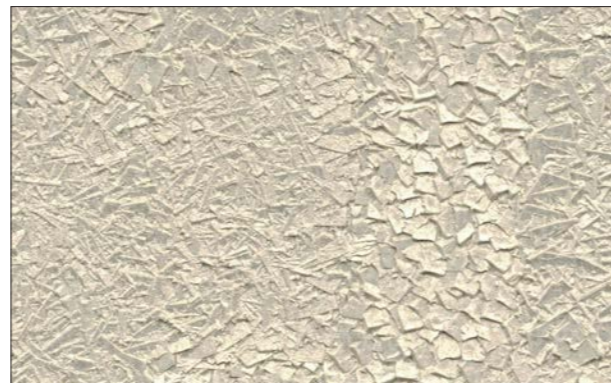
BE2003



BE2008



BE2010



BE2005



BE2007



BE2011

Erebus

Organic Collection



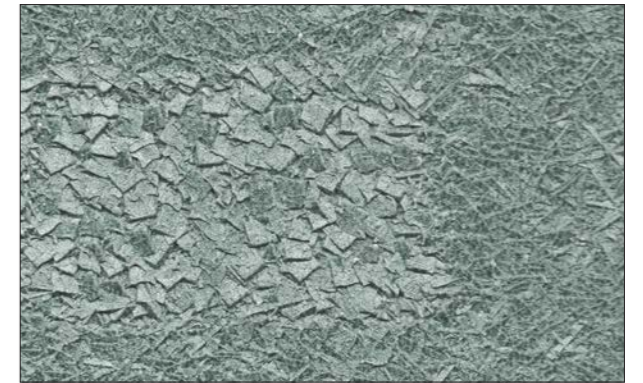
BE2013



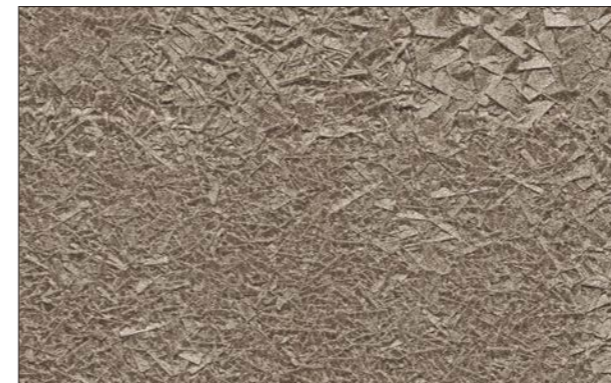
BE2014



BE2015



BE2017



BE2016



BE2012



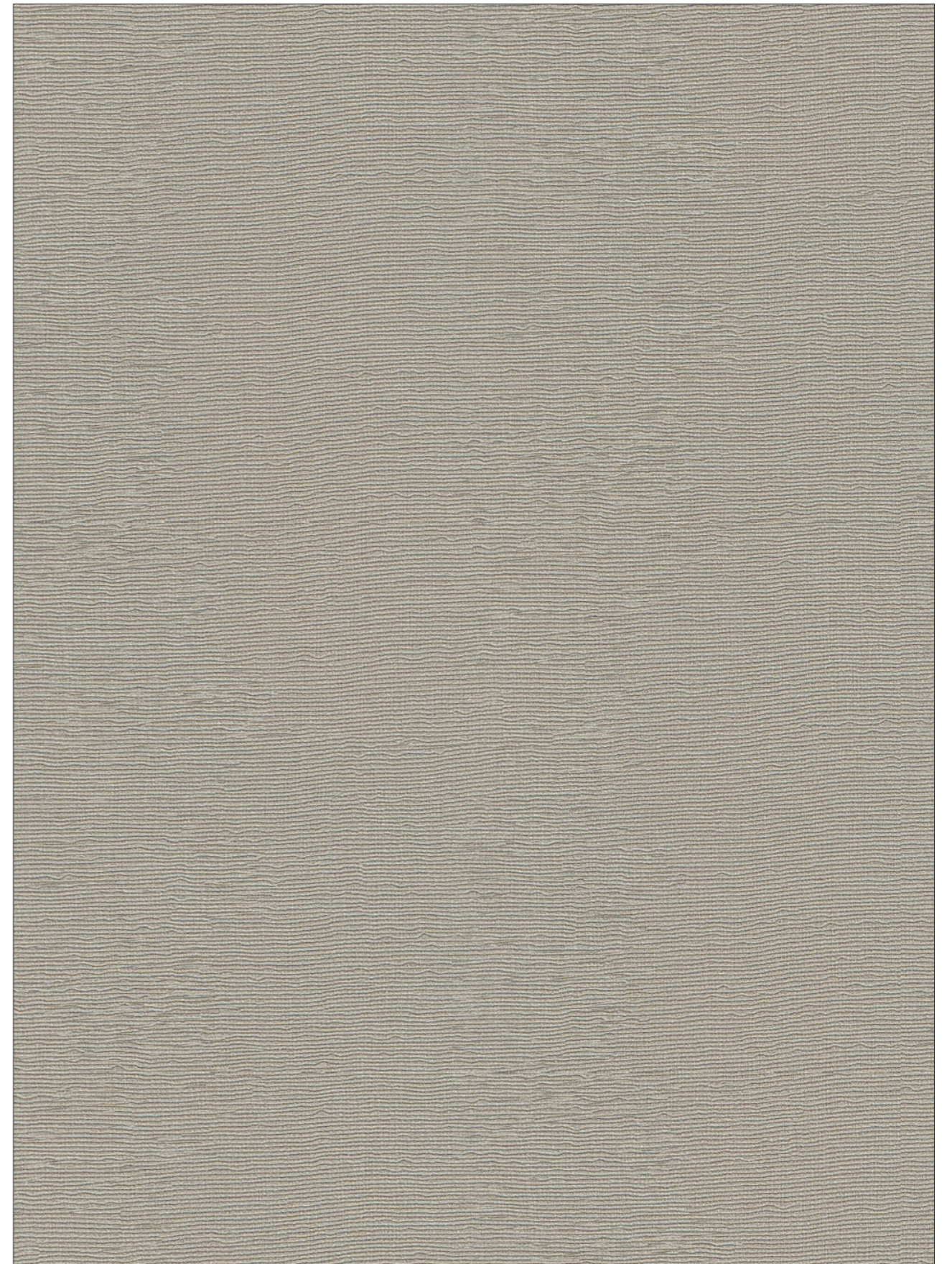
BE2018



BE2019

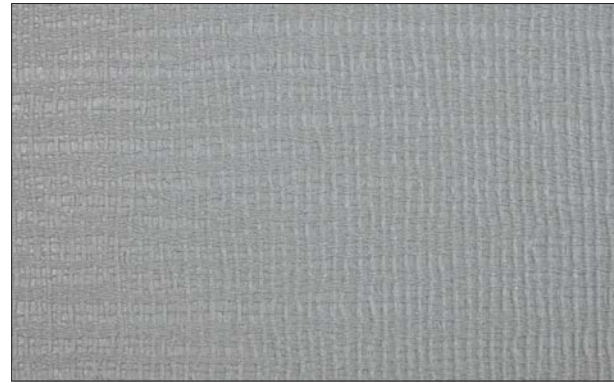


BE7008



BE7008

Colima



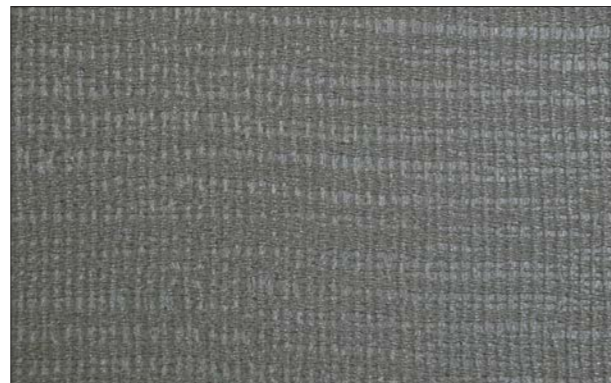
BE7005



BE7008



BE7020



BE7013



BE7011



BE7014

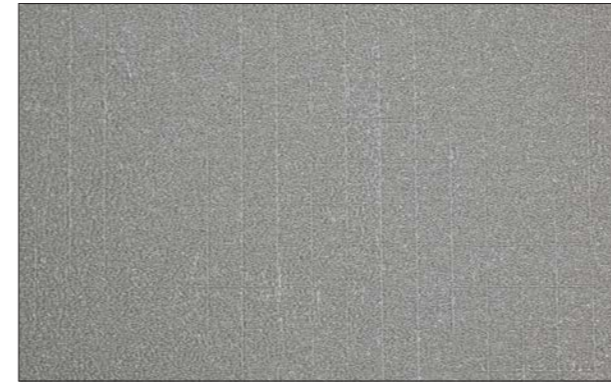


BE7007



BE7012

Meru



BH7007



BH7010



BH7017



BH7013

Organic Collection



BH7006



BH7012



BH7018



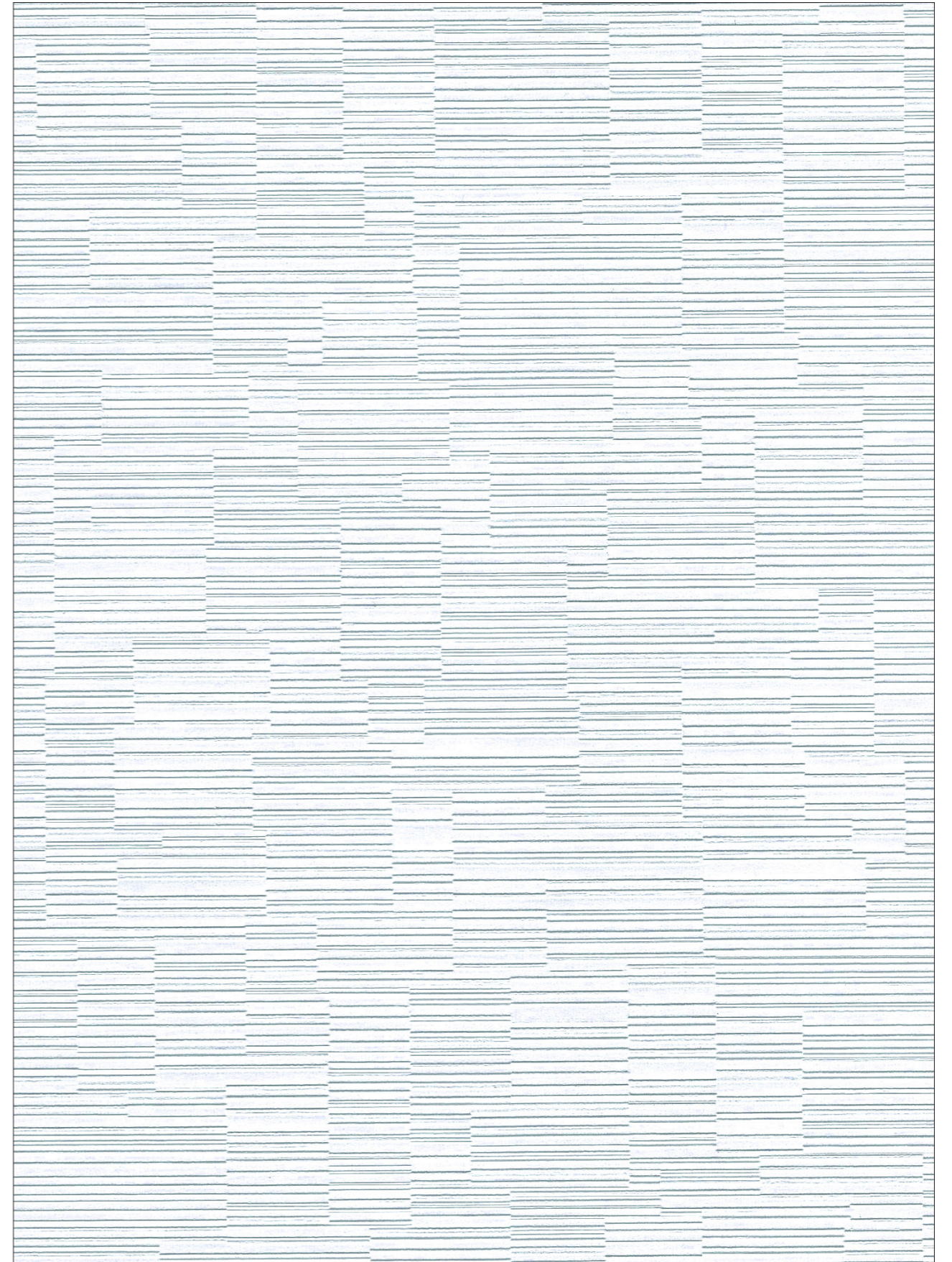
BH7019



BE8003

Vesuvius

Organic Collection



BE8003



BE8003



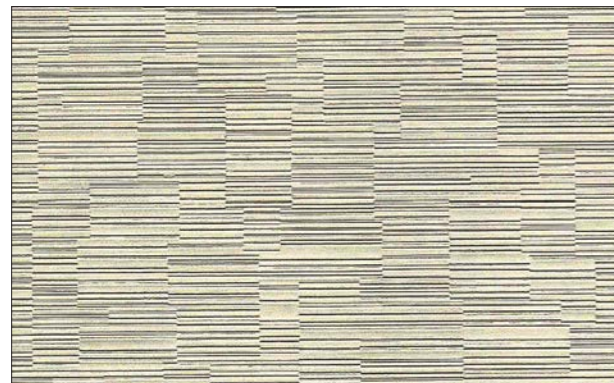
BE8001



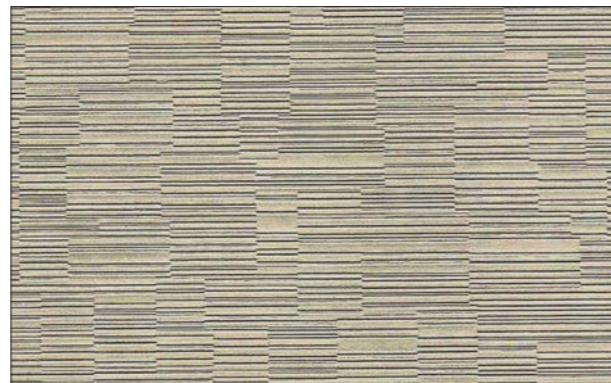
BE8002



BE8004



BE8005



BE8011



BE8010



BE8008

Vesuvius

Organic Collection



BE8006



BE8007



BE8013



BE8009



BE8015



BE8012



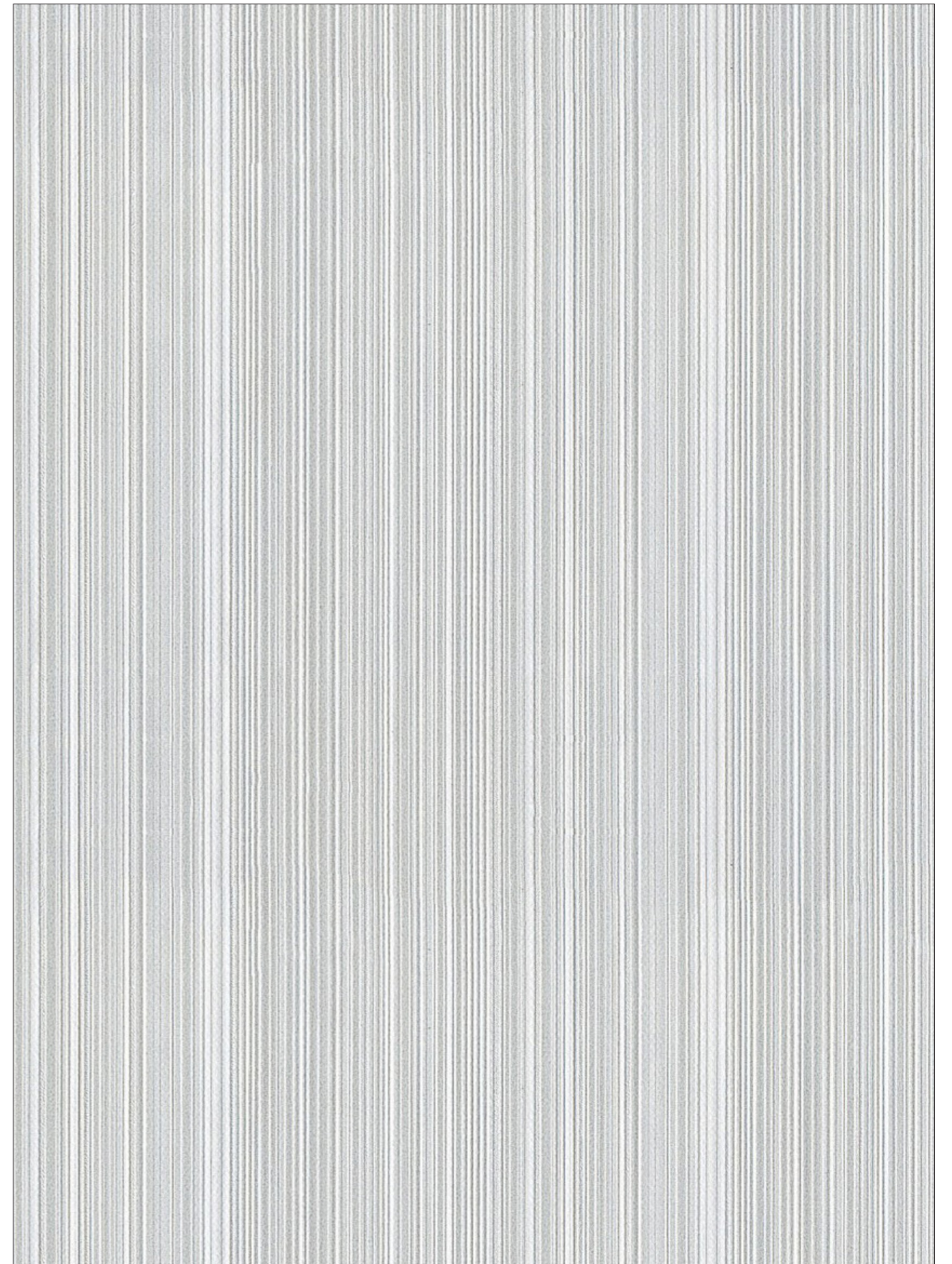
BE8014



BE8016



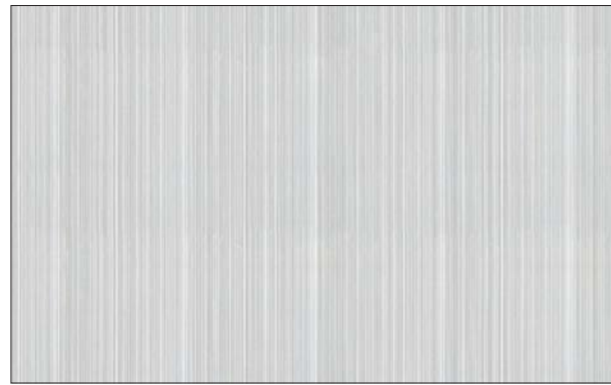
BE9001



BE9001



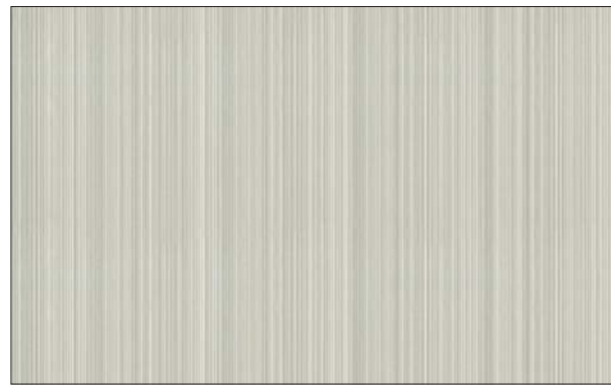
BE9003



BE9001



BE9008



BE9002



BE9007



BE9011



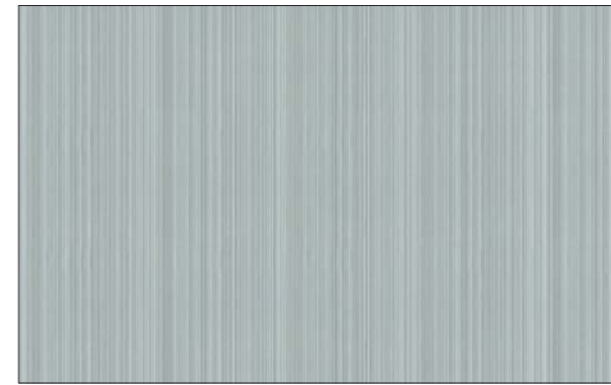
BE9016



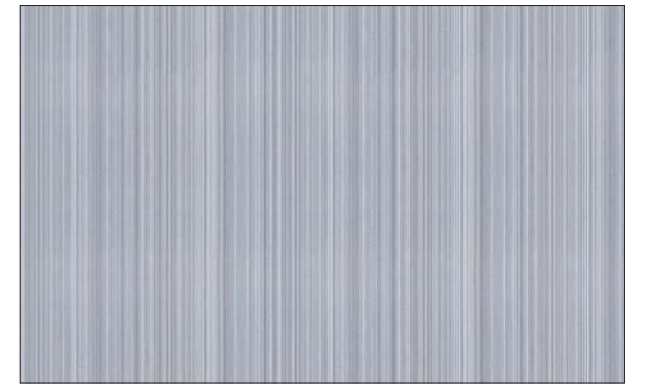
BE9015

Katla

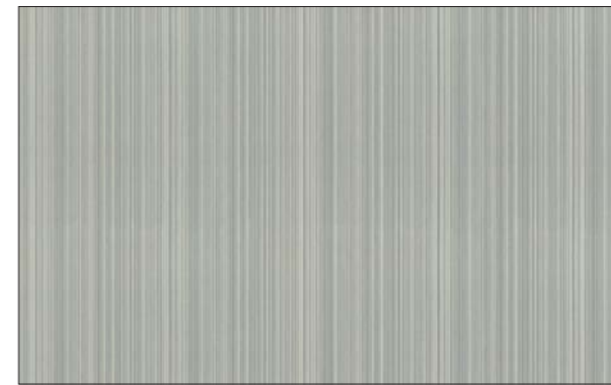
Organic Collection



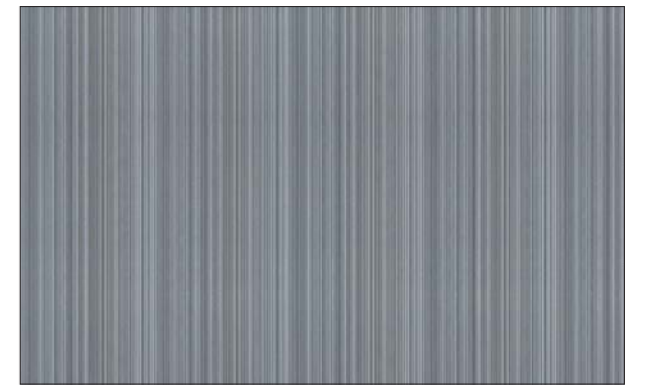
BE9019



BE9005



BE9006



BE9009



BE9013



BE9014



BE9018



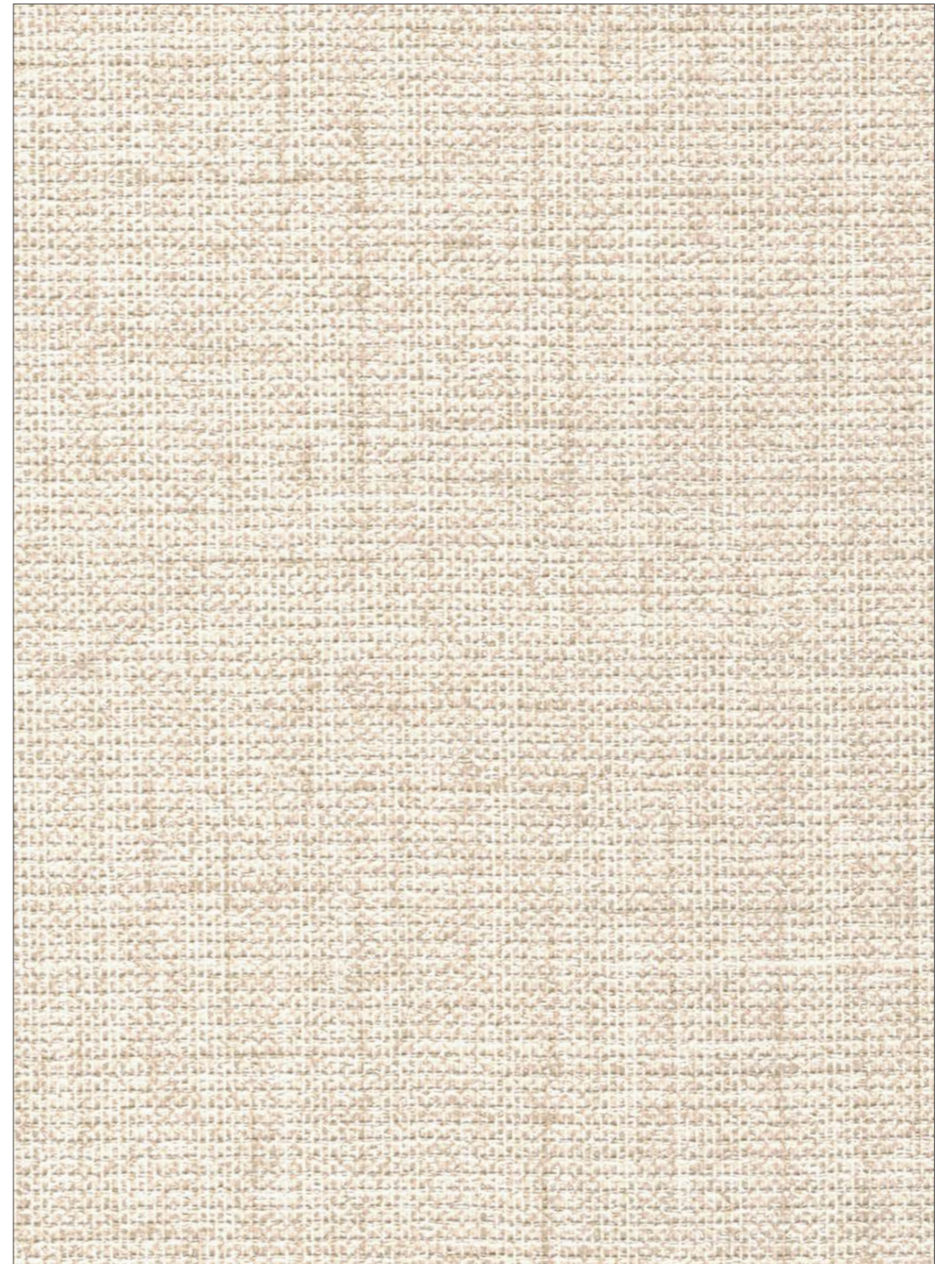
BE9017

Elbrus and Askja

Organic Collection

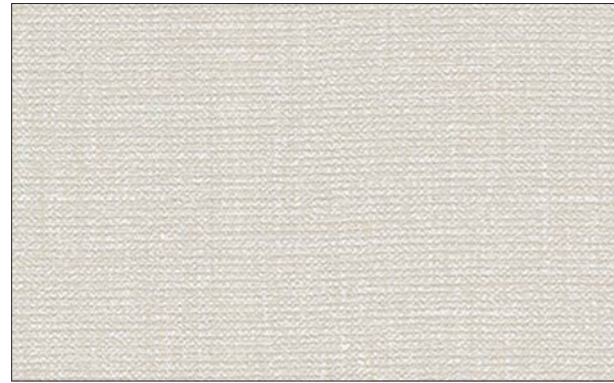


DC2004



DC2004

Elbrus



DC2001



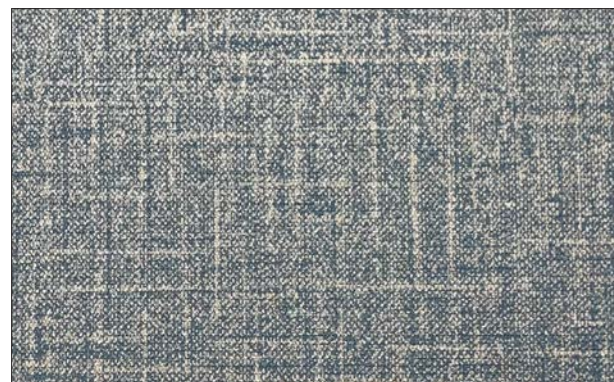
DC2004



DC2006



DC2009



DC2007



DC2003

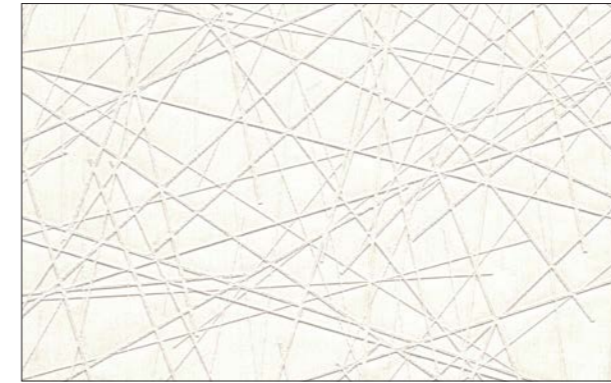


DC2010



DC2008

Askja



BB1008



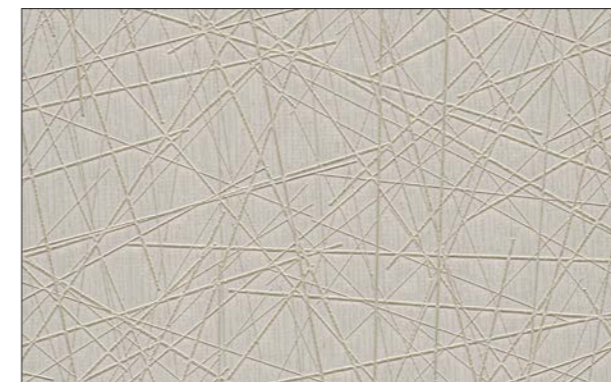
BB1003



BB1004



BB1017



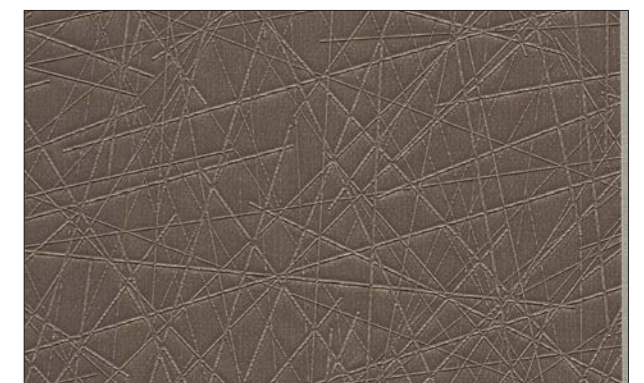
BB1005



BB1010



BB1002



BB1016

Organic Collection



BH1008

Etna and Apo

Organic Collection

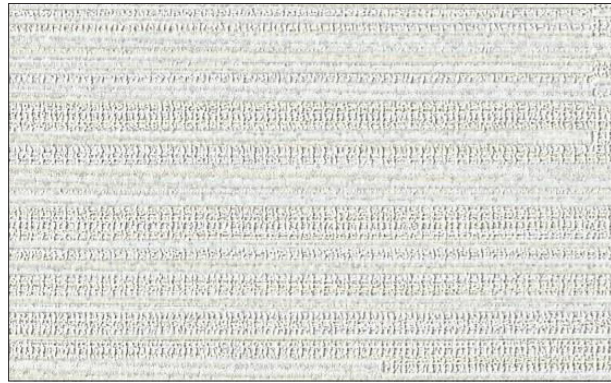


BH1008

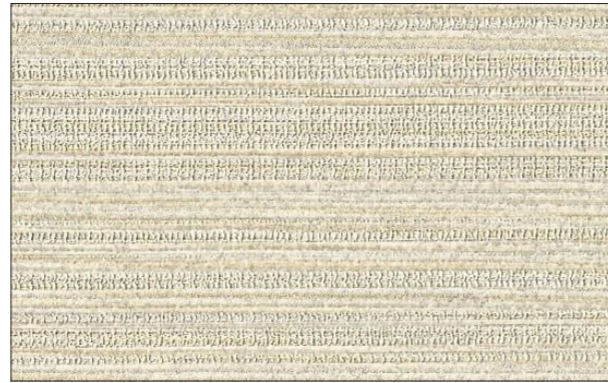
Etna

Apo

Organic Collection



MWB5001b



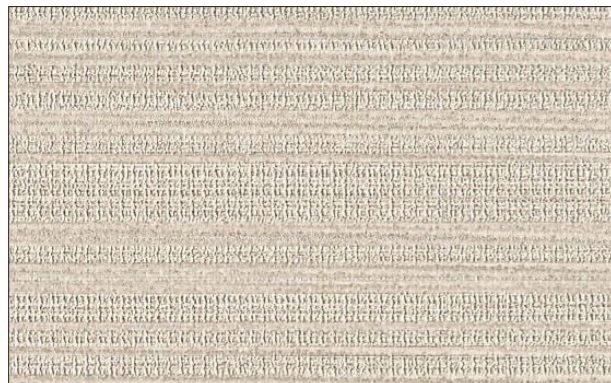
MWB5002b



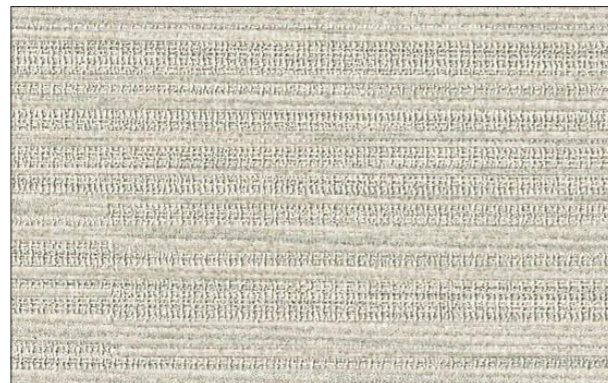
BH1001



BH1004



MWB5003b



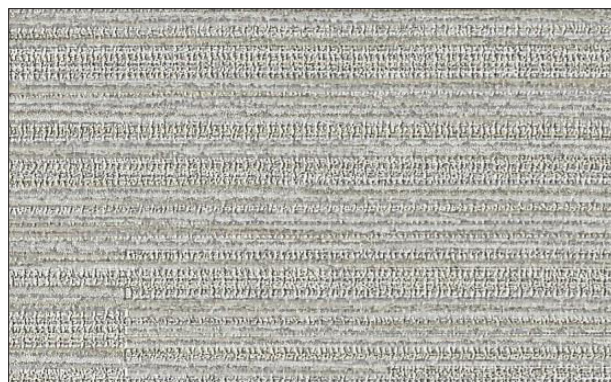
MWB5004b



BH1003



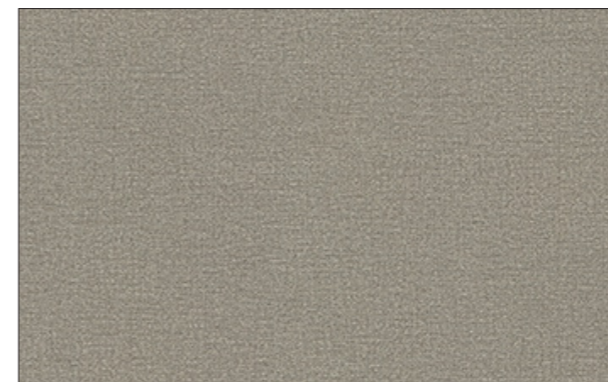
BH1005



MWB5007b



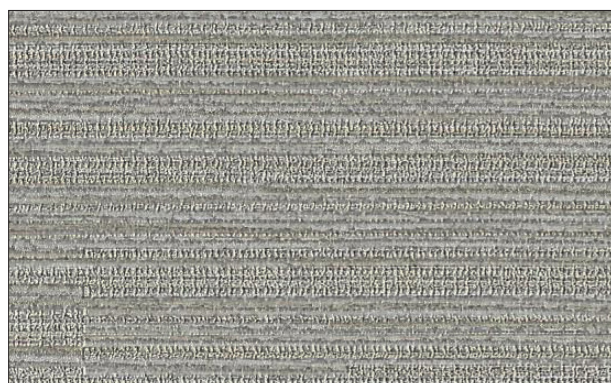
MWB5006b



BH1007



BH1008



MWB5008b



MWB5010b



BH1010



BH1011



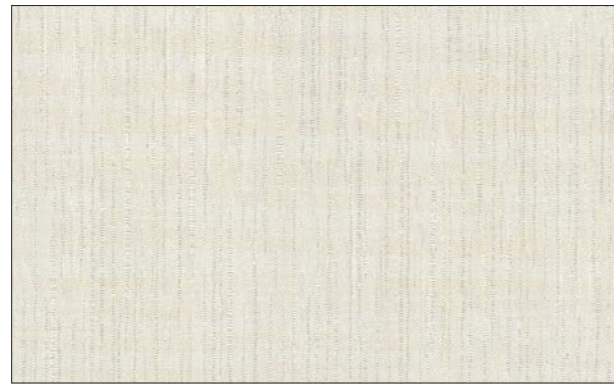
TWM21303-7

Fuji and Misti

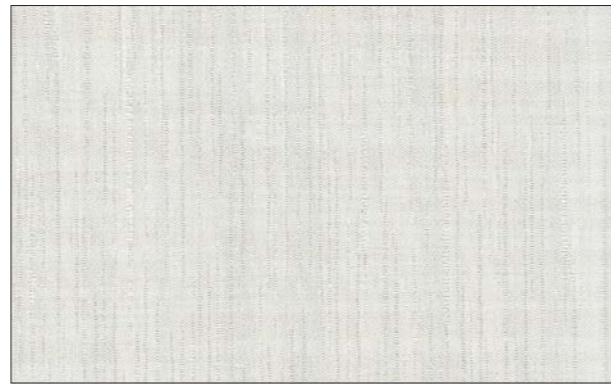


TWM21303-7

Fuji



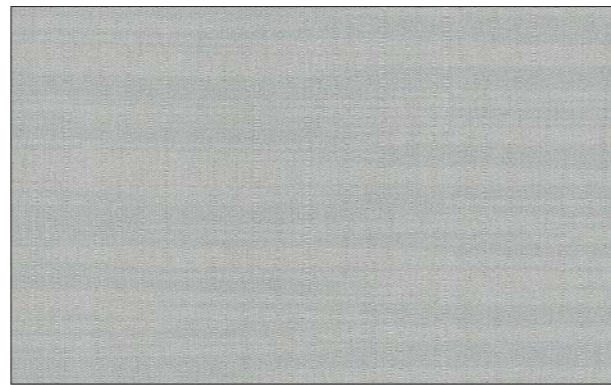
TWM21303-2



TWM21303-6



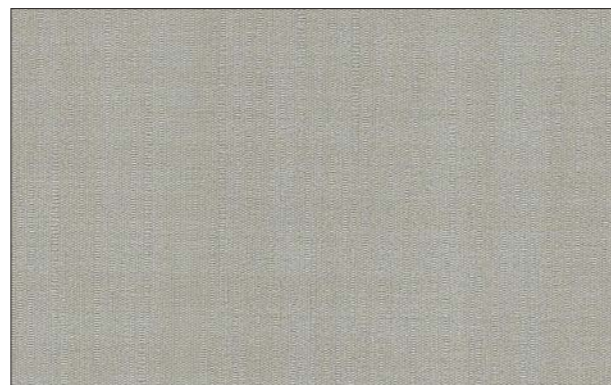
TWM21303-3



TWM21303-7



TWM21303-4



TWM21303-8



TWM21303-5



TWM21303-1

Misti



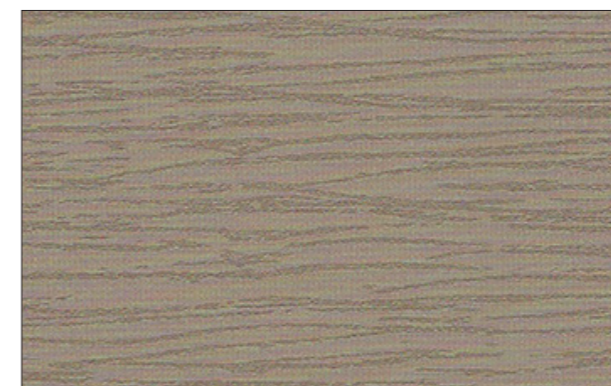
TWM21104-2



TWM21104-3



TWM21104-4



TWM21104-5

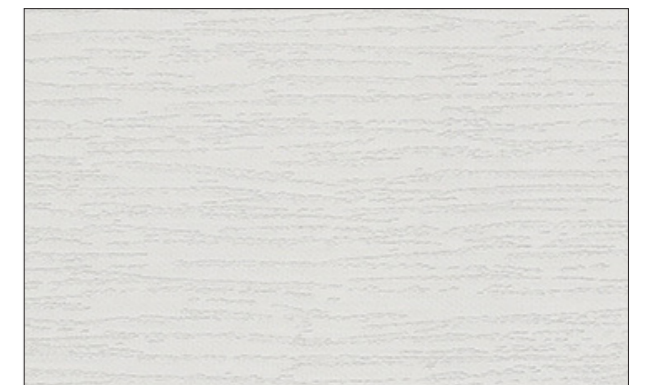
Organic Collection



TWM21104-1



TWM21104-6



TWM21104-8



TWM21104-9

COMMERCIAL WALLCOVERING SPECIFICATIONS

pattern no.	size/roll	weight	material
MWBa	1.3m*30m	340 g/m ²	Fabric back, vinyl coated
MWBb	1.3m*30m	450 g/m ²	Fabric back, vinyl coated
BE	1.1m*50m	450 g/m ²	Fabric back, vinyl coated
BH	1.1m*50m	340 g/m ²	Fabric back, vinyl coated
DC	1.1m*50m	340 g/m ²	Fabric back, vinyl coated
BB	1.37m*30m	450 g/m ²	Fabric back, vinyl coated
PF	1.1m*50m	450 g/m ²	Fabric back, vinyl coated

FIRE RATING

EUROPE STANDARD: EN13501-1 Class B-s1,d0

SMOKE EMISSION: s1

FLAME DROPLETS: d0

USA STANDARD: ASTM E84 Class A

FLAME SPREAD: 10

SMOKE DEVELOPED: 10

ANTI-MICROBIAL FEATURES

STANDARD: GB/T2423.16-2008 Class 0-1

AxPro Concept wallcoverings contain mold resistant additives to resist the growth of mold and mildew under normal conditions. However, wall surface must be clear of mold and no water vapor or moisture infiltration and use only mold-resistant glue and primer while hanging.

FORMALDEHYDE FREE

WASHABLE, COLORFAST, SCRATCH PROOF

NO HEAVY METALS

LOW VOC

CE CERTIFIED



AXPROCONCEPT

AxPro Concept Sp. z o.o.
58-506 Jelenia Góra, ul. Wiejska 86A
tel: +48 795 522 022
info@axproconcept.com
www.axproconcept.com