



AXPRØCONCEPT

Organic Collection

Contract Wallpaper





AXPROCONCEPT

Organic Collection

Contract Wallpaper

AxPro Concept
Contract Wall



Organic is a collection of timeless designs inspired by nature.

The possibility of their individual modification allows for creating unique and perfectly harmonious interiors.

The construction of vinyl wallpaper, on the textile backing, AxPro Contract Wall provides the highest resistance to damage and ease of use.

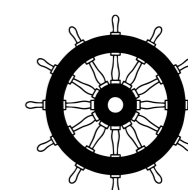
As part of the AxPro Construction offer, we provide an assembly service that guarantees durability for many years in the most demanding commercial spaces.

Organic to kolekcja ponadczasowych wzorów inspirowanych naturą.

Możliwość ich indywidualnych modyfikacji pozwala na kreowanie unikalnych i doskonale harmonijnych wnętrz.

Konstrukcja tapet winylowych, na spodzie tekstylnym, AxPro Contract Wall zapewnia najwyższą odpornością na uszkodzenia i łatwość użytkowania.

W ramach oferty AxPro Construction zapewniamy usługę montażu, gwarantującą trwałość na długie lata, w najbardziej wymagających przestrzeniach komercyjnych.

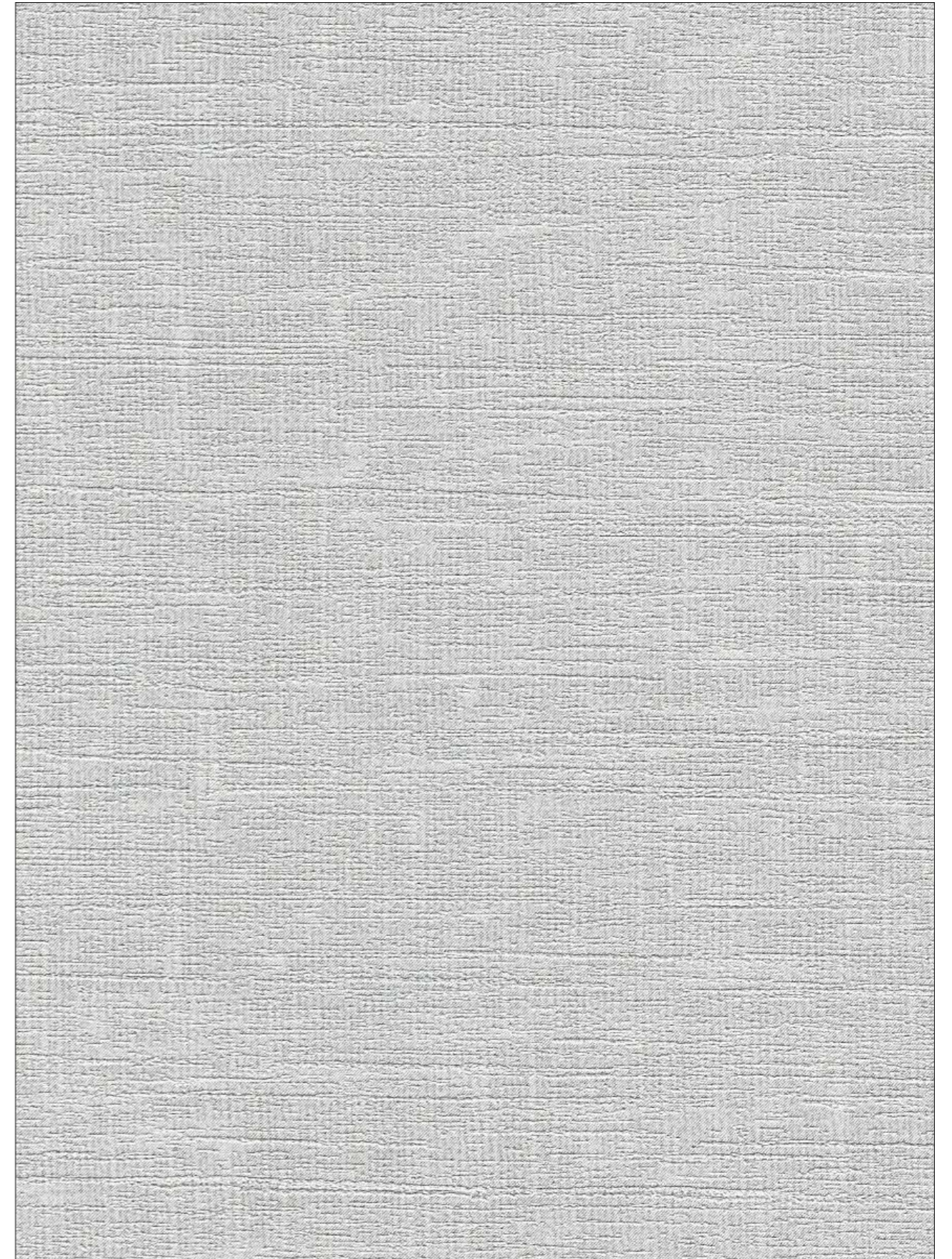




MWB4003a

Hekla and Lascar

Organic Collection



MWB4003a

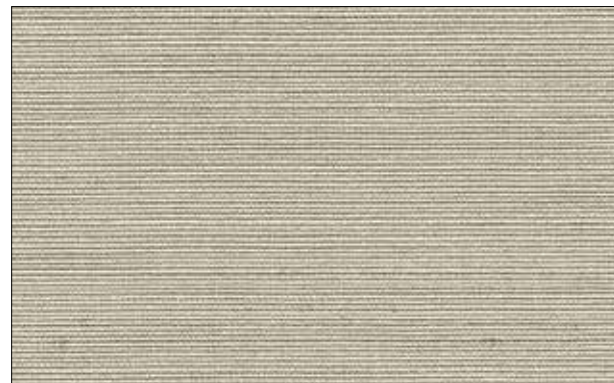
Hekla



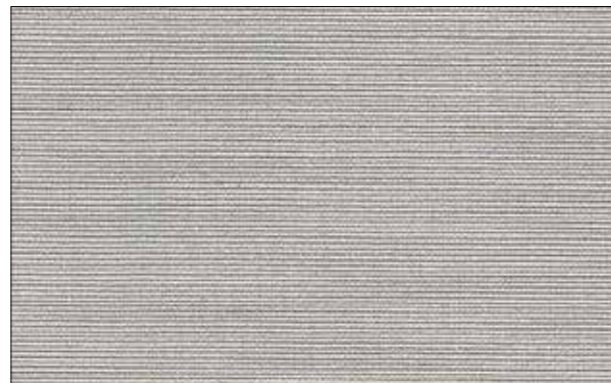
MWB2001b



MWB2003b



MWB2005b



MWB2004b



MWB2006b



MWB2007b



MWB2008b



MWB2009b

Lascar



MWB4001a



MWB4002a

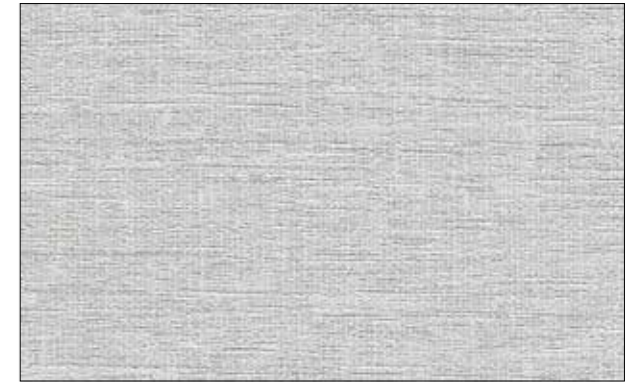


MWB4004a



MWB4007a

Organic Collection



MWB4003a



MWB4006a



MWB4005a



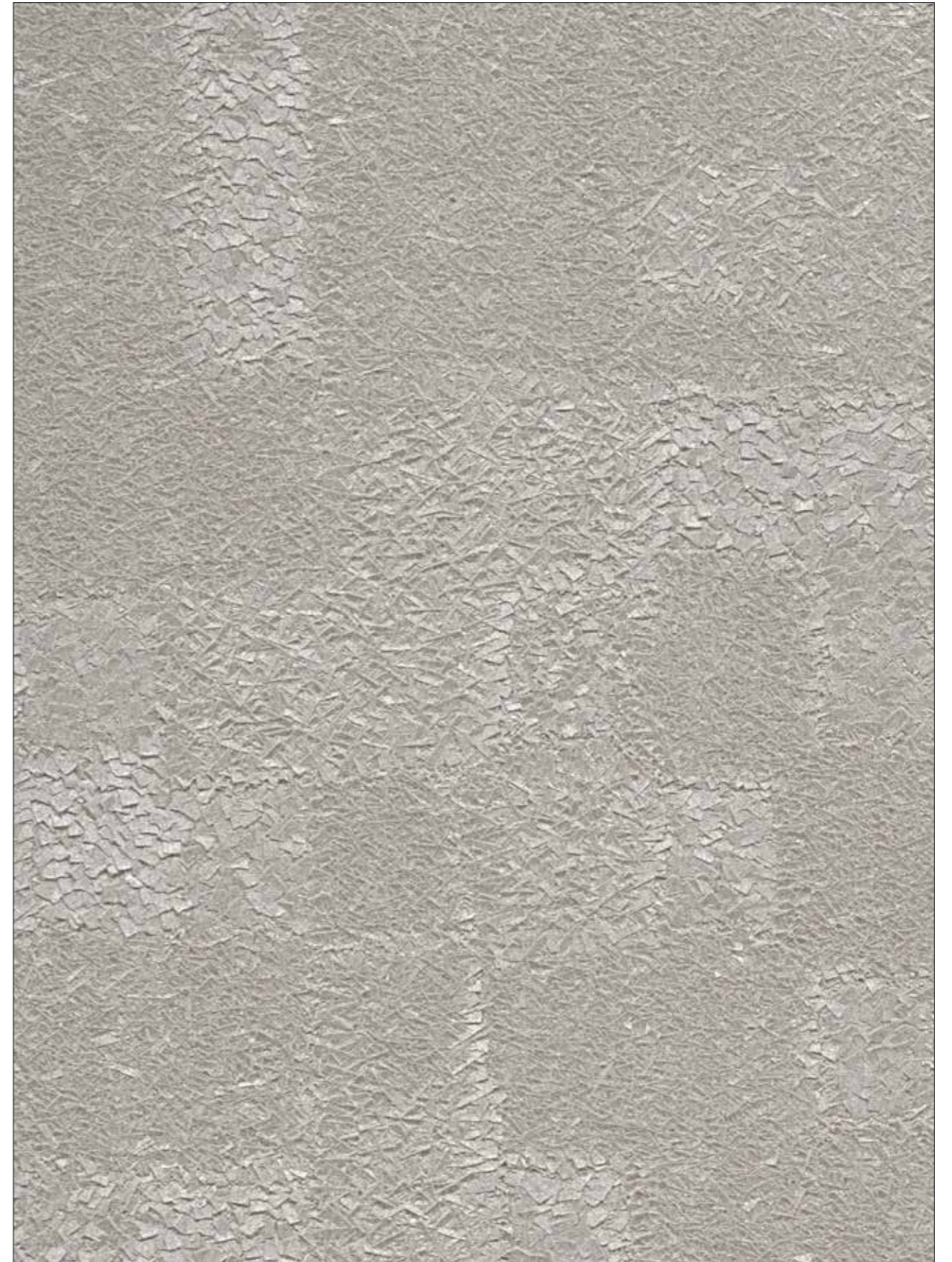
MWB4008a



BE2011

Erebus

Organic Collection



BE2011



BE2004



BE2002



BE2003



BE2008



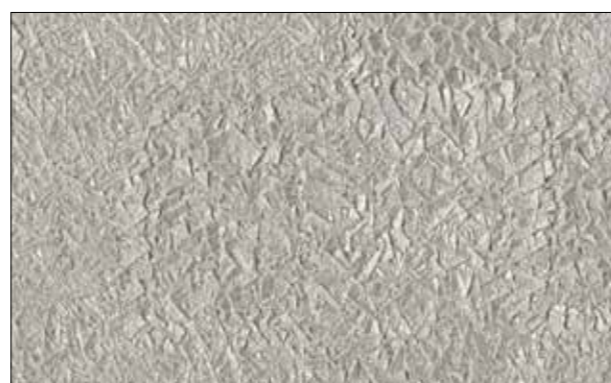
BE2010



BE2005



BE2007



BE2011

Erebus

Organic Collection



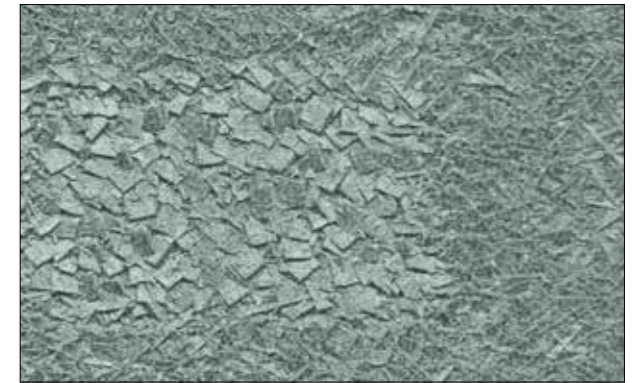
BE2013



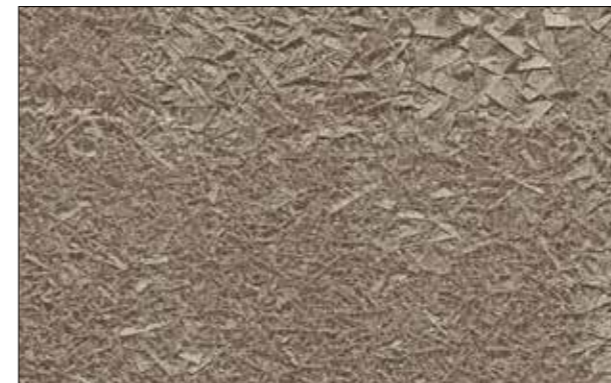
BE2014



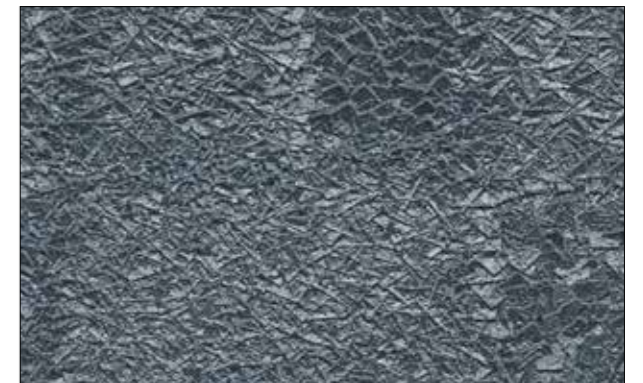
BE2015



BE2017



BE2016



BE2012



BE2018



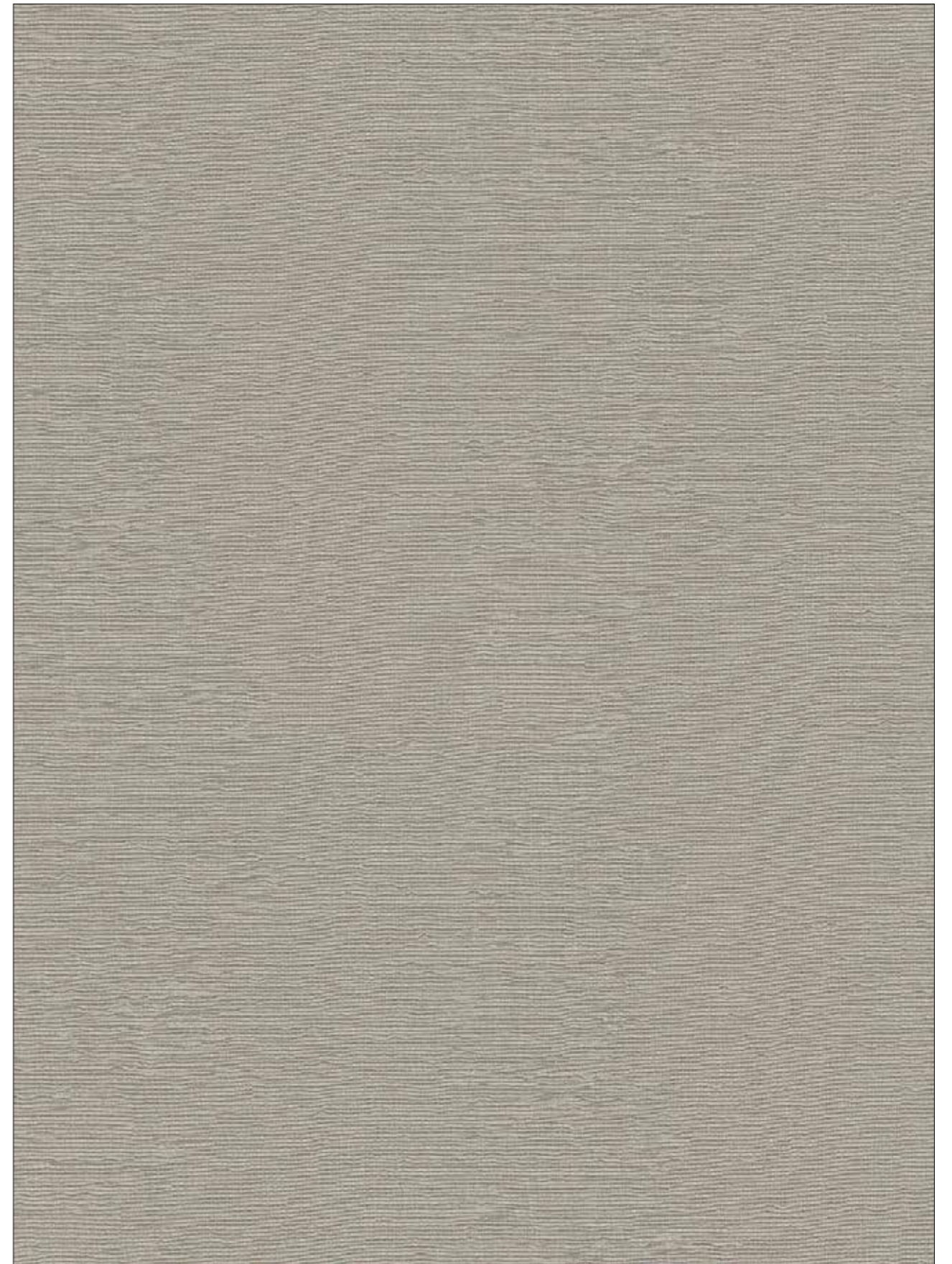
BE2019

Colima and Meru

Organic Collection



BE7008



BE7008

Colima



BE7005



BE7008



BE7020



BE7013



BE7011



BE7014



BE7007



BE7012

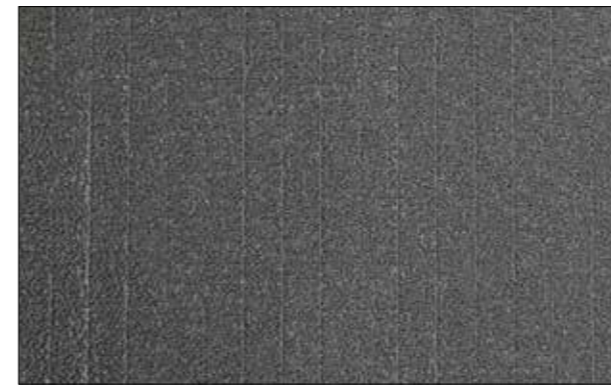
Meru



BH7007



BH7010



BH7017



BH7013

Organic Collection



BH7006



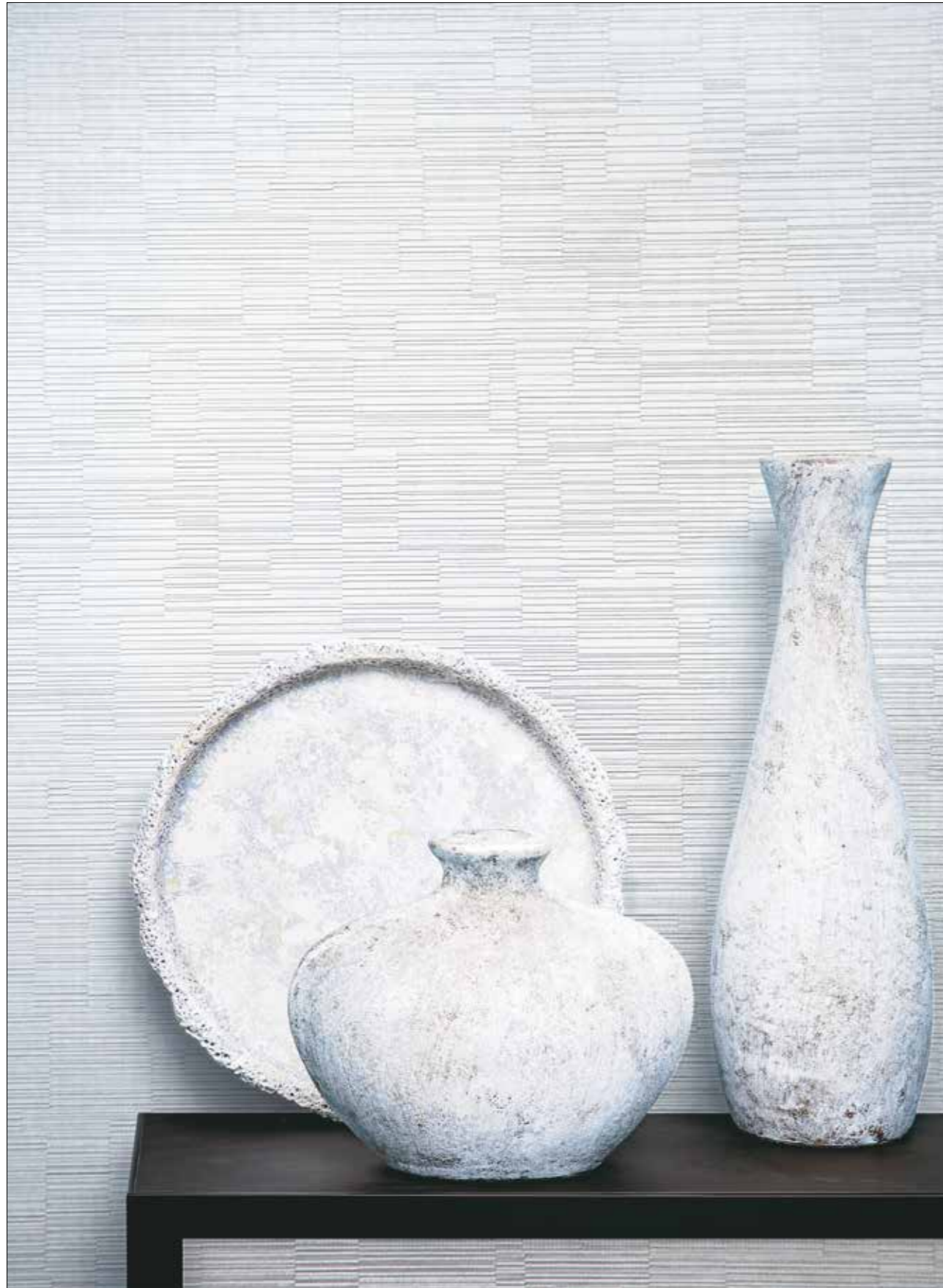
BH7012



BH7018



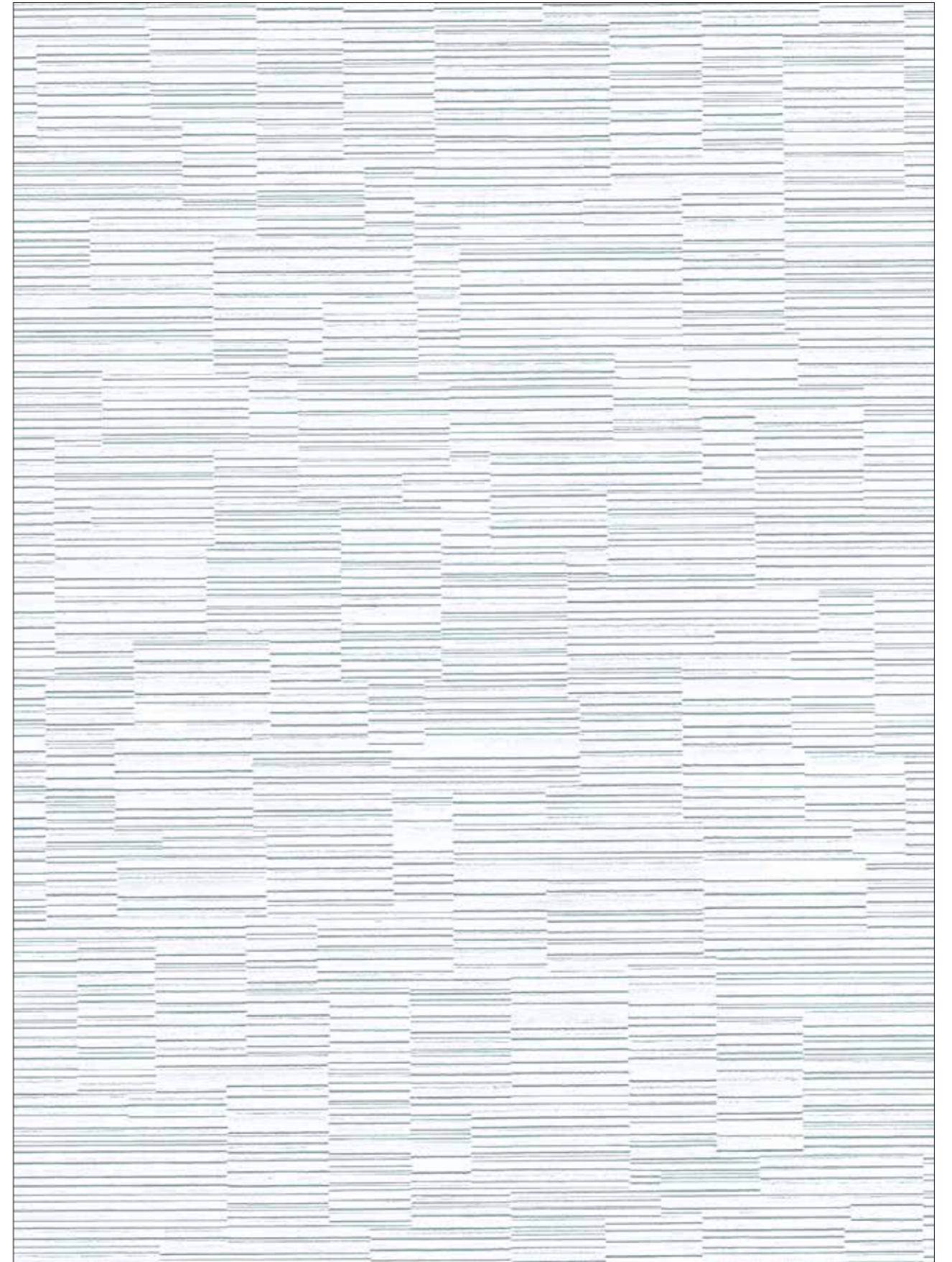
BH7019



BE8003

Vesuvius

Organic Collection



BE8003



BE8003



BE8001



BE8002



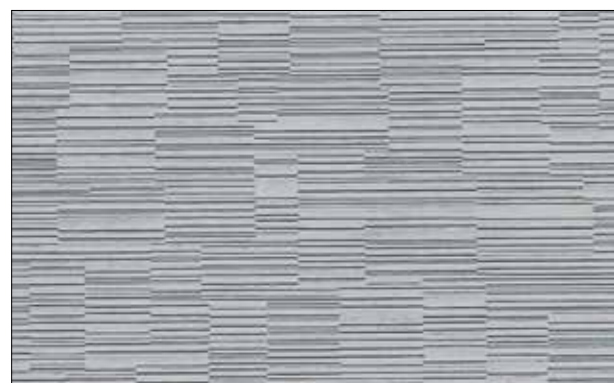
BE8004



BE8005



BE8011



BE8010



BE8008

Vesuvius

Organic Collection



BE8006



BE8007



BE8013



BE8009



BE8015



BE8012



BE8014



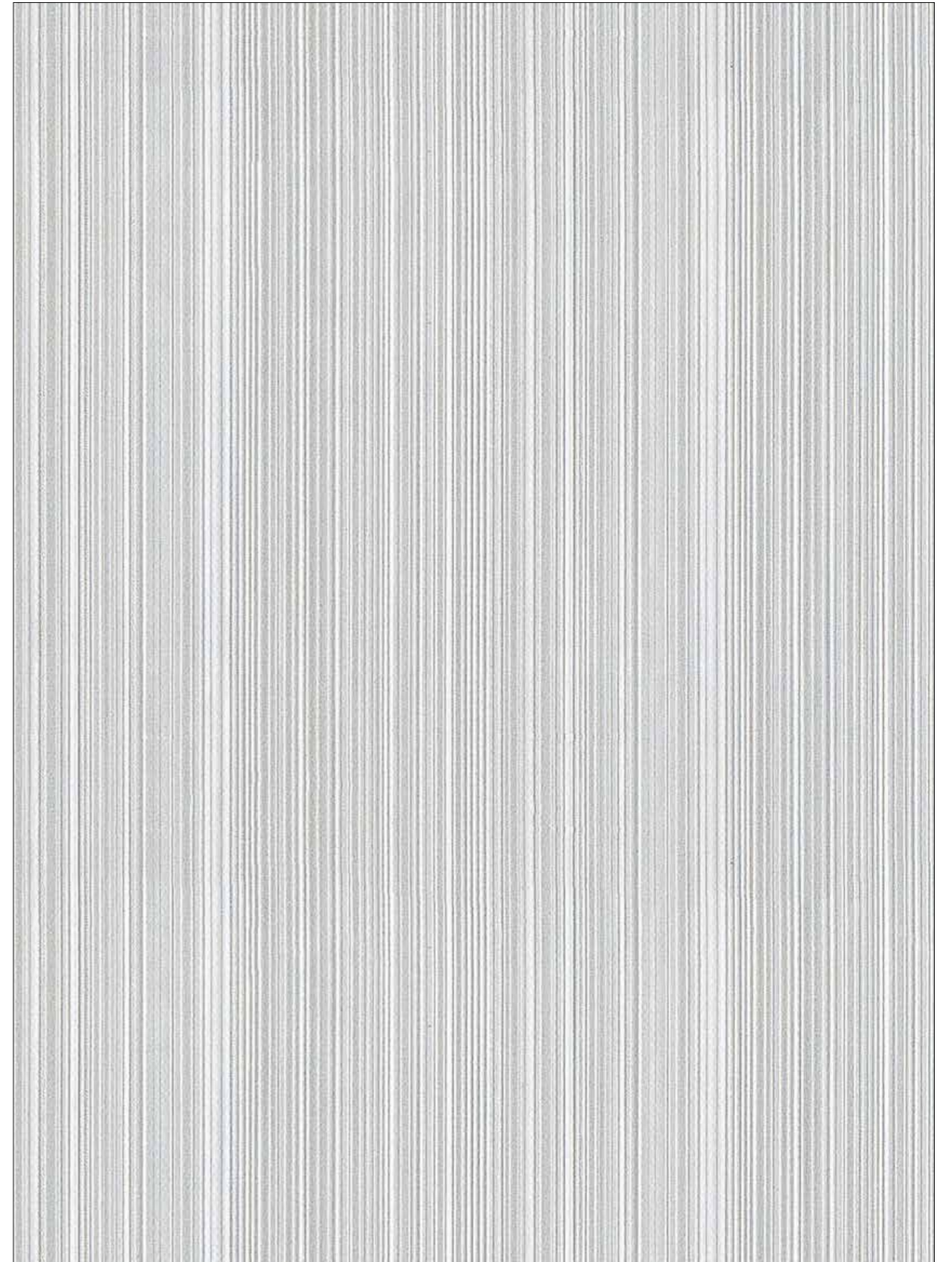
BE8016



BE9001

Katla

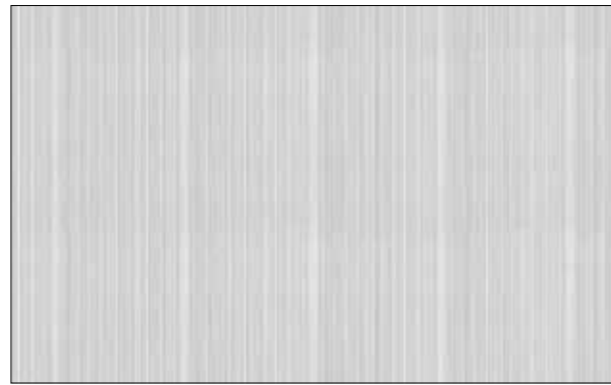
Organic Collection



BE9001



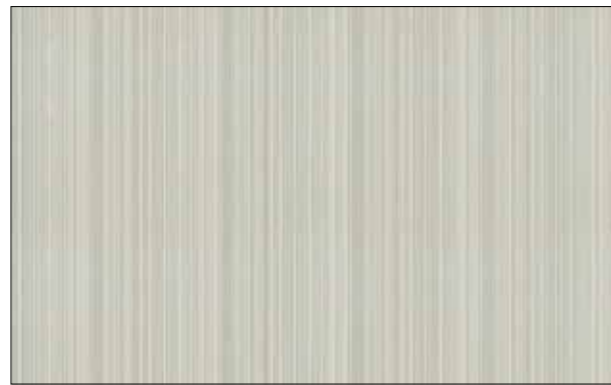
BE9003



BE9001



BE9008



BE9002



BE9007



BE9011



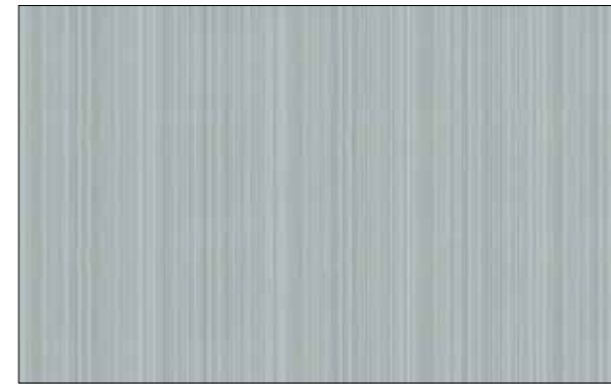
BE9016



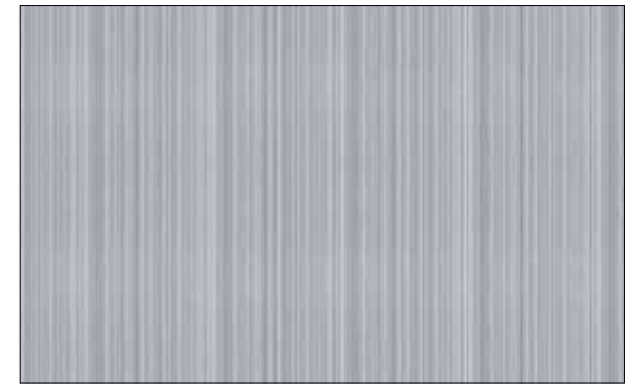
BE9015

Katla

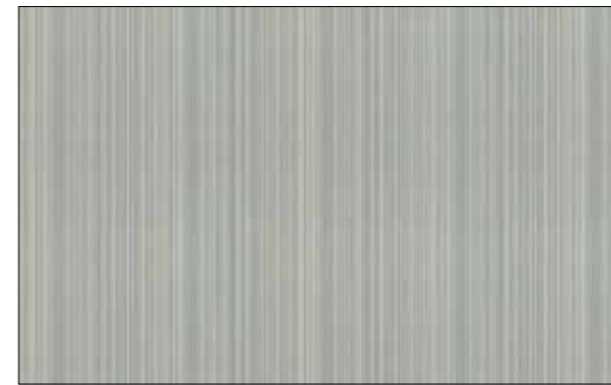
Organic Collection



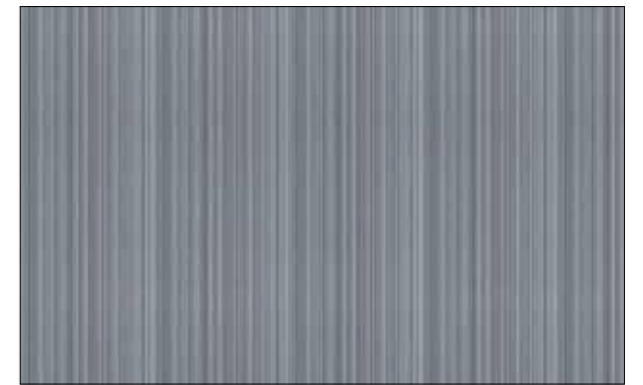
BE9019



BE9005



BE9006



BE9009



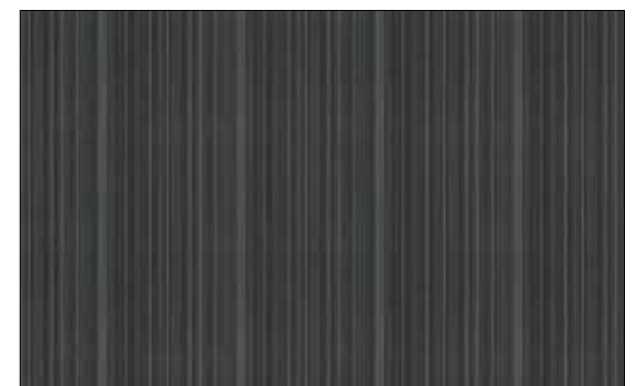
BE9013



BE9014



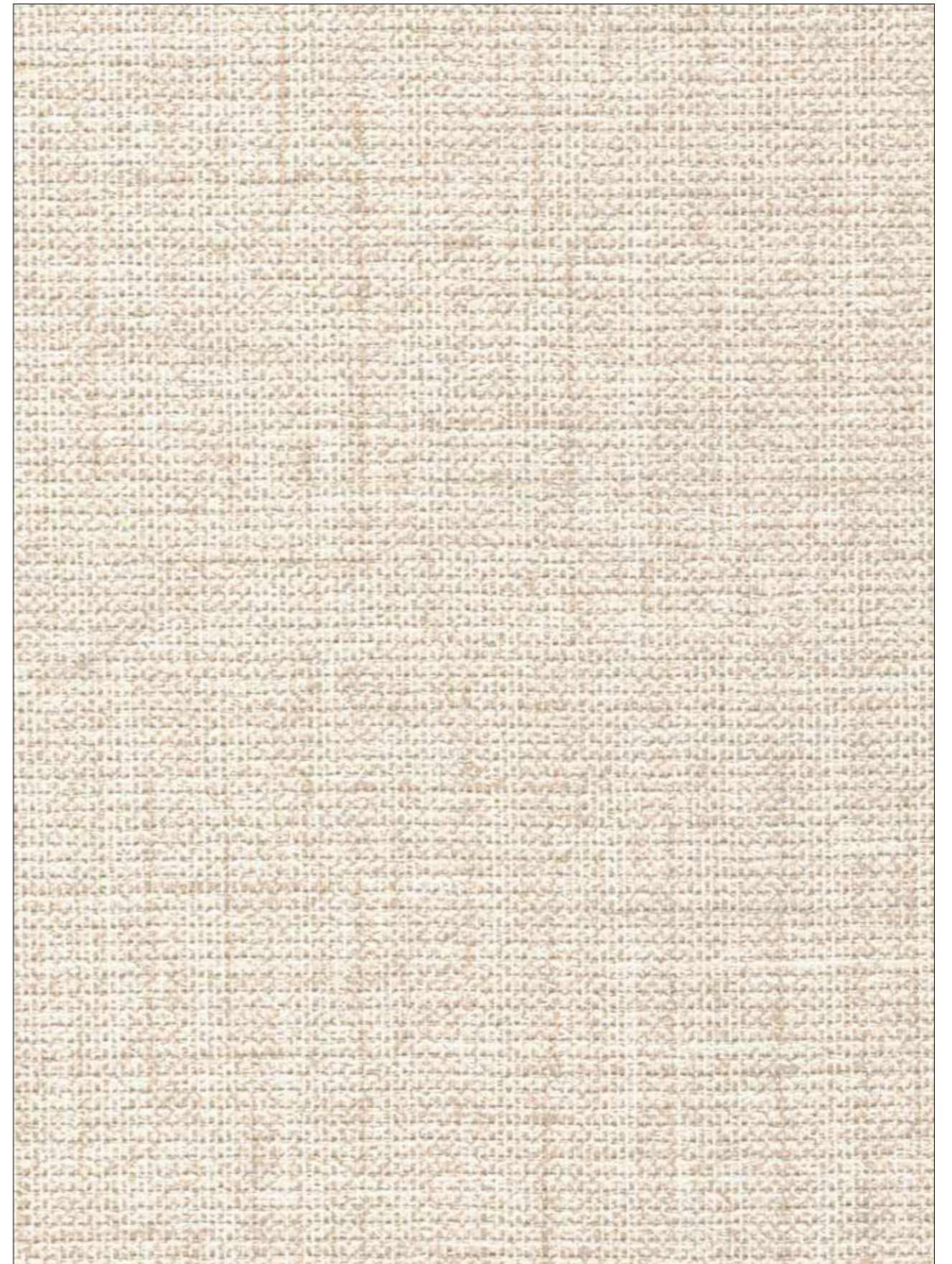
BE9018



BE9017



DC2004

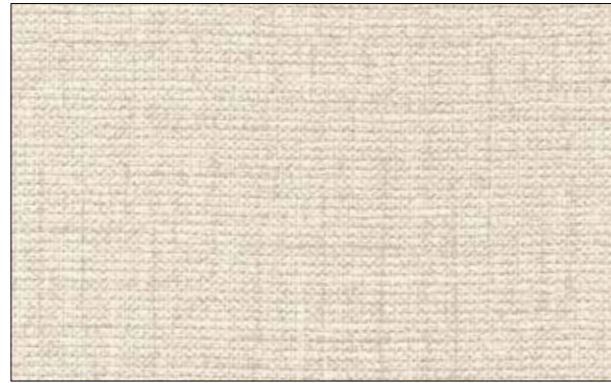


DC2004

Elbrus



DC2001



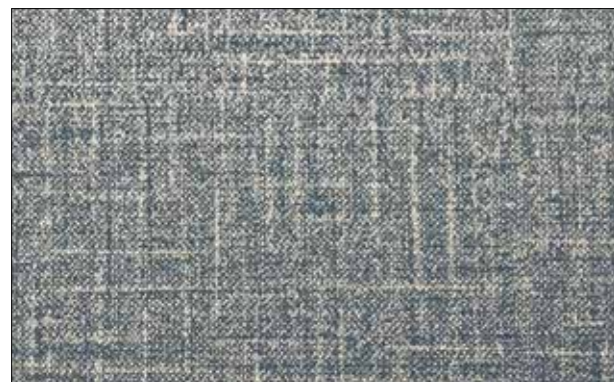
DC2004



DC2006



DC2009



DC2007



DC2003



DC2010



DC2008

Askja



BB1008



BB1003



BB1004



BB1017



BB1005



BB1010



BB1002



BB1016

Organic Collection



BH1008

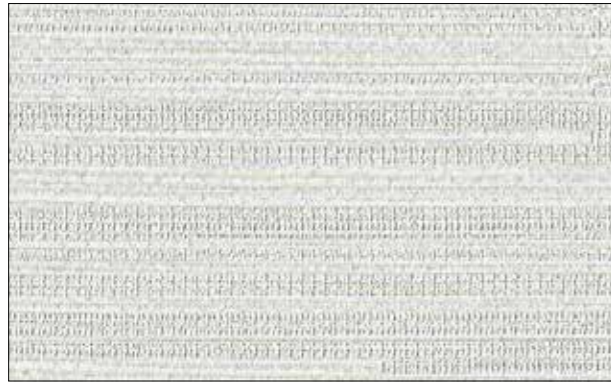
Etna and Apo

Organic Collection

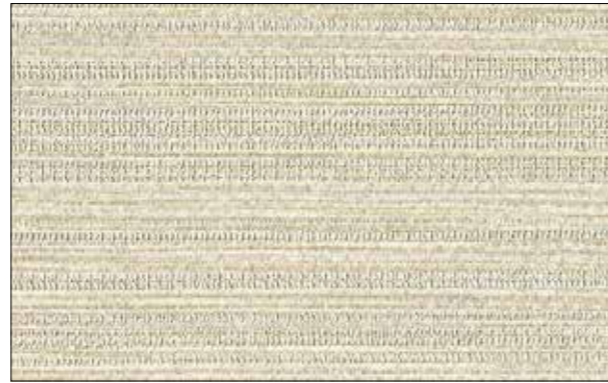


BH1008

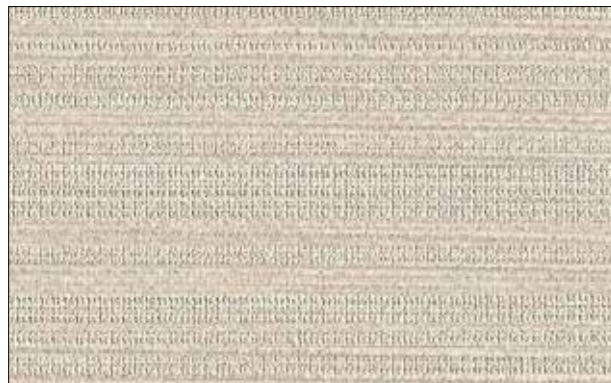
Etna



MWB5001b



MWB5002b



MWB5003b



MWB5004b



MWB5007b



MWB5006b

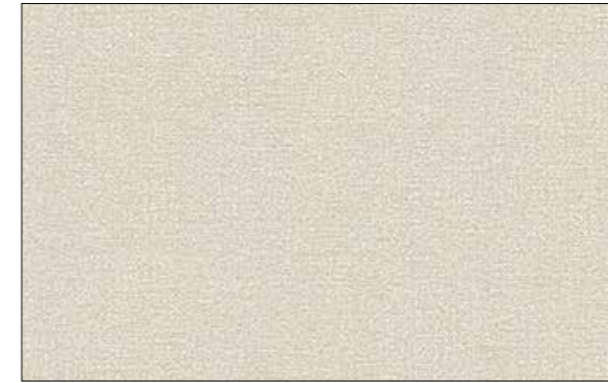


MWB5008b



MWB5010b

Apo



BH1001



BH1003

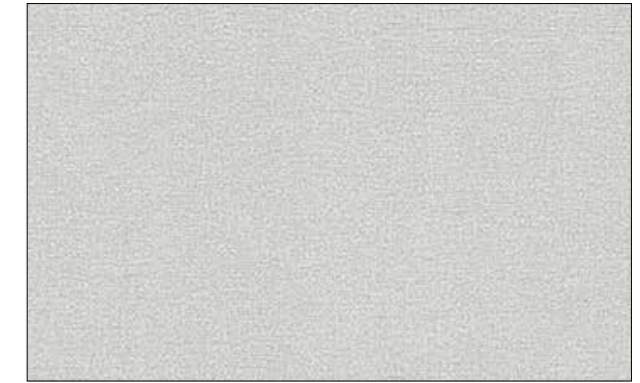


BH1007

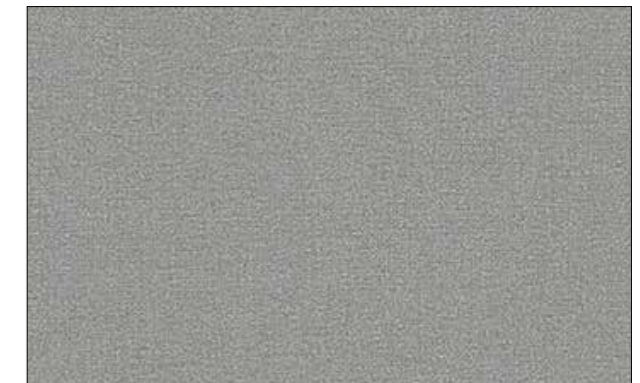


BH1010

Organic Collection



BH1004



BH1005



BH1008



BH1011



TWM21303-7

Fuji and Misti

Organic Collection



TWM21303-7

Fuji



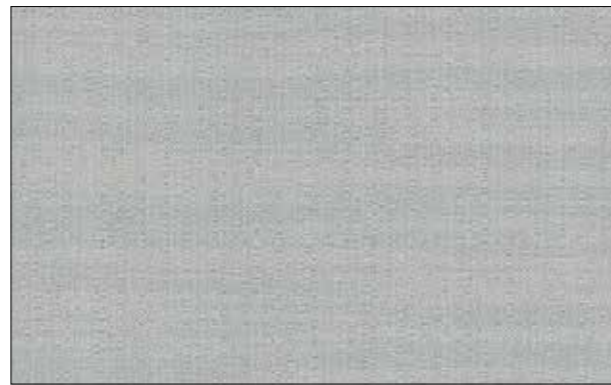
TWM21303-2



TWM21303-6



TWM21303-3



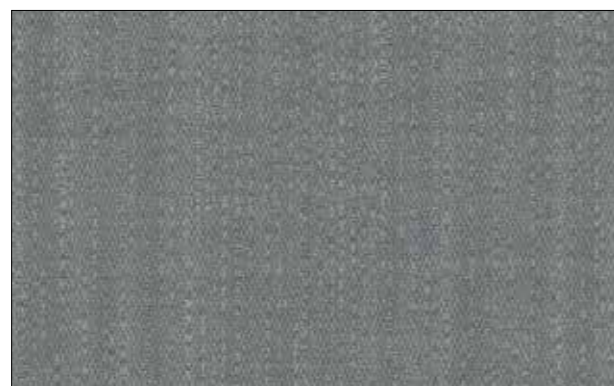
TWM21303-7



TWM21303-4



TWM21303-8



TWM21303-5



TWM21303-1

Misti



TWM21104-2



TWM21104-3



TWM21104-4



TWM21104-5

Organic Collection



TWM21104-1



TWM21104-6



TWM21104-8



TWM21104-9

COMMERCIAL WALLCOVERING SPECIFICATIONS

pattern no.	size/roll	weight	material
MWBa	1.3m*30m	340 g/m ²	Fabric back, vinyl coated
MWBb	1.3m*30m	450 g/m ²	Fabric back, vinyl coated
BE	1.1m*50m	450 g/m ²	Fabric back, vinyl coated
BH	1.1m*50m	340 g/m ²	Fabric back, vinyl coated
DC	1.1m*50m	340 g/m ²	Fabric back, vinyl coated
BB	1.37m*30m	450 g/m ²	Fabric back, vinyl coated
TWM	Fuji: 1.3m*30/50m Misti: 1.1m*30/50m	450 g/m ²	Fabric back, vinyl coated

FIRE RATING

EUROPE STANDARD: EN13501-1 Class B-s1,d0

SMOKE EMISSION: s1

FLAME DROPLETS: d0

USA STANDARD: ASTM E84 Class A

FLAME SPREAD: 10

SMOKE DEVELOPED: 10

ANTI-MICROBIAL FEATURES

STANDARD: GB/T2423.16-2008 Class 0-1

AxPro Concept wallcoverings contain mold resistant additives to resist the growth of mold and mildew under normal conditions. However, wall surface must be clear of mold and no water vapor or moisture infiltration and use only mold-resistant glue and primer while hanging.

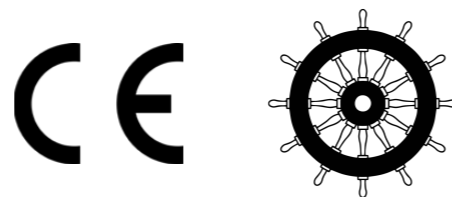
FORMALDEHYDE FREE

WASHABLE, COLORFAST, SCRATCH PROOF

NO HEAVY METALS

LOW VOC

CE CERTIFIED



AXPROCONCEPT

AxPro Concept Sp. z o.o.
58-500 Jelenia Góra, ul. 1 Maja 80/3
tel: +48 795 522 022
info@axproconcept.com
www.axproconcept.com