

HAND
MADE

COLLECTION



AXPROCONCEPT



www.axprocarpets.com

Natural beauty under your feet



Kowary Axpro Carpets is the icon of the European industry and textile designs. For the last 170 years thanks to passion and artistry of generations of our designers, we supply unique floor coverings in technologies: hand tuft, hand knotted, axminster, saxony and carpet tiles. Those products adorn palaces, hotels, cruisers all around the world.

We are proud to present our Handtuft catalogue which shows our unique Handtuft range. Everything your imagination could create can be made on our Handtufted rugs and carpets. Let your mind spread over the horizons. Each Handtuft is an exquisite, artful combination of shapes, patterns, colours and techniques.

Shapes – there is no limit as far as shapes of patterns and rugs are concerned. We are able to provide individual rugs and carpets that will

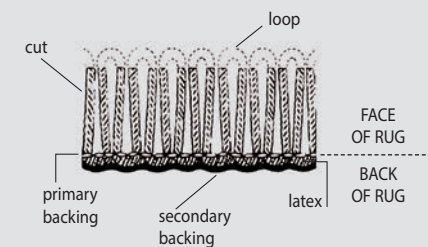
meet your most sophisticated expectations. Patterns – as many as you can imagine with infinite number of colours.

Techniques – luxurious fibers can be contrasted perhaps with stronger, tighter areas or looped pile set against subtle carving and shaping.

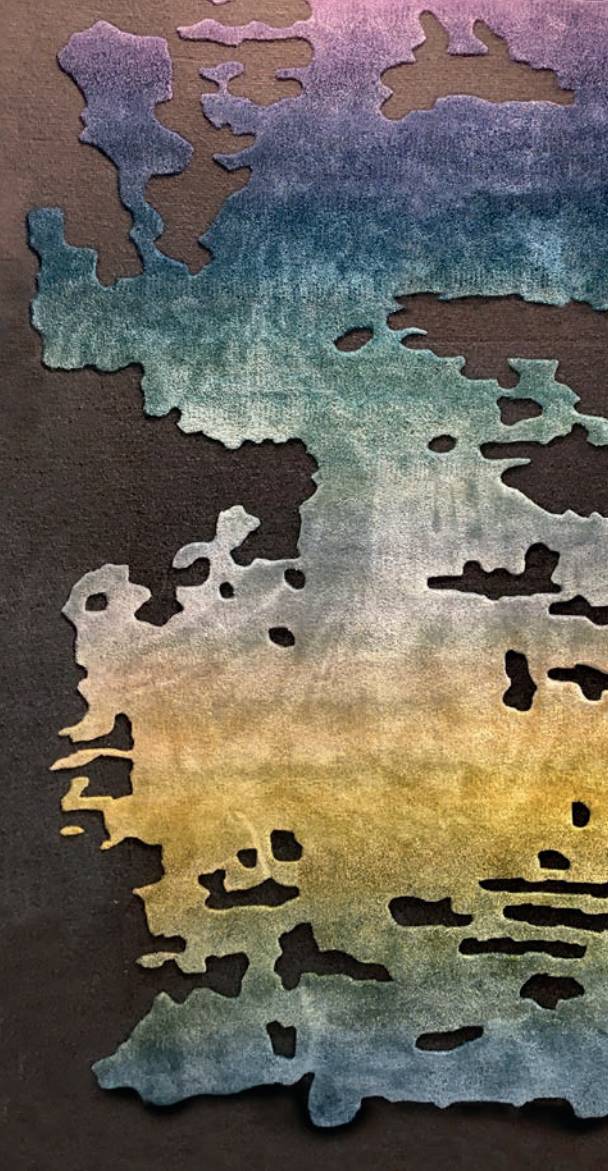
The quality of raw materials meets the highest market demands. We can use several kinds of materials like wool, viscose, pure silk, bamboo silk and others. Our goal is to fulfill your expectations.

TECHNICAL DATA*

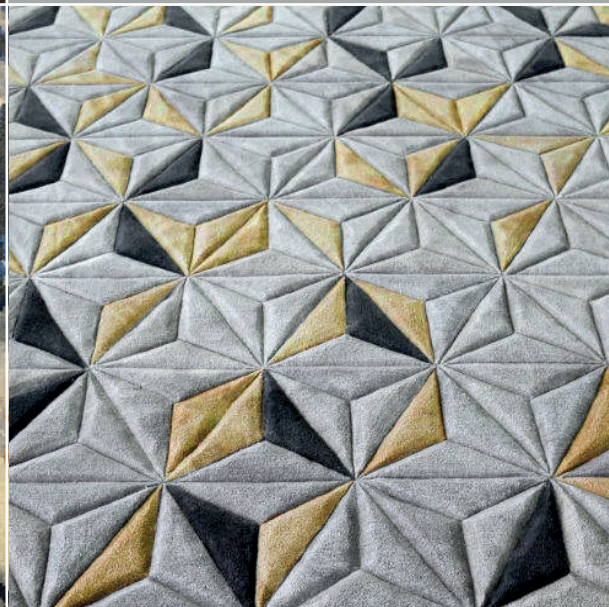
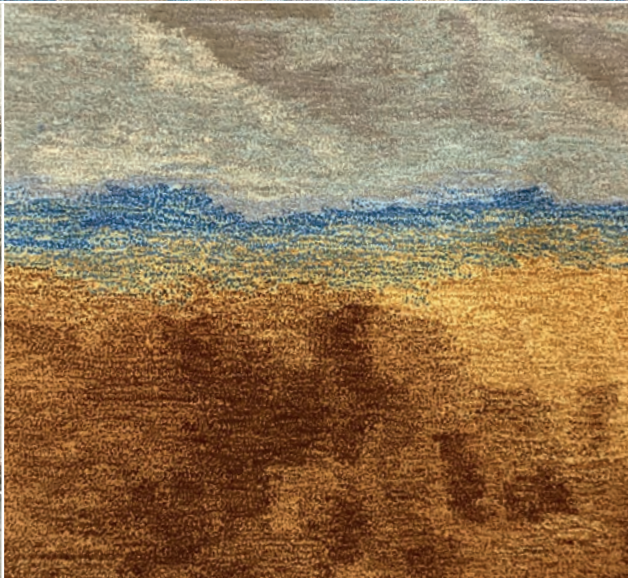
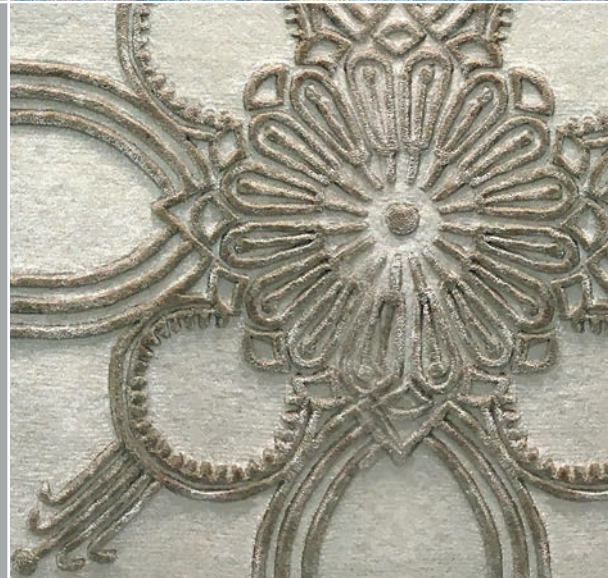
PILE WEIGHT (g/m ²)	2500	3000
pile material	New Zealand Wool	New Zealand Wool
pile height (mm)	10	12
primary backing	cotton	cotton
secondary backing	cotton	cotton



* Standard specification. Bespoke specifications are available.



HAND
TUFT
COLLECTION



Hand Tufted Rugs are made from ready dyed pile by using a hand-operated tool.

An artisan weaves a pattern onto cotton cloth which is stretched on a special frame.






ANGLE
texture



HAND TUFT COLLECTION

HT0001/300 brown

-  146 cut / loop pile
-  229 cut / loop pile
-  491 cut / loop pile



Construction: Cut & Loop








Pile composition: 100% New Zealand wool

Size: 200 x 300 cm





HT0012/402 orange

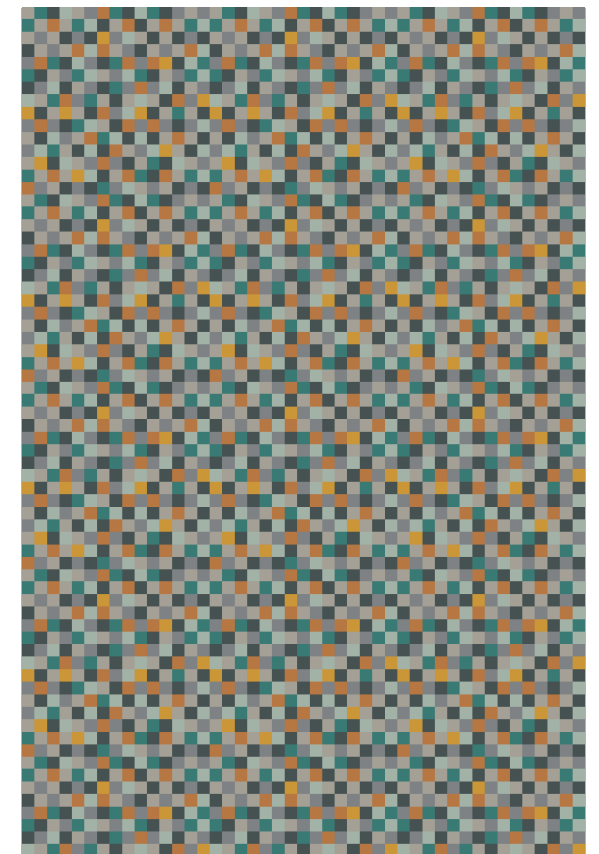
-  **491** cut pile
-  **511** cut pile
-  **466** cut pile
-  **430** cut pile
-  **575** cut pile
-  **576** cut pile
-  **579** cut pile



Construction: Cut pile with V- carving

Pile composition: 100% New Zealand wool

Size: 300 x 450 cm



CHIC
symmetry



HAND TUFT COLLECTION

HT0007/801 grey

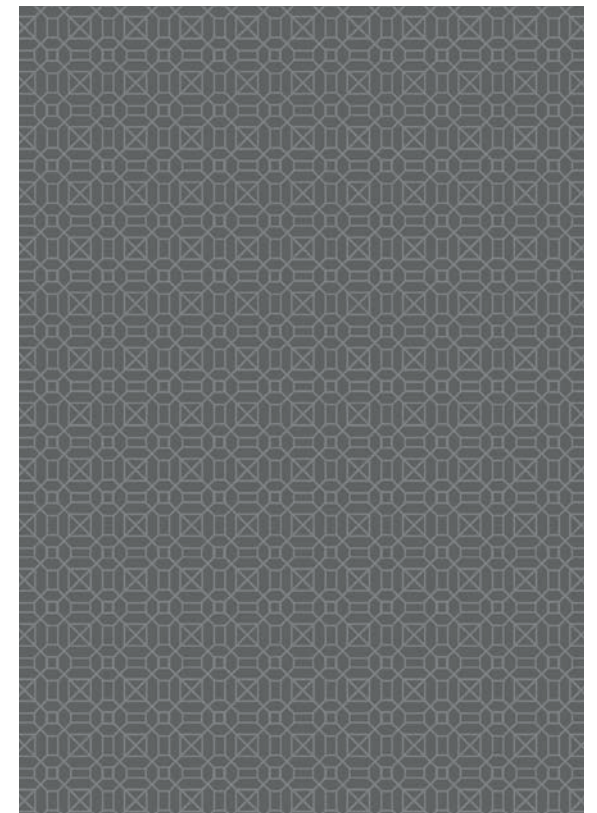
- 539 lower level
- 480 higher level



Construction: Multilevel cut pile

Pile composition: 100% New Zealand wool

Size: 250 x 350 cm



HT0004/801 grey

■ 516 wool / lower level

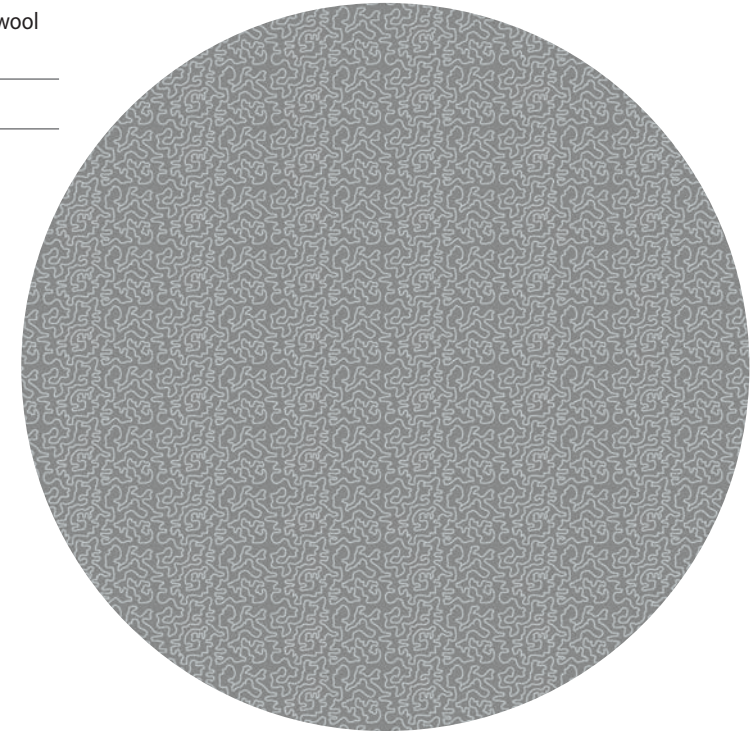
■ 516 viscose / higher level



Construction: Multilevel cut pile

Pile composition: 100% New Zealand wool
& Viscose





Size: 300 x 300 cm



HAND TUFT COLLECTION



HT0013/801 grey





-  **590** wool / lower level
-  **299** wool / lower level
-  **536** wool / lower level
-  **517** viscose / higher level

Construction: Multilevel cut pile

Pile composition: 100% New Zealand wool
& Viscose



HT0014/600 blue

-  **470** wool / lower level
-  **490** wool / lower level
-  **240** wool / lower level
-  **537** viscose / higher level








Construction: Multilevel cut pile

Pile composition: 100% New Zealand wool
& Viscose





HT0015/901 multi

-  491 cut pile
-  185 cut pile
-  549 cut pile
-  386 cut pile
-  563 cut pile
-  582 cut pile
-  578 cut pile

Construction: Cut pile with V-carving

Pile composition: 100% Viscose

Size: 300 x 370 cm



HAND TUFT COLLECTION

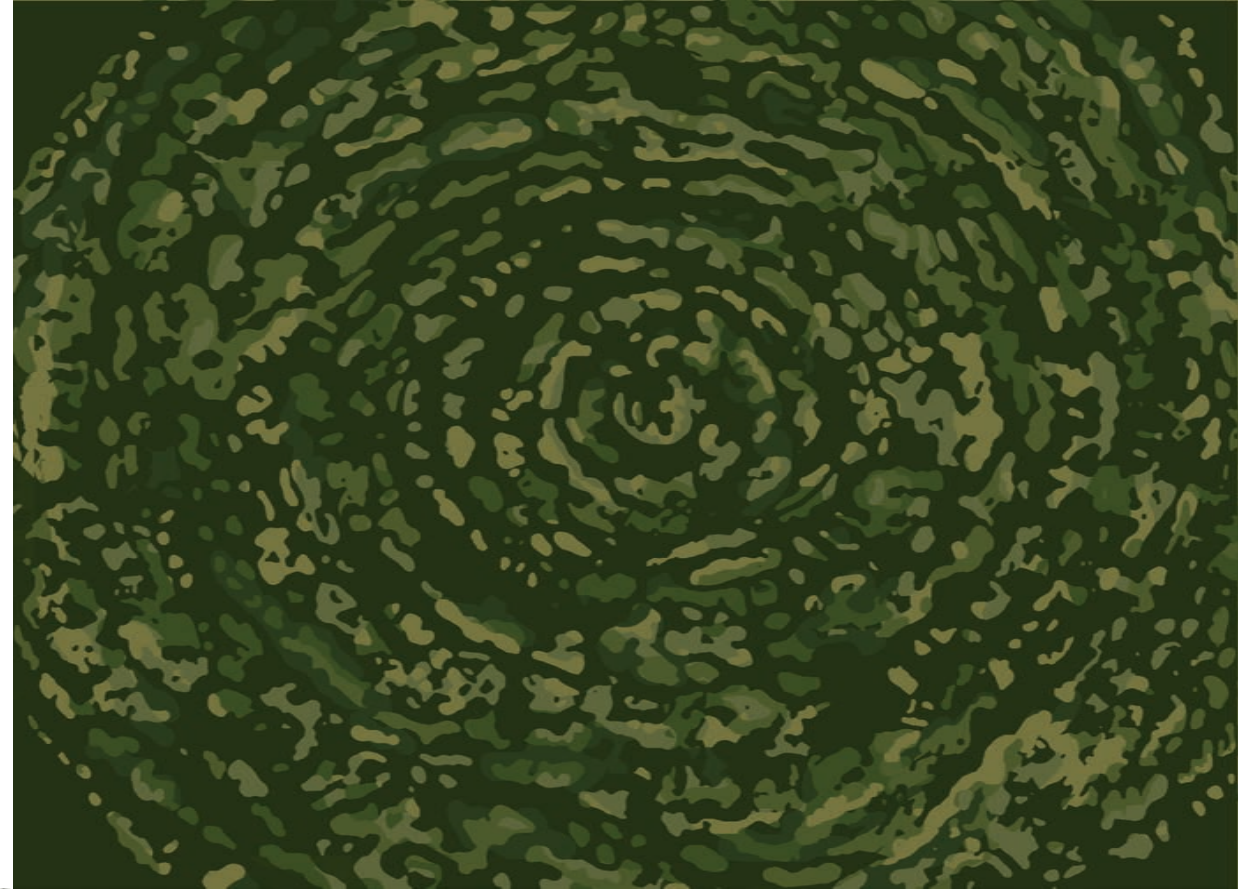


HT0016/801 grey

■ 480 lower / higher level

Construction: Cut pile with carving

Pile composition: 100% Viscose



HT0017/500 green

■ 384 wool	■ 427 wool
■ 364 wool	■ 484 wool
■ 364 viscose	■ 485 wool
■ 345 wool	■ 444 wool




Construction: Multilevel cut pile with carving

Pile composition: 100% New Zealand wool & Viscose





HT0006/600 blue

-  **236** cut / higher level
-  **126** cut / lower level
-  **022** cut / lower level



Construction: Multilevel cut pile
with carving

Pile composition: 100% New Zealand wool

Size: 300 x 400 cm



.com



HAND KNOTTED

COLLECTION

*Pile of those rugs is composed
of knots tied individually
by hands of artisans.*




*This elaborative and time
consuming production process
allows to create very intricate and
unique designs keeping precision
of detail on the highest level.*

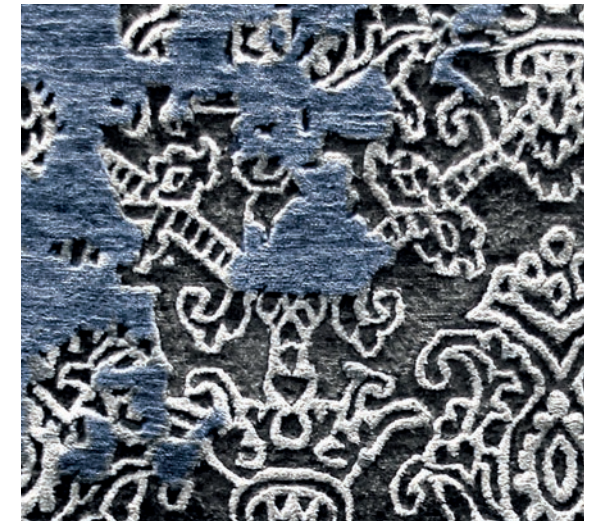
VINTAGE
damask



HAND KNOTTED COLLECTION

HT0009/600 blue

-  **560** wool / lower level
-  **257** viscose / higher level
-  **022** wool / lower level



Construction: Multilevel

Pile composition: 100% New Zealand wool
& Viscose

Size: 200 x 300 cm







COSMIC
gust



HAND KNOTTED COLLECTION

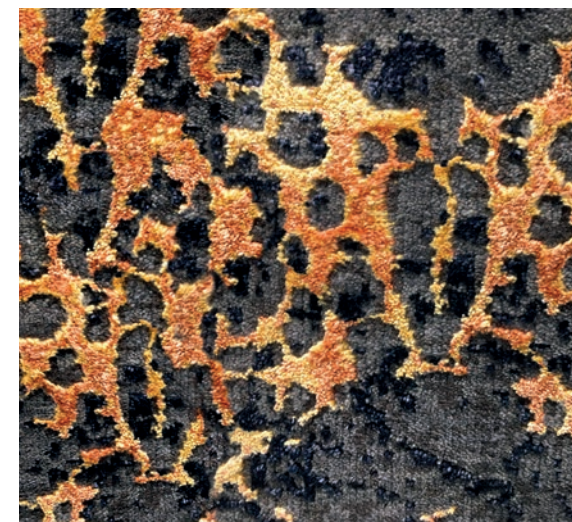
HT0018/402 orange

-  **560** viscose / lower level
-  **557** wool / lower level
-  **480** wool / lower level
-  **338** viscose / higher level

Construction: Multilevel

Pile composition: 100% New Zealand wool
& Viscose

Size: 200 x 260 cm

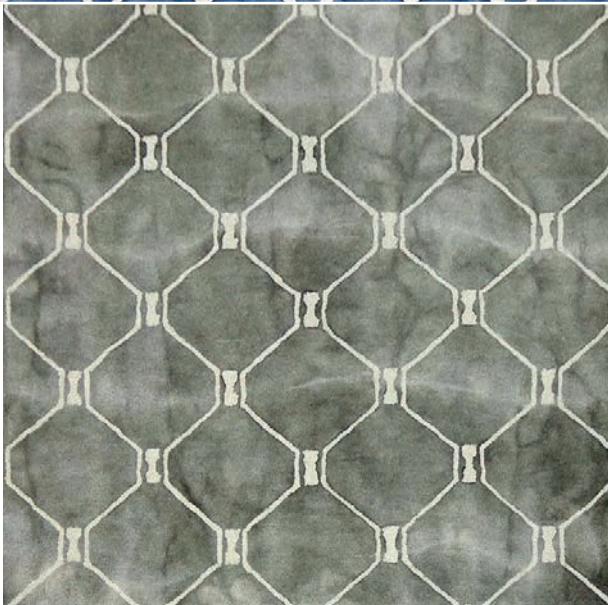


DIP DYE

COLLECTION



Dip Dye is an innovative dying method allowing to achieve an original effect of hand-painted watercolour. Every rug has its unique look.



RUSTY
beehive



DIP DYE COLLECTION

HT0019/302 rust

-  001
-  248 dip dye



Construction: Cut pile / dip dye

Pile composition: 100% New Zealand wool

Runner width: 150 cm





KOWARY
1854

AXPROCONCEPT

AxPro Concept Sp. z o.o.
ul. 1 Maja 80, 58-500 Jelenia Góra, Poland
tel. +48 795 522 022
info@axproconcept.com
axproconcept.com