



CONCEPT ID

COLLECTION



AXPR©ONCEPT



AXPROCONCEPT

Our main target is to create
and further inspire leaving new space
with its own interior concept identity.

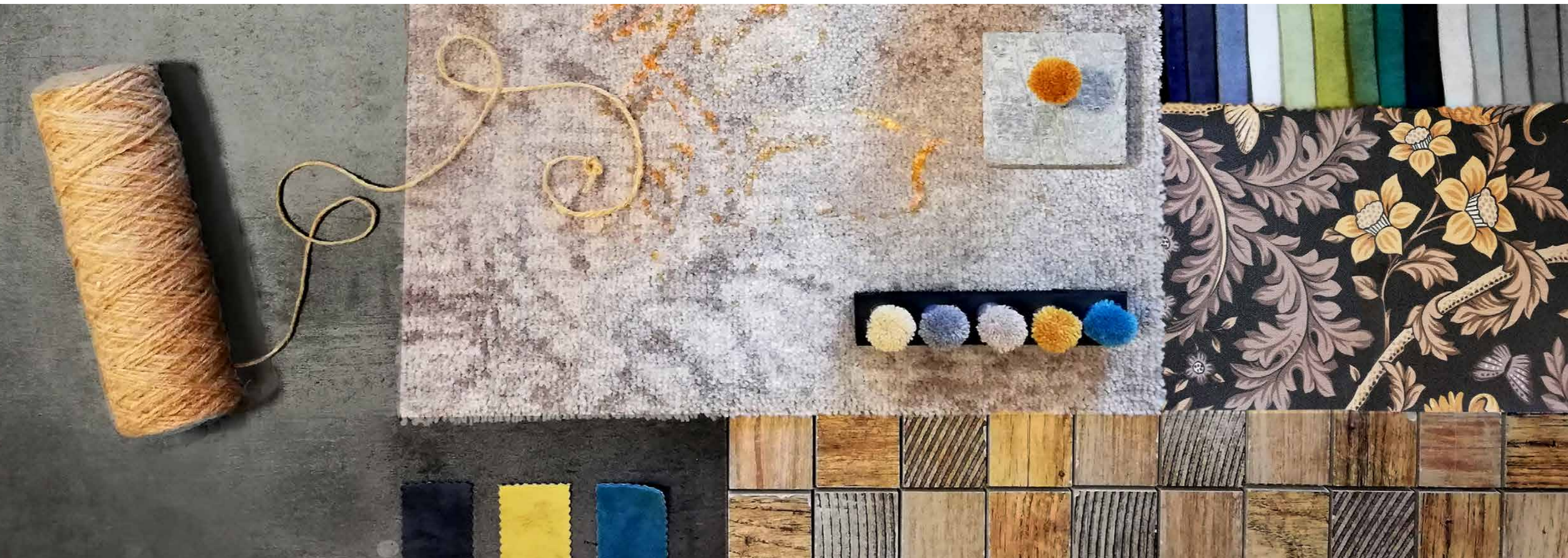
CONCEPT ID collection

Kowary/ Axpro Carpets is a leading design trend-setter and supplier of hospitality and marine floor coverings such as: Axminster carpet, Saxony tufted-printed carpets, Hand-tufted carpets and rugs, carpet tiles etc.

The new approach of Kowary/Axpro Carpets is to combine all decorative elements of the various components of interiors.

For this reason our designers develop complete interior concepts which include not only floor coverings but also: wallpapers, textile decoration- including window decoration and bed decoration as well as upholstery.

We propose finest solutions for all types of areas always considering the function of the interior, design directives and inspiration.





2

3

1

7

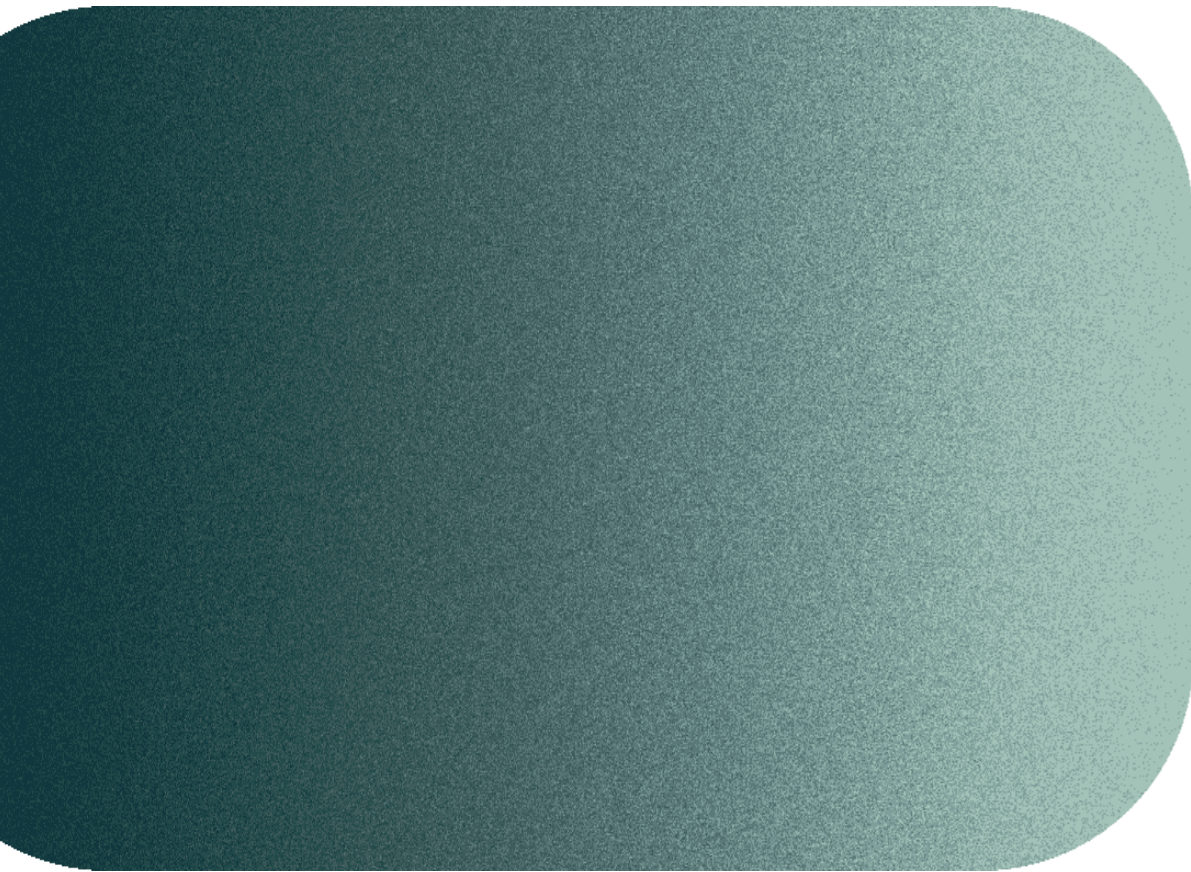
6

5

4

*Brass
and Jade*

Brass and Jade



1. RUG
HAND TUFTED

6530/500



5. UPHOLSTERY

MOKKA
8802



7. CUSHIONS

VELUTTO
11 Blue

6. CUSHIONS

STELLA
Blue - beige

2. WALLPAPER

SCARLATTI
550701



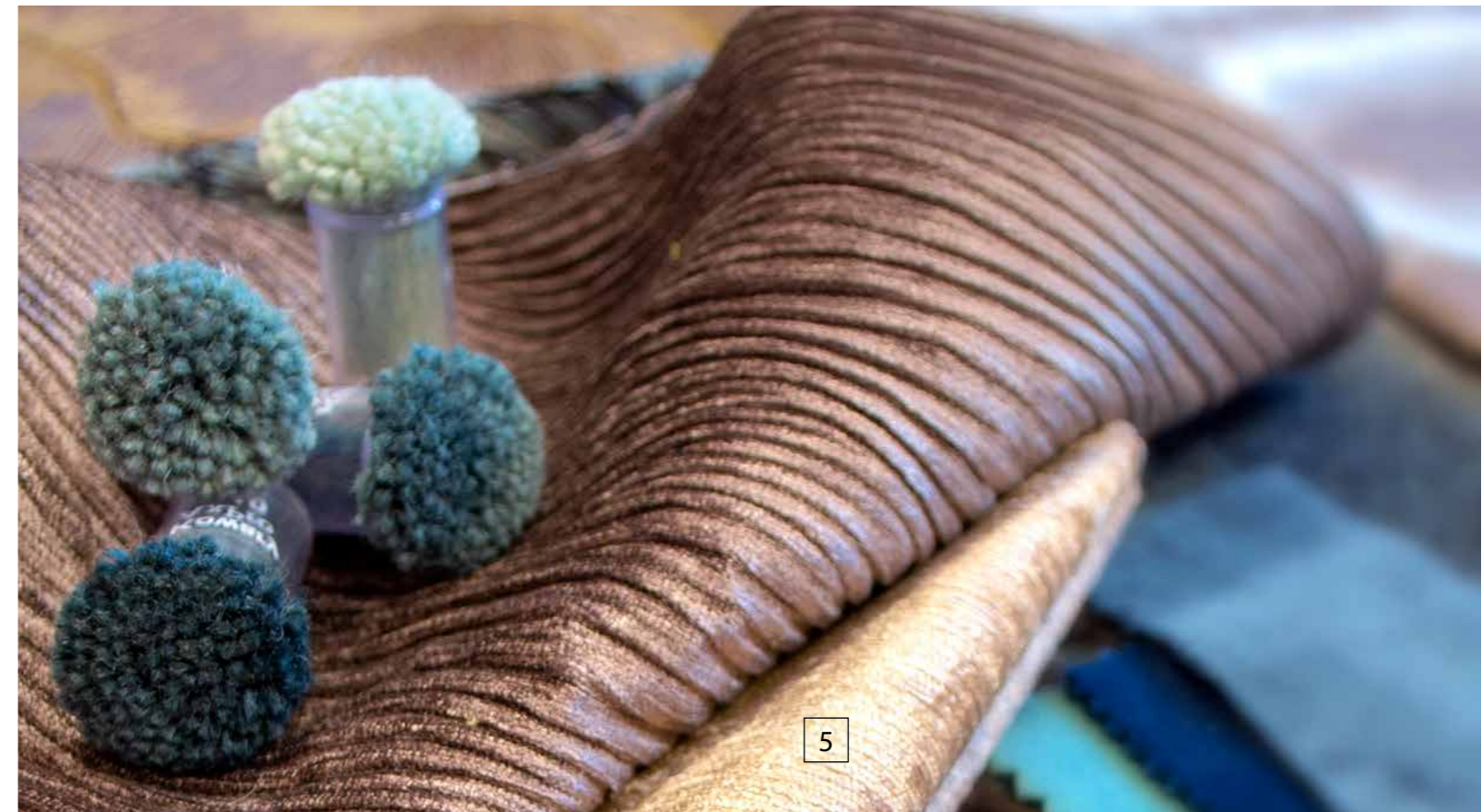
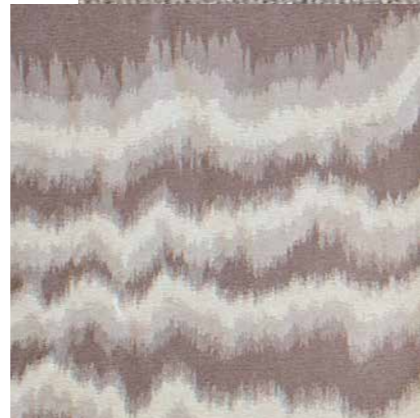
3. CUTRAINS

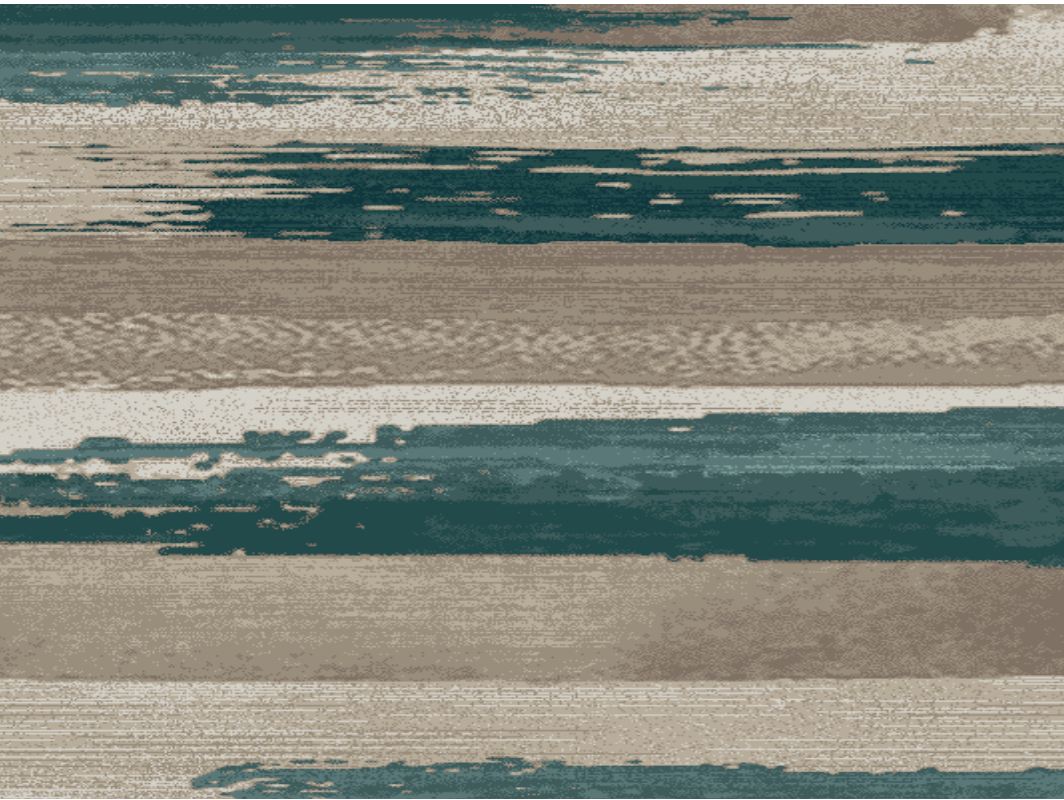
DIM OUT
Ashur 16 sand



4. CUTRAINS

BLACK OUT
ROMO Taupe





CORRIDOR

axminster carpet
6531/500

- D09
- D10
- D11
- D12
- M19
- R04
- S03
- S02
- K02



ROOM

axminster carpet
6532/300

- D09
- D10
- D11
- D12
- M19
- R04
- S03
- S02
- K02





8

9

10



14

13



15

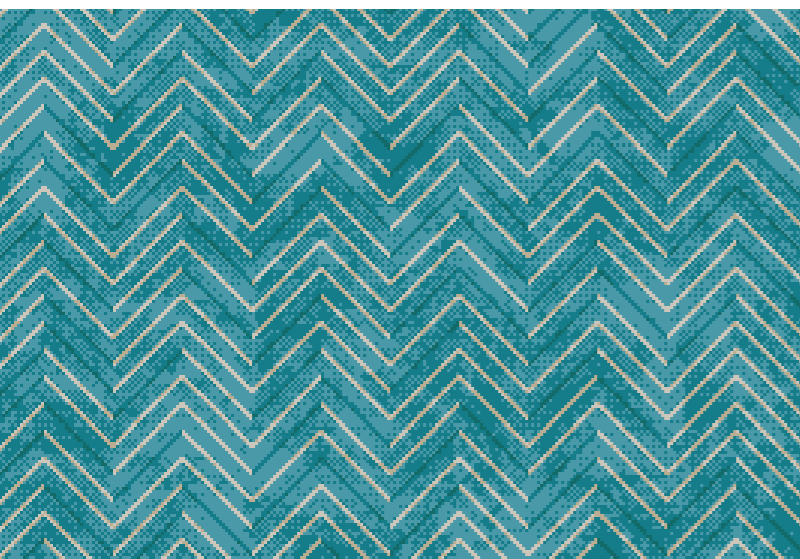
Turquoise and Copper

Turquoise and Copper



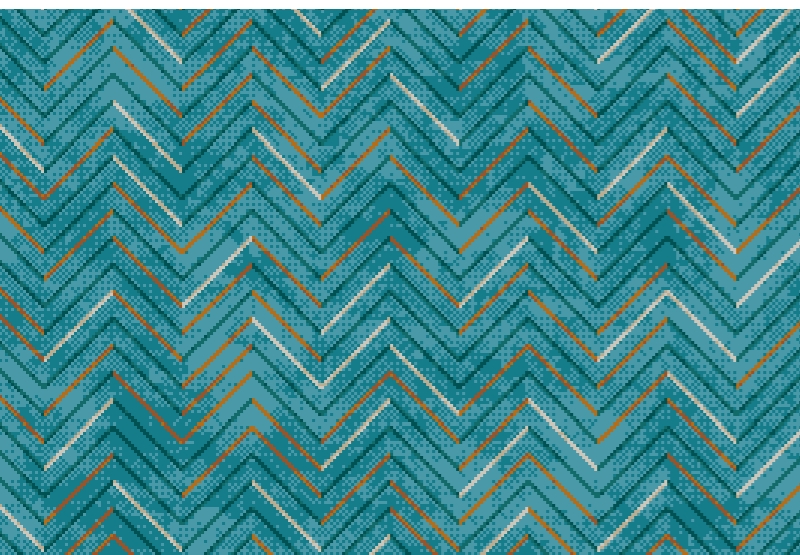
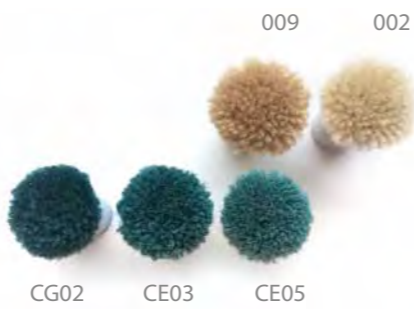
8. AXMINSTER
CARPET

6532/001



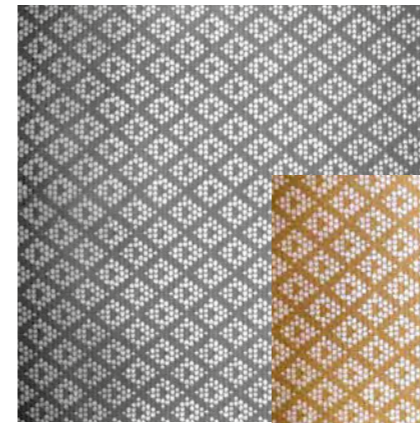
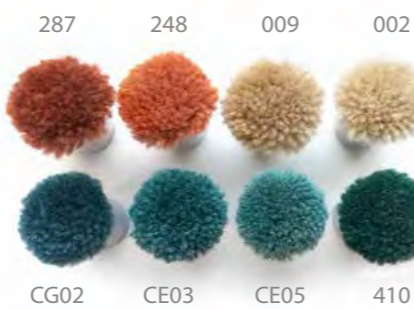
9. AXMINSTER
CARPET

6533/502



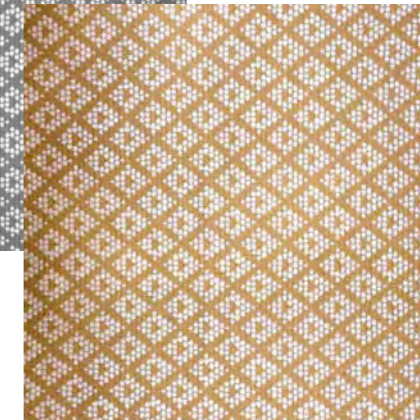
10. AXMINSTER
CARPET

6534/502



12. CUSHION

DIM OUT
Bond Ebony



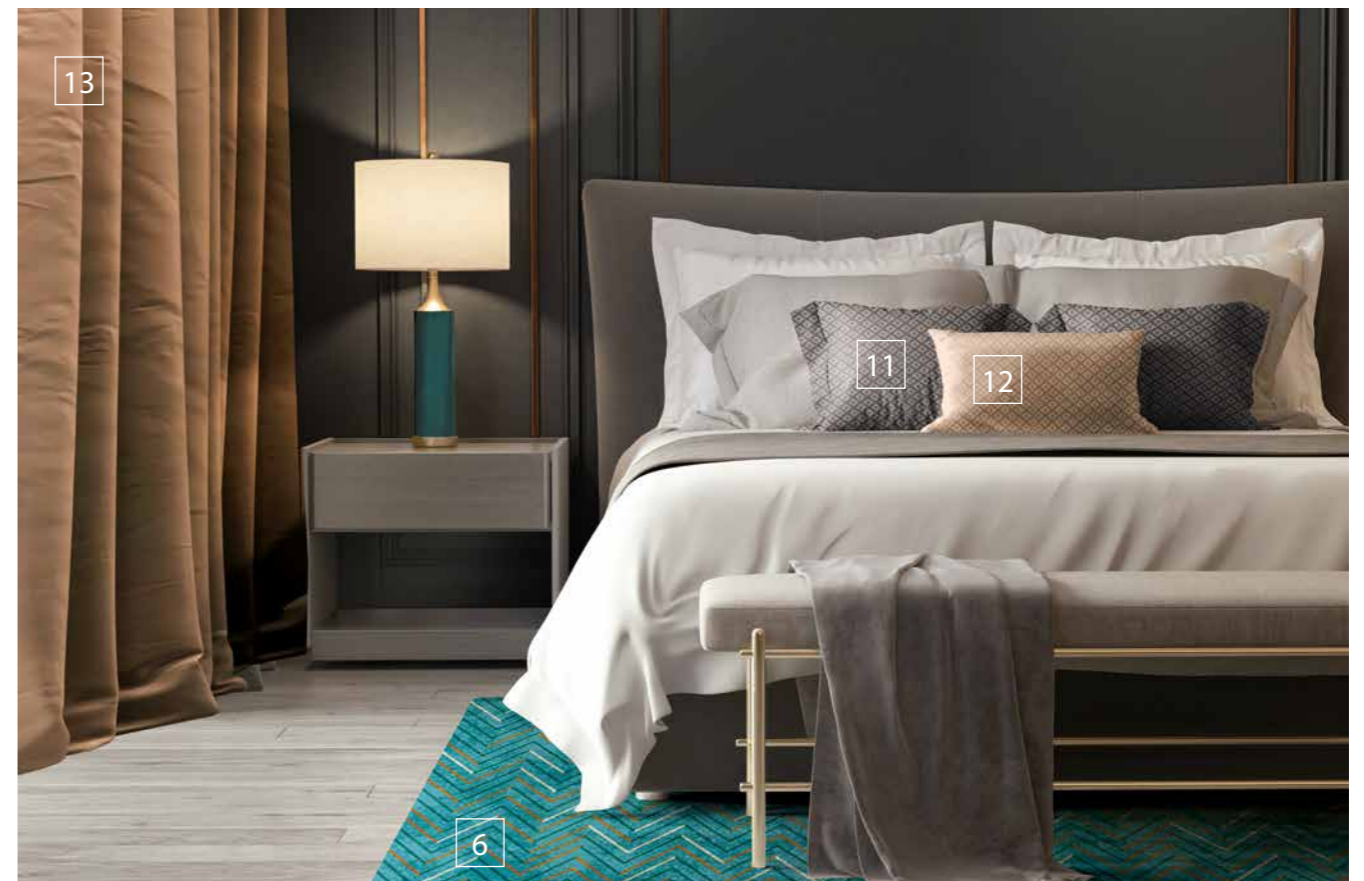
11. CUSHION

DIM OUT
Bond Biscuit



13. CURTAIN

Black out
Honey 2020

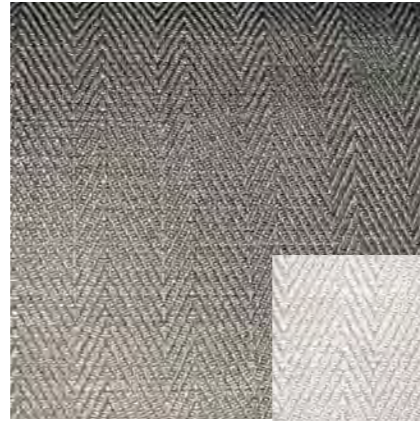


Turquoise and Copper



14. PVC TILE

VINTAGE ZINC BLACK
ID Inspirations 55-70



15. CURTAINS

ATIEN DIM OUT
Adiya 03 graffin



CURTAINS

ATIEN DIM OUT
Adiya 06 feather



16. AXMINSTER
CARPET

6535/801



Sapphire and Sand



Sapphire and Sand



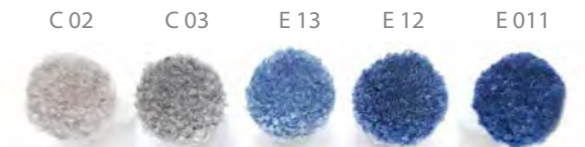
20. WALLPAPER

AXPRO 3000

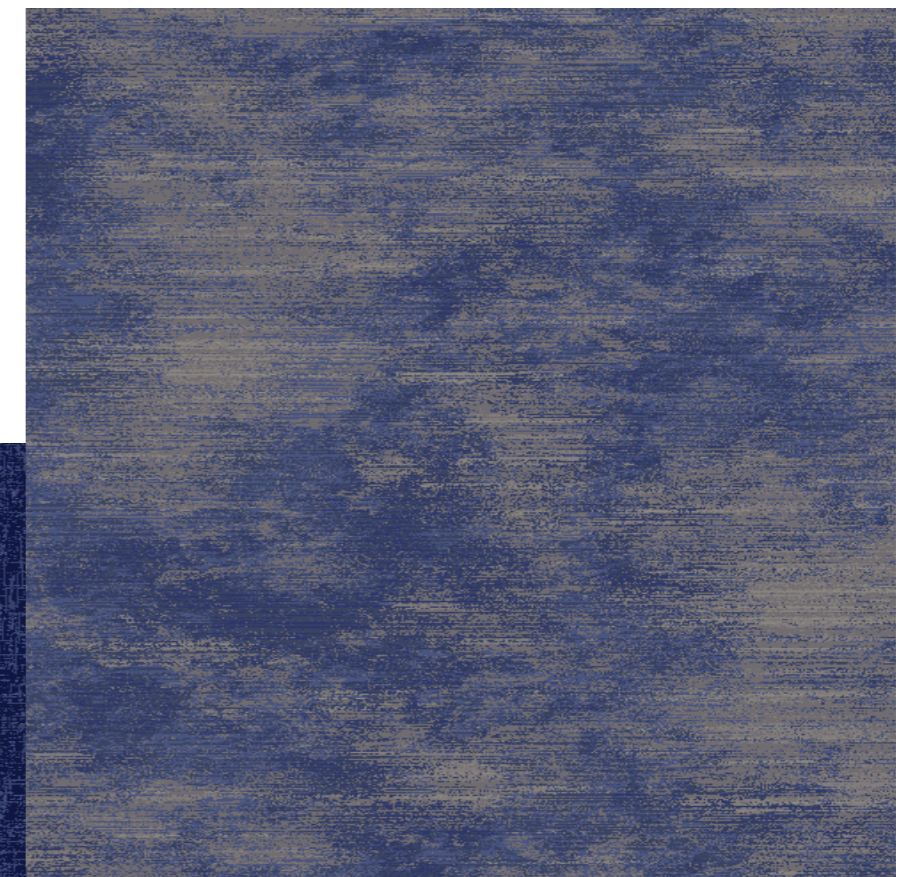


18. CUSHION

Silver blue

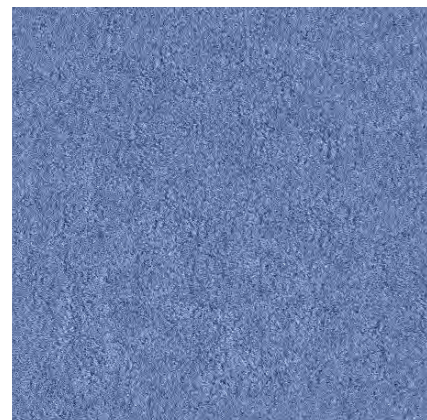


E 10 E 11 E 12



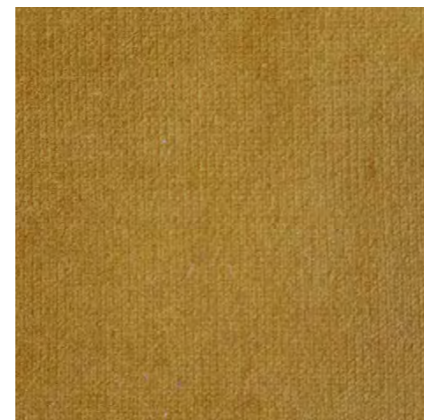
21. AXMINSTER CARPET

6536/600



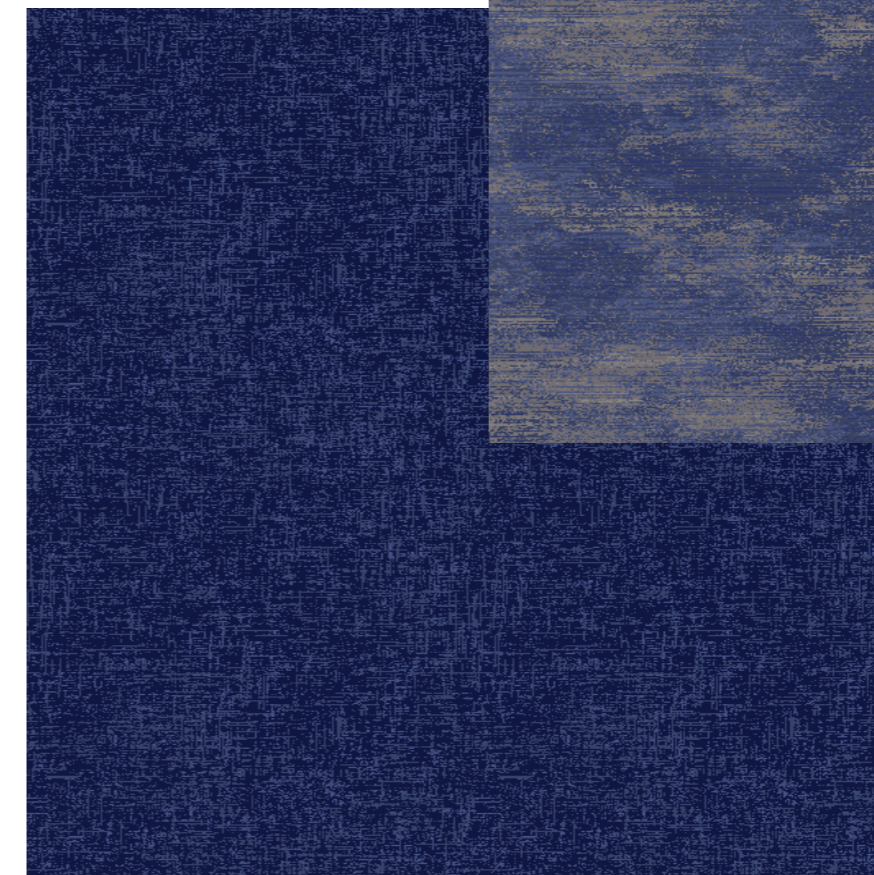
19. UPHOLSTERY

BARBA SKY 014



17. CUSHIONS

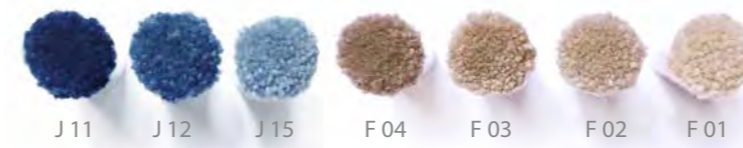
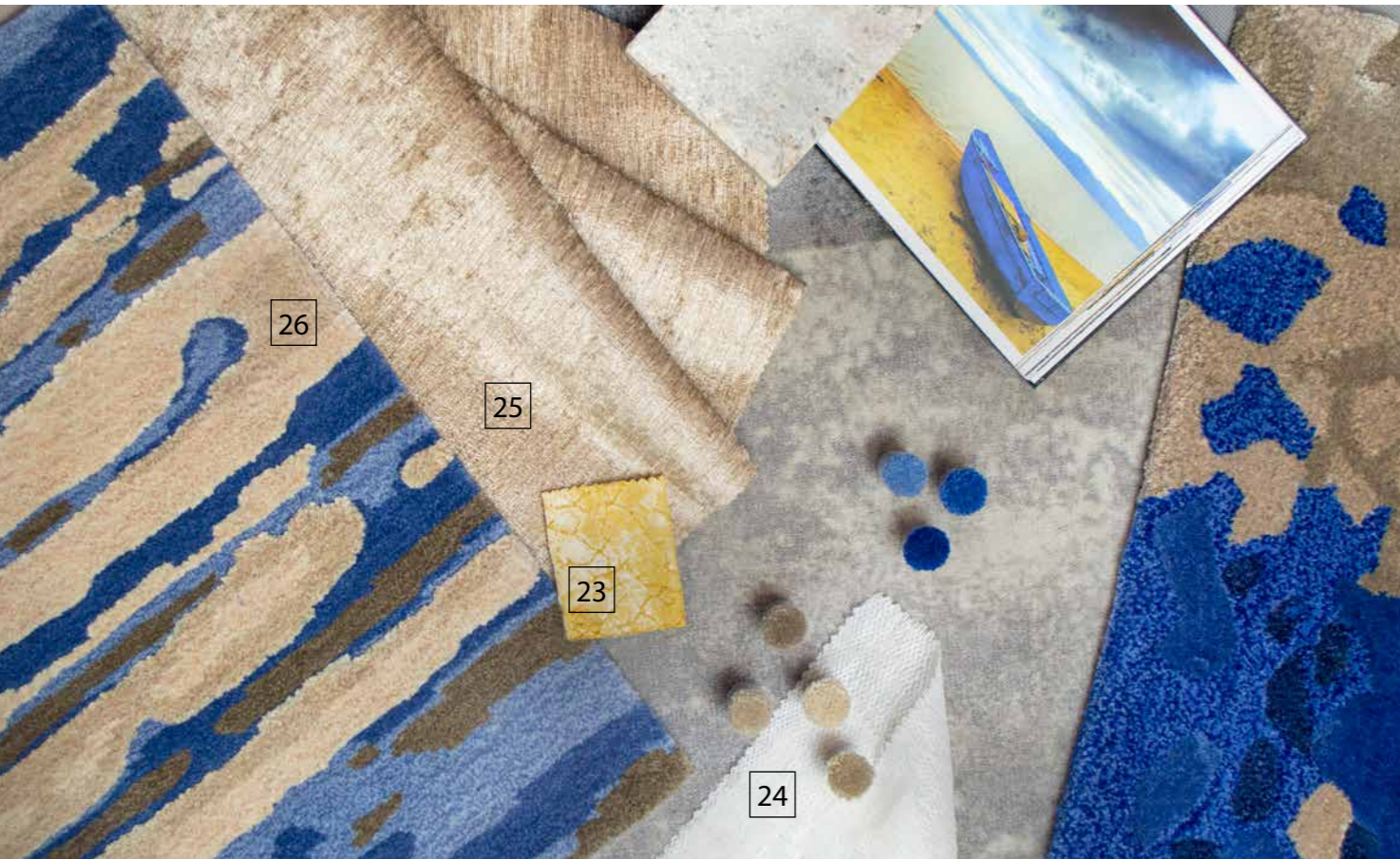
VELUTTO
11 Blue



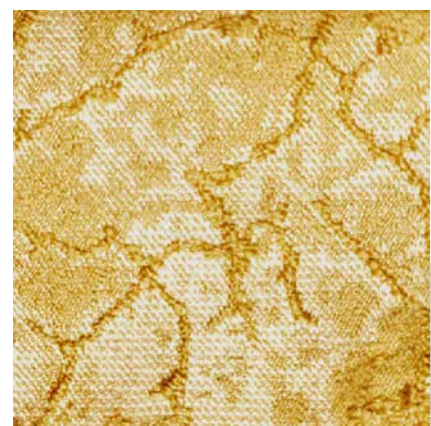
22. AXMINSTER CARPET

6537/600

Sapphire and Sand

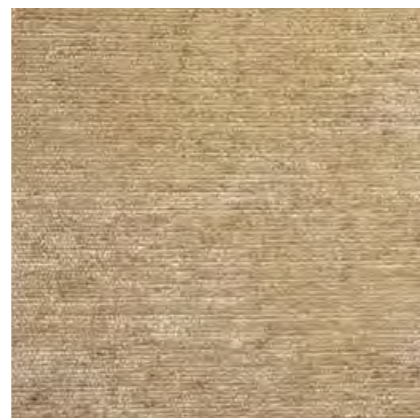


26. RUG
HAND TUFTED
6538/600



23. CUSHIONS
←
OLD GOLD

25. CUTRAINS &
BED COVERING
BLACK OUT
MOKKA 8802



24. VEIL
→
ETAMINA 2670
C. 01





26

27

*Onyx
and Gold*

28

29

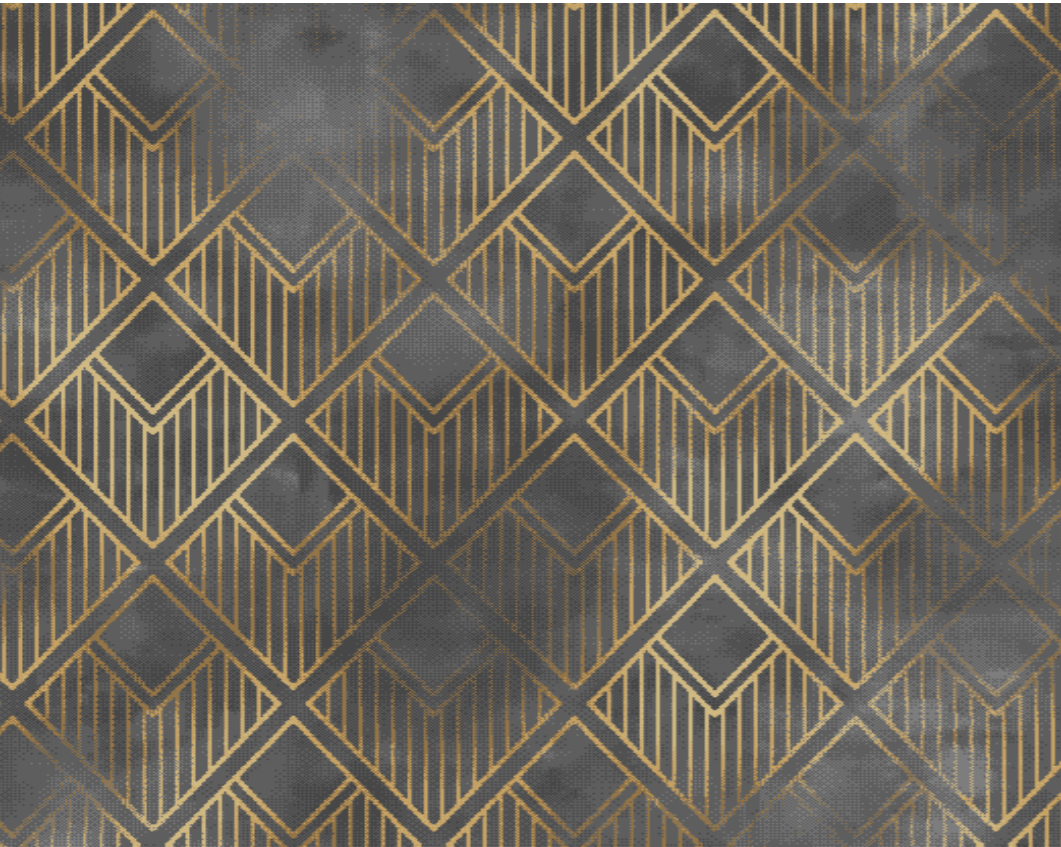
30

31

32

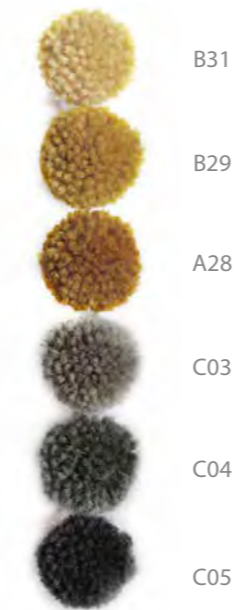
28

Onyx and Gold



26. AXMINSTER CARPET

6539/809



31. CUSHIONS

GROSVENOR TARRAGON 7762



32. CUSHIONS

BURLINGTON TARRAGON 7764



28. UPHOLSTERY

VELLUTO Mustard

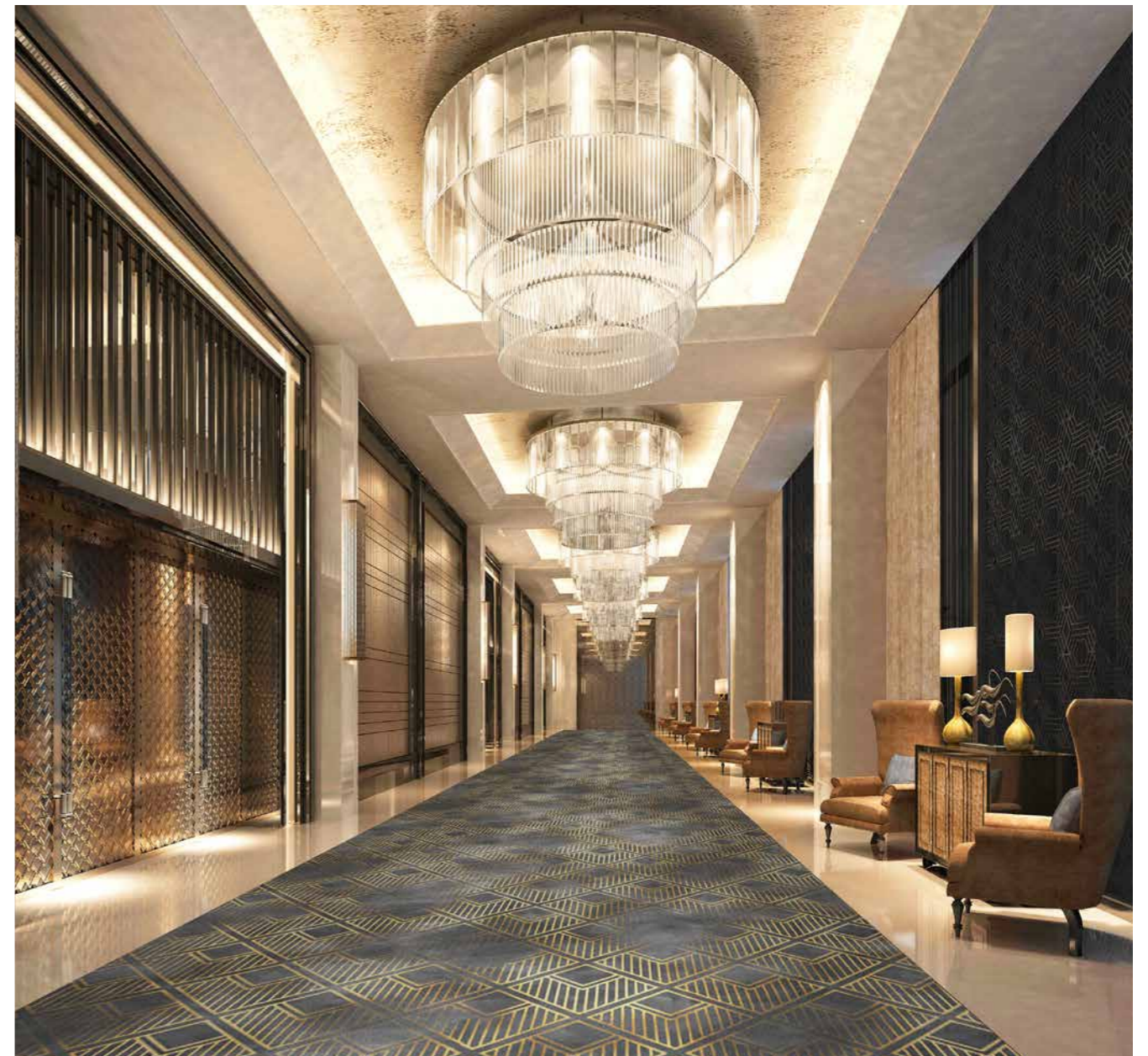


27. CURTAINS

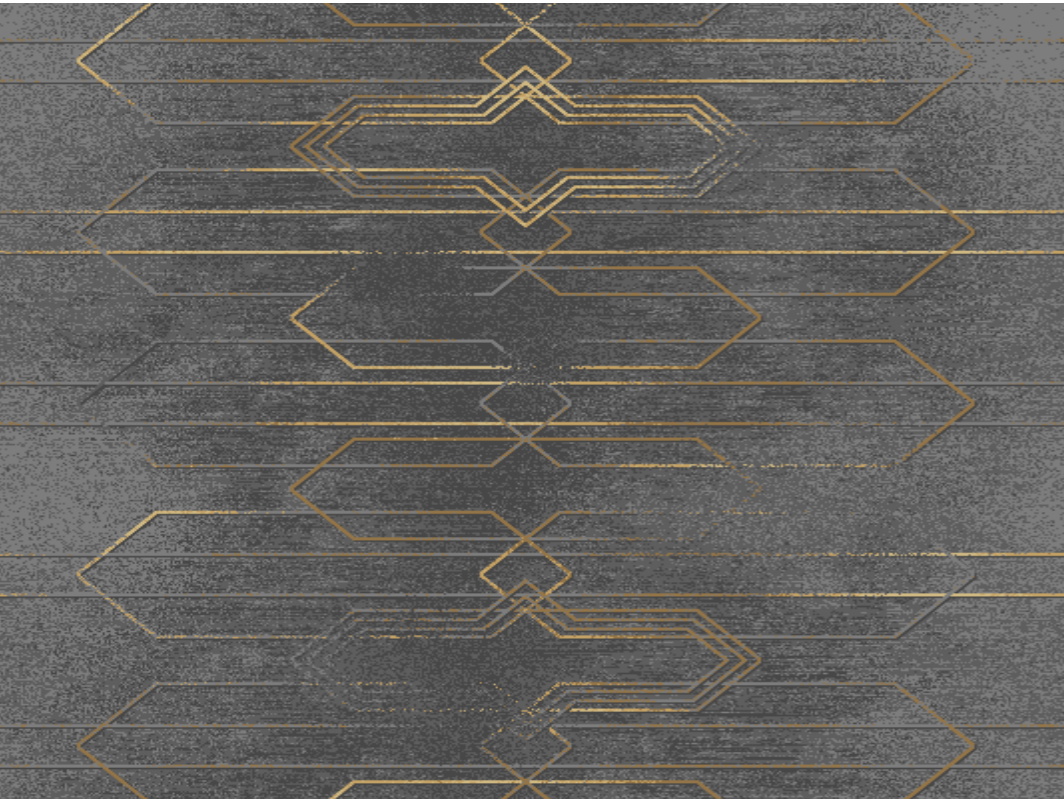
MOKKA 8802

29. UPHOLSTERY

VELLUTO Mika





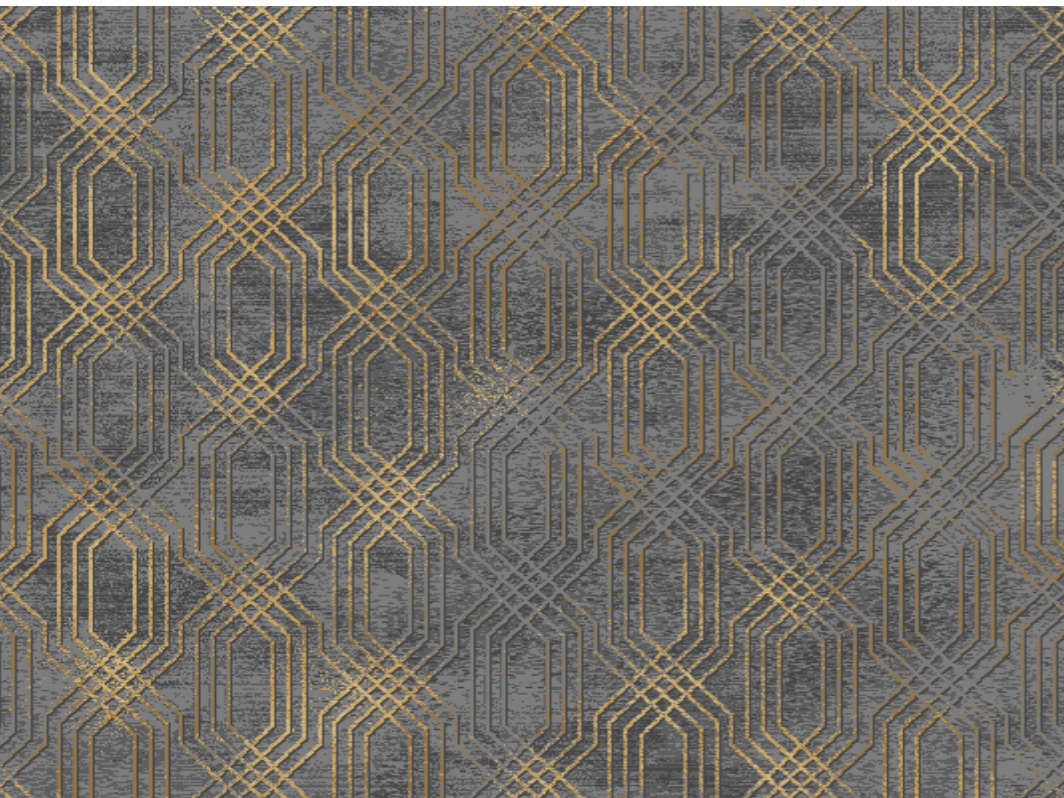
Onyx and Gold



CORRIDOR

axminster carpet
6540/809

-  B31
-  B29
-  A28
-  C03
-  C04
-  C05



ROOM

axminster carpet
6541/809

-  B31
-  B29
-  A28
-  C03
-  C04
-  C05



28. UPHOLSTERY

DELUXE
Graphite

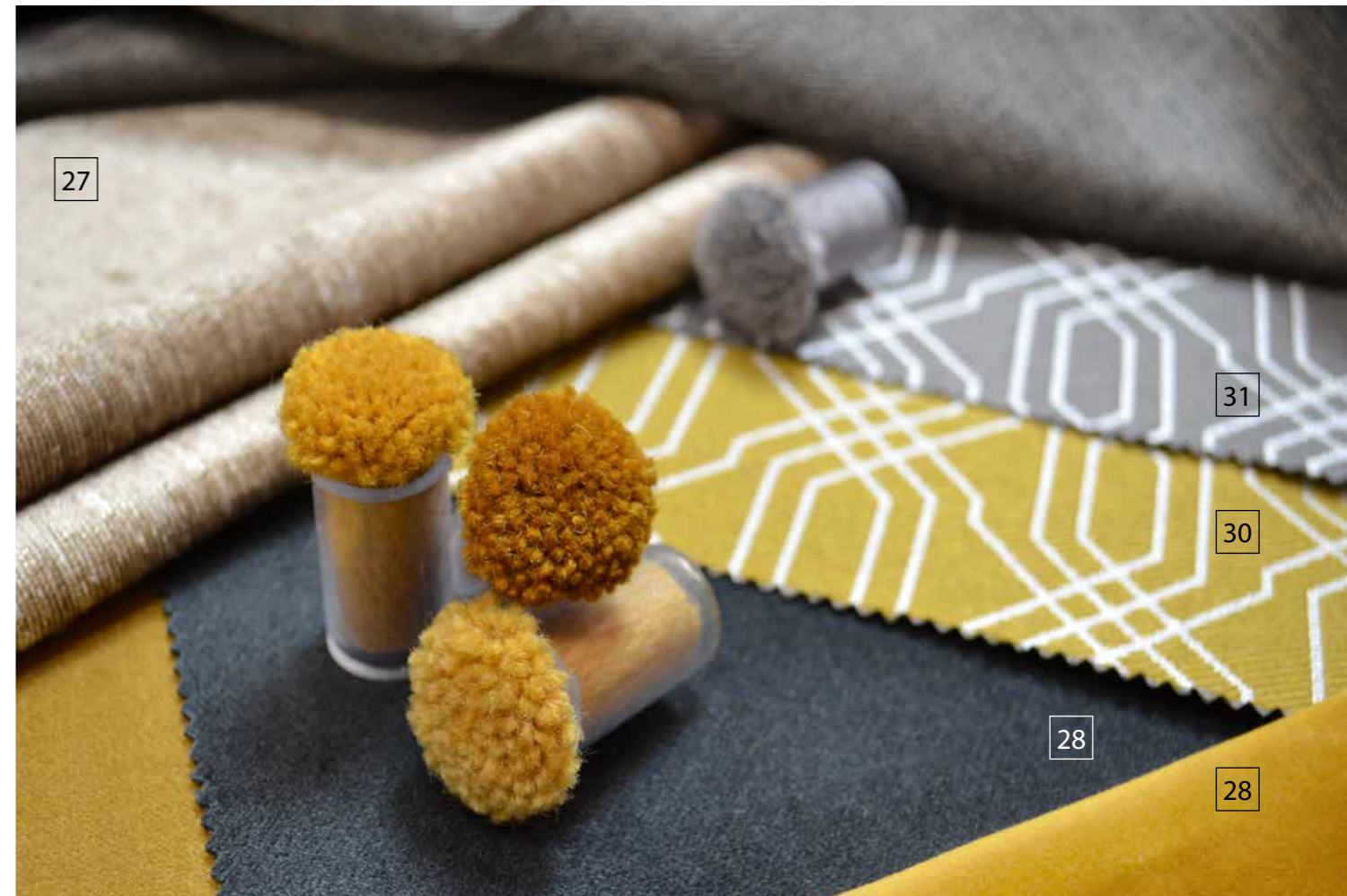


30. CUSHIONS

GROSVENOR
MERCURY
7762



28



27

31

30

28

28

Silver and Powder

38

34

33

35

36

37

6

Silver and Powder

33. AXMINSTER CARPET

6542/801

-  G01
-  C01
-  C02
-  B14
-  A13
-  C05
-  U12
-  439



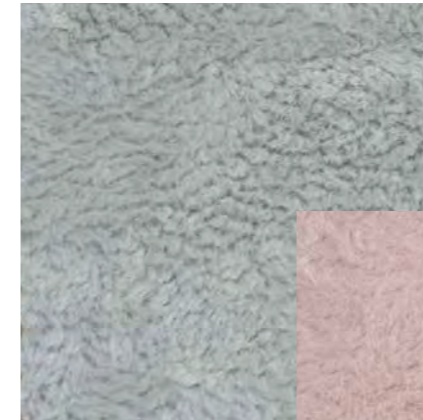
28. WALLPAPER

TYPE II 3042-1



34. WALLPAPER

TYPE II 3050



36. ARMCHAIR COVERING

BARBAA GLASS - 197

3. SOFA COVERING

BARBAA VIOLET - 105

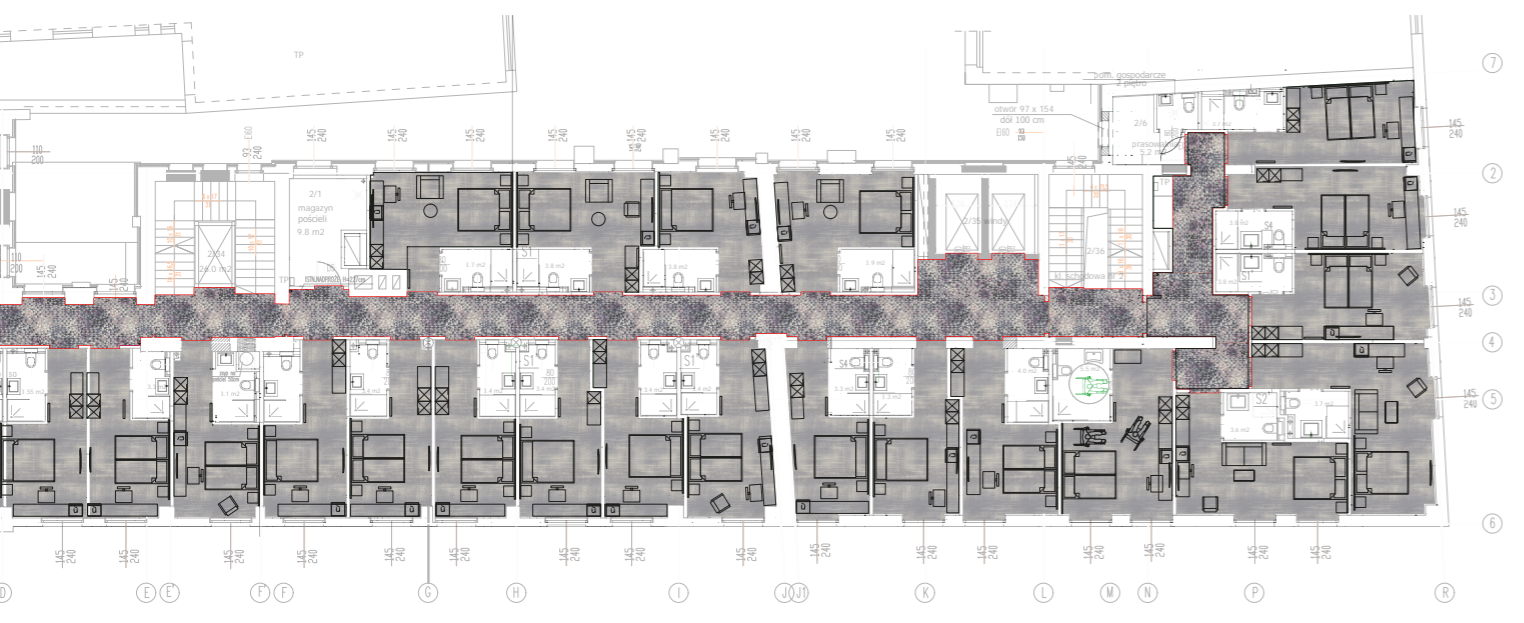


37. CUSHION

Elixir - Ebony 7755



Silver and Powder



G01



C01



C02



B14



A13



C05



U12

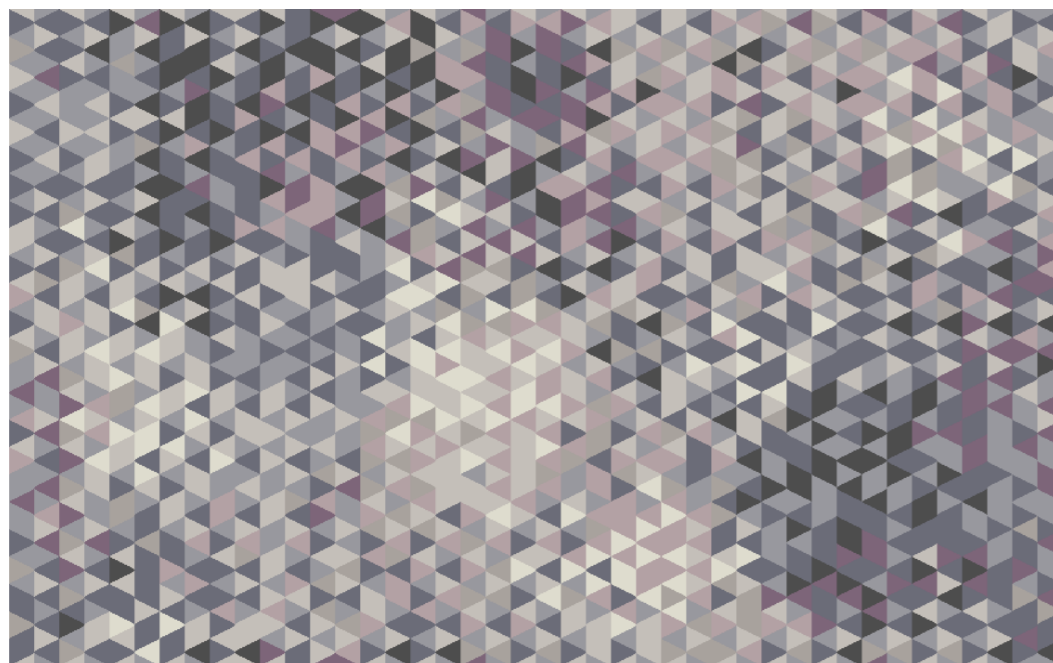


439



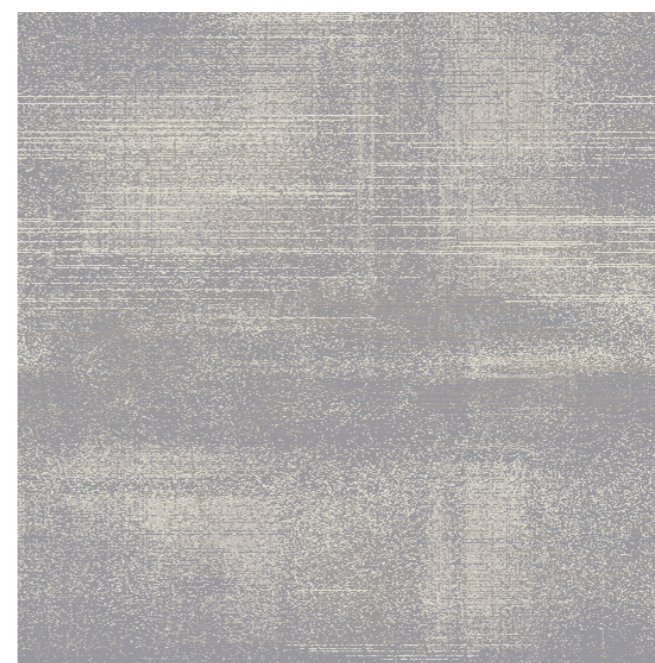
CORRIDOR

axminster carpet
6543/801



ROOM

axminster carpet
6544/801



G01



C01



C02



B14





AXPROCONCEPT

AxPro Concept Sp. z o.o.
ul. Wiejska 86A, 58-506 Jelenia Góra, Poland
tel. +48 795 522 022, fax: +48 75 646 74 87
info@axprocarpets.com
www.axprocarpets.com