



AXPRØCONCEPT

Colours Collection

Contract Wallpaper





AXPROCONCEPT

Colours Collection

Contract Wallpaper

Ax Pro Concept
Contract Wall



Colors is a collection of stylish and modern designs, grouped in 7 color palettes.

The possibility of their individual modification allows for creating unique and perfectly harmonious interiors.

Design of vinyl wallpapers, textile on the bottom, AxPro Contract Wall provides the highest resistance for damage and ease of use.

As part of the AxPro Construction offer, we provide an assembly service that guarantees durability for many years in the most demanding commercial spaces.

Colours to kolekcja stylowych i nowoczesnych wzorów, pogrupowanych w 7 palet kolorystycznych.

Możliwość ich indywidualnych modyfikacji pozwala na kreowanie unikalnych i doskonale harmonijnych wnętrz.

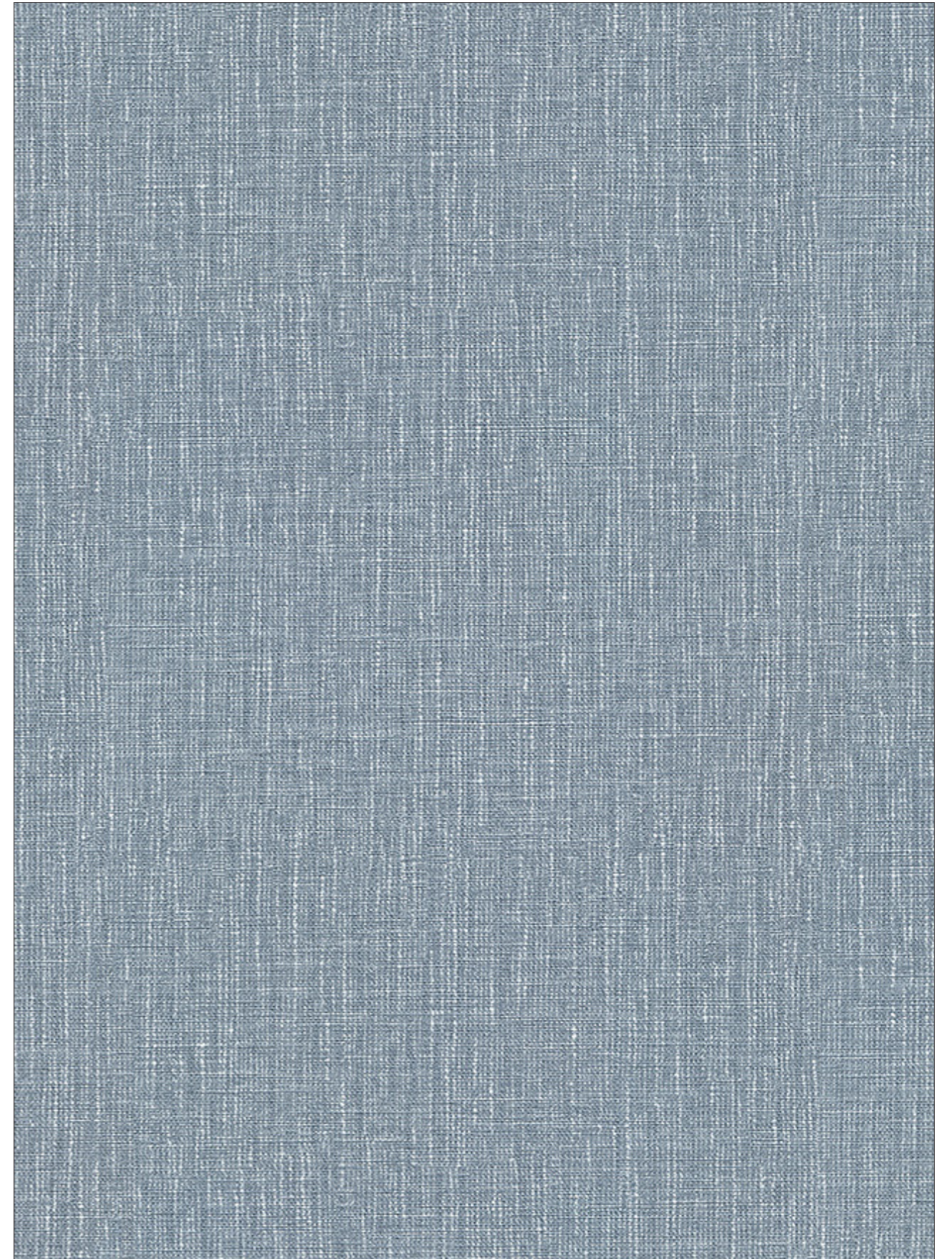
Konstrukcja tapet winylowych, na spodzie tekstylnym, AxPro Contract Wall zapewnia najwyższą odpornością na uszkodzenia i łatwość użytkowania.

W ramach oferty AxPro Construction zapewniamy usługę montażu, gwarantującą trwałość na długie lata, w najbardziej wymagających przestrzeniach komercyjnych.

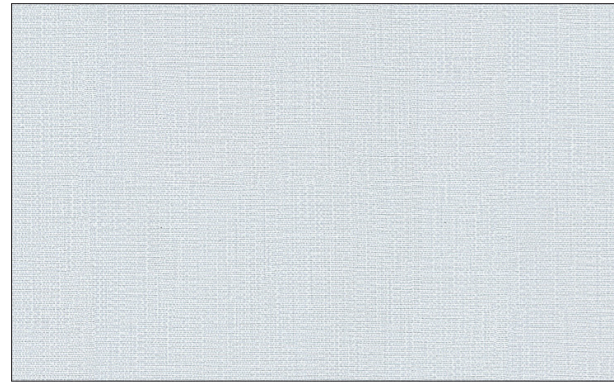


NN 5013b

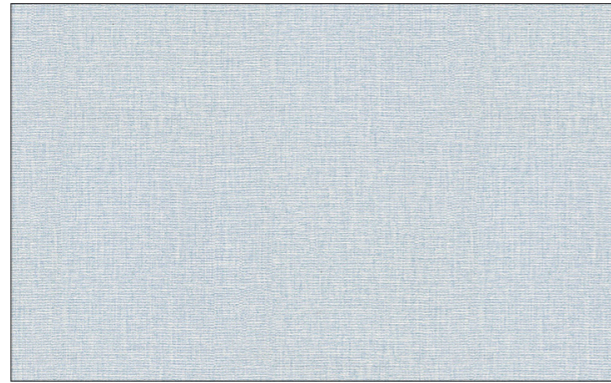
Aquamarine



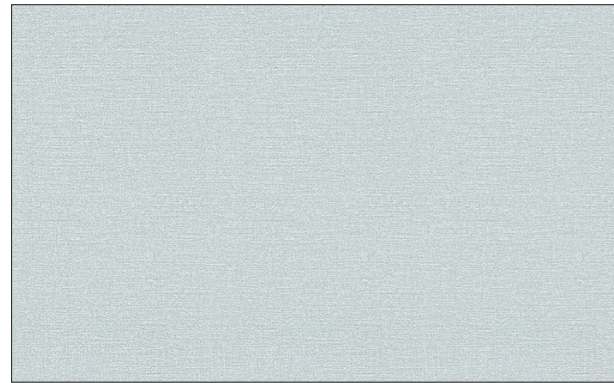
NN 5013b



NN3005b



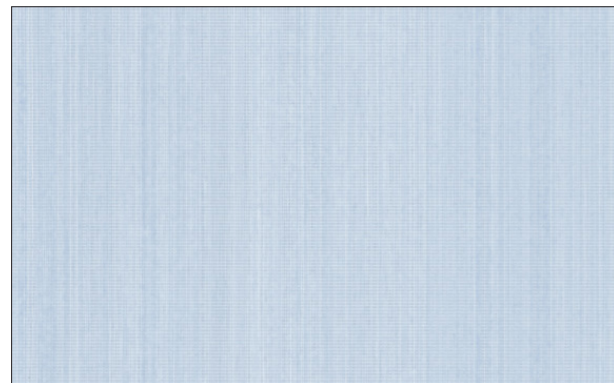
NN7005b



NN1005b



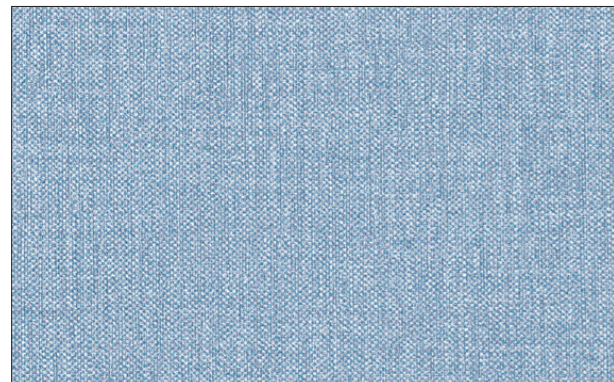
NN8005b



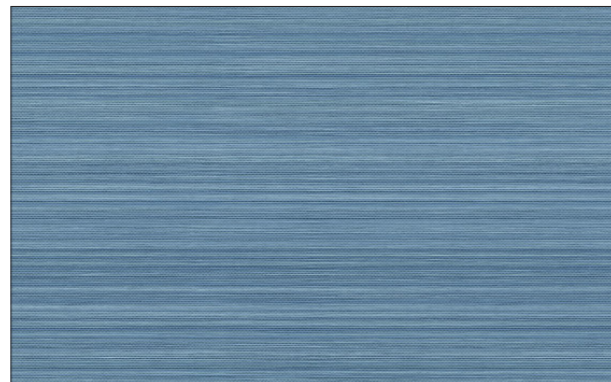
NY7222b



NN2007b

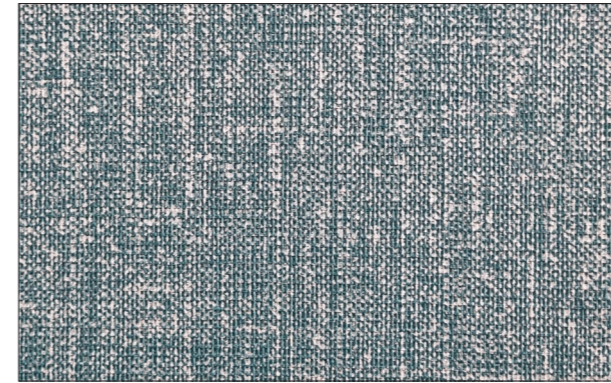


NY7211b

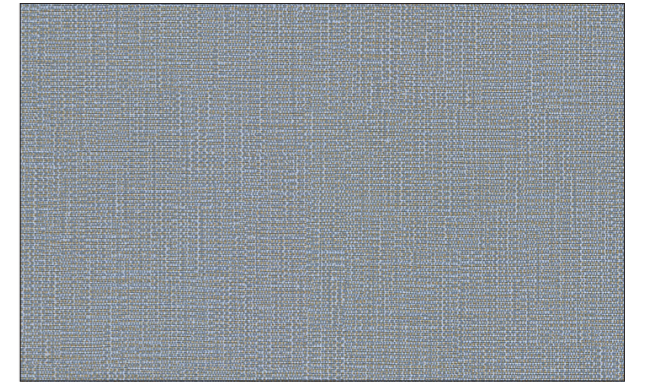


NY4011b

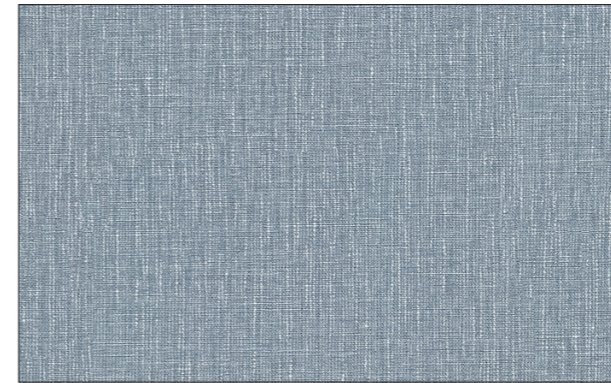
Aquamarine



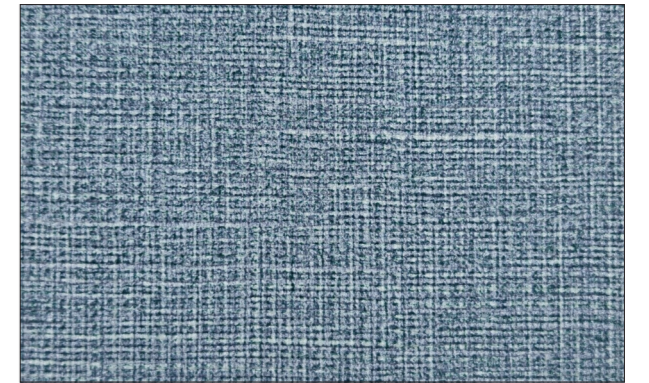
MWB6005b



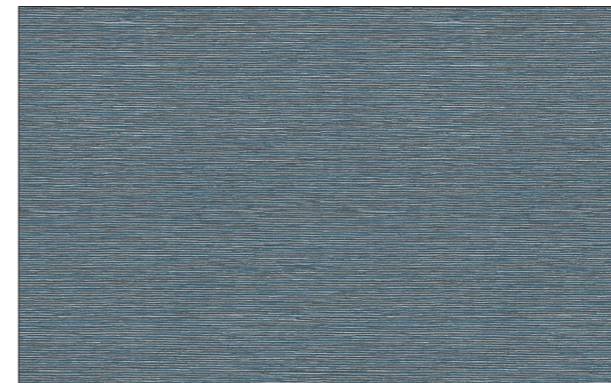
NN3006b



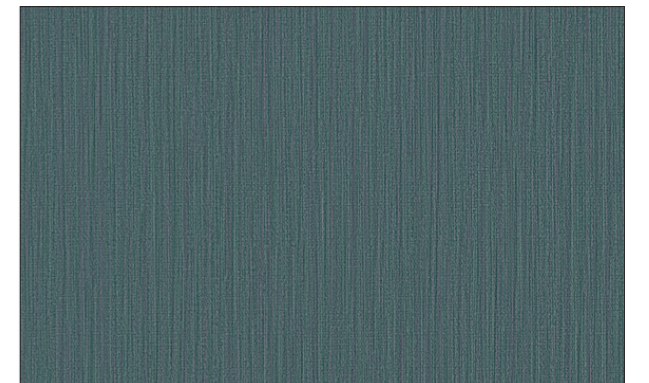
NN5013b



NY7782b



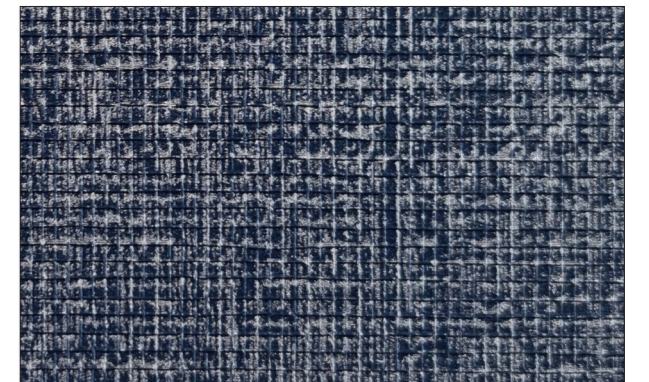
NN2013b



NY2363b



NY5396b



BH4008*

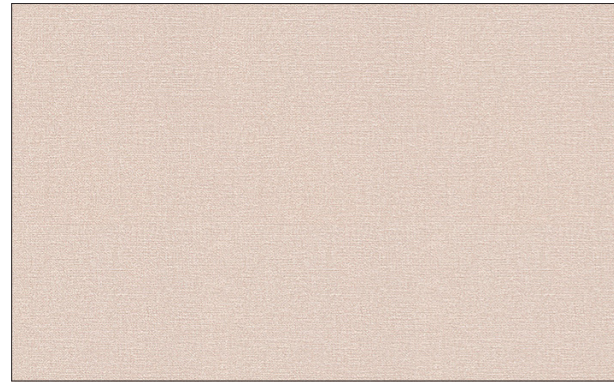


NY36219c

Morganite



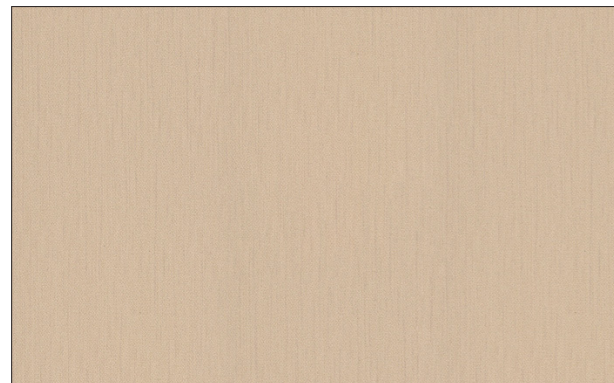
NY36219c



NN1009b



NN3003b



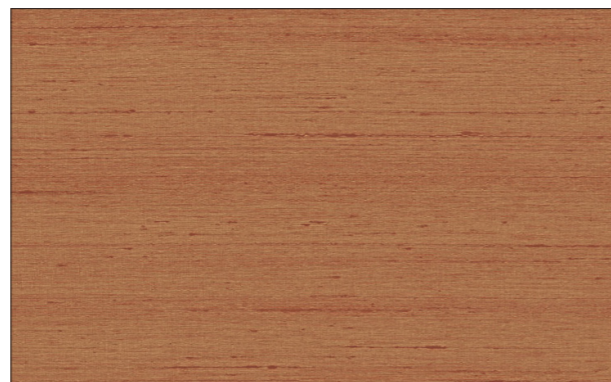
NN4011b



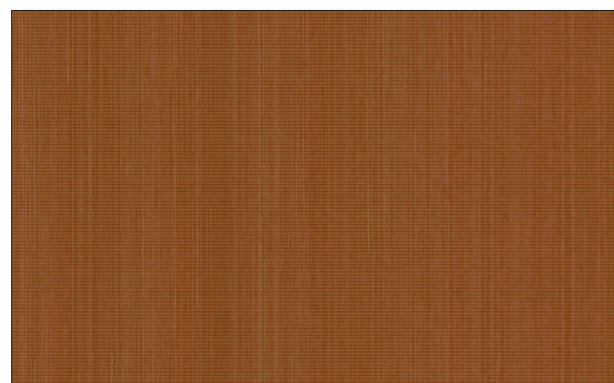
NN5011b



NN8017b



NY36219c

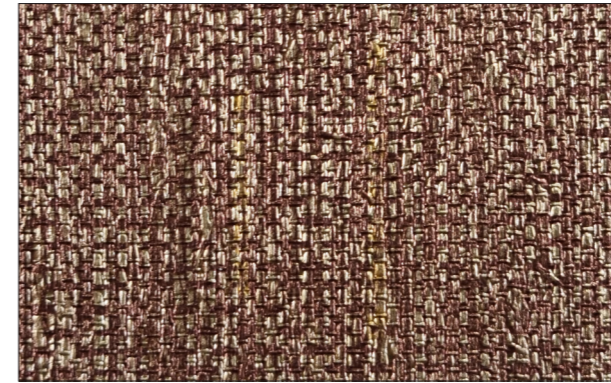


NY7221b

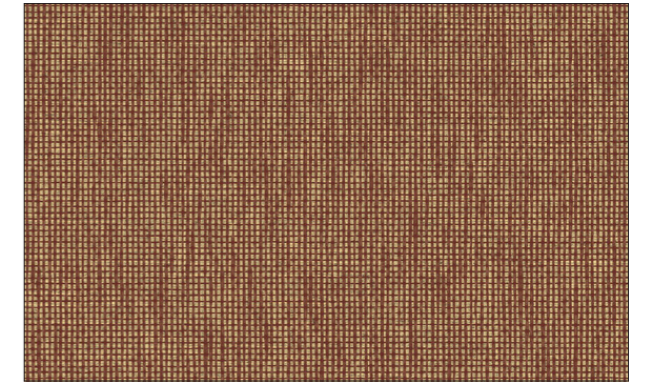


NN5101b

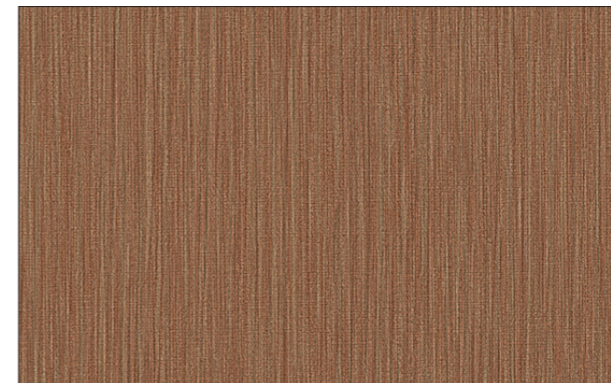
Morganite



NY67111c



NY74611c



NY2361b



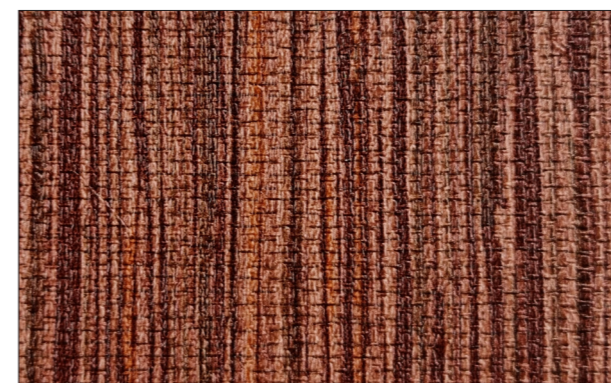
NN3020c



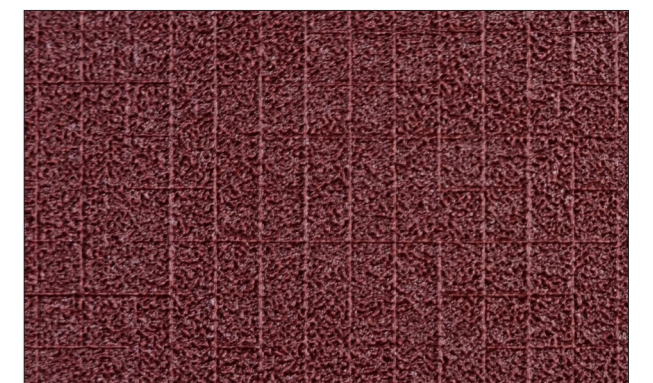
NY2367b



NY67110c



NY5398b



BH7020*



NN2014b

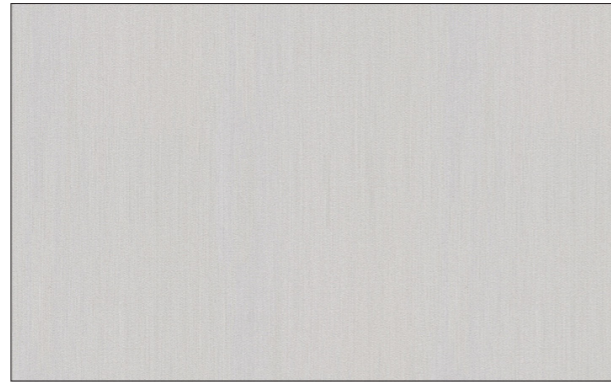
Selenite



NN2014b



NN2008b



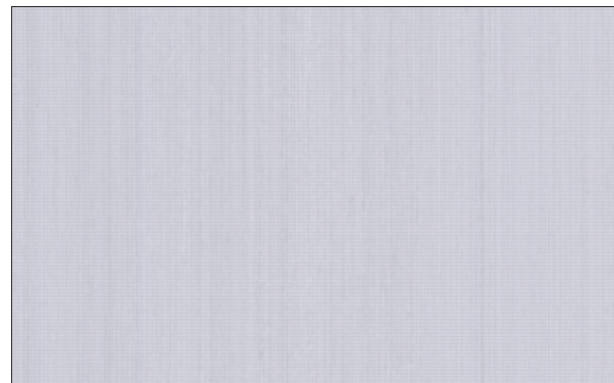
NN4007b



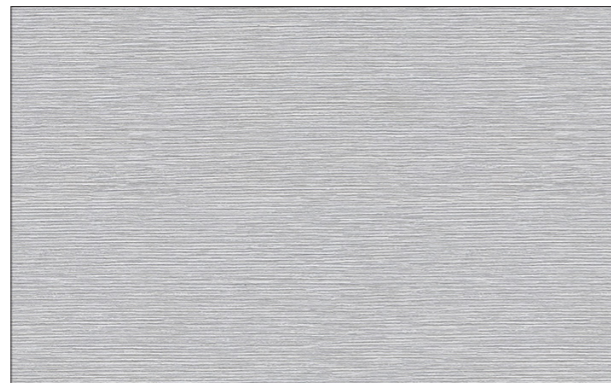
NN8001b



NY6718b



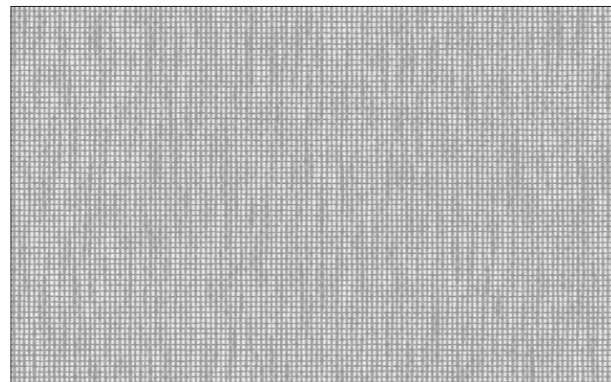
NY7229b



NN2014b

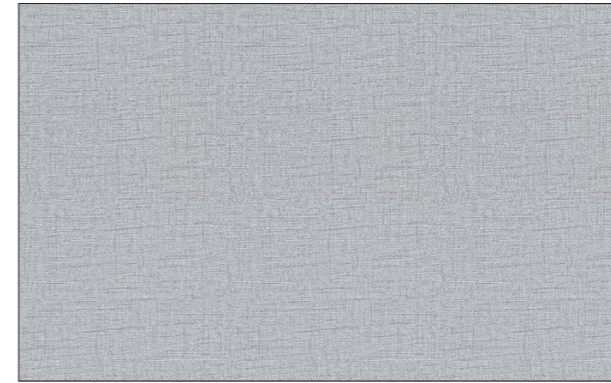


NN3007b

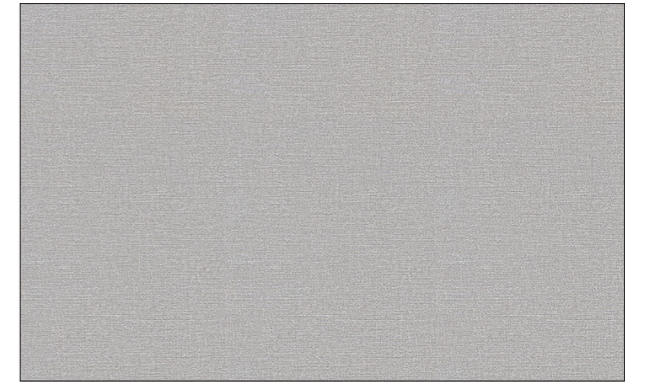


NY7468b

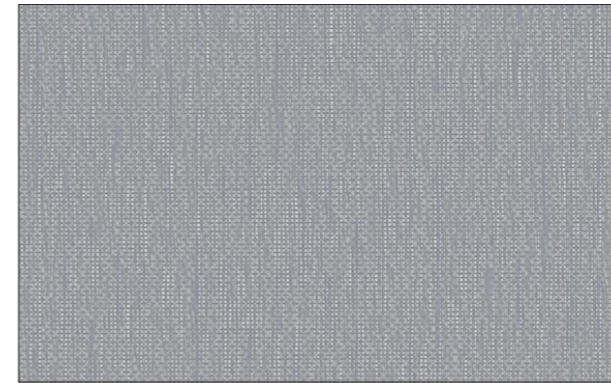
Selenite



NN9007b



NN1007b



NY6716b



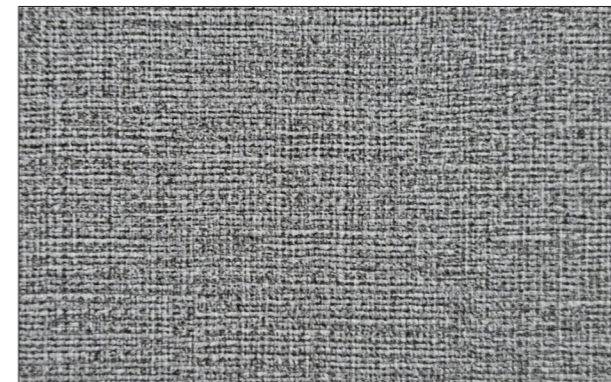
NN1006b



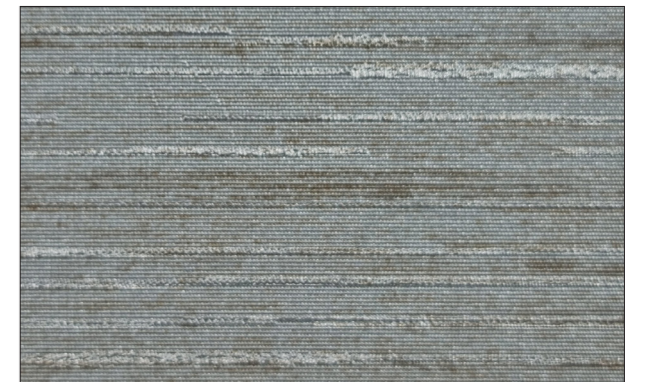
NY53912b



NY53911b



NY7789b

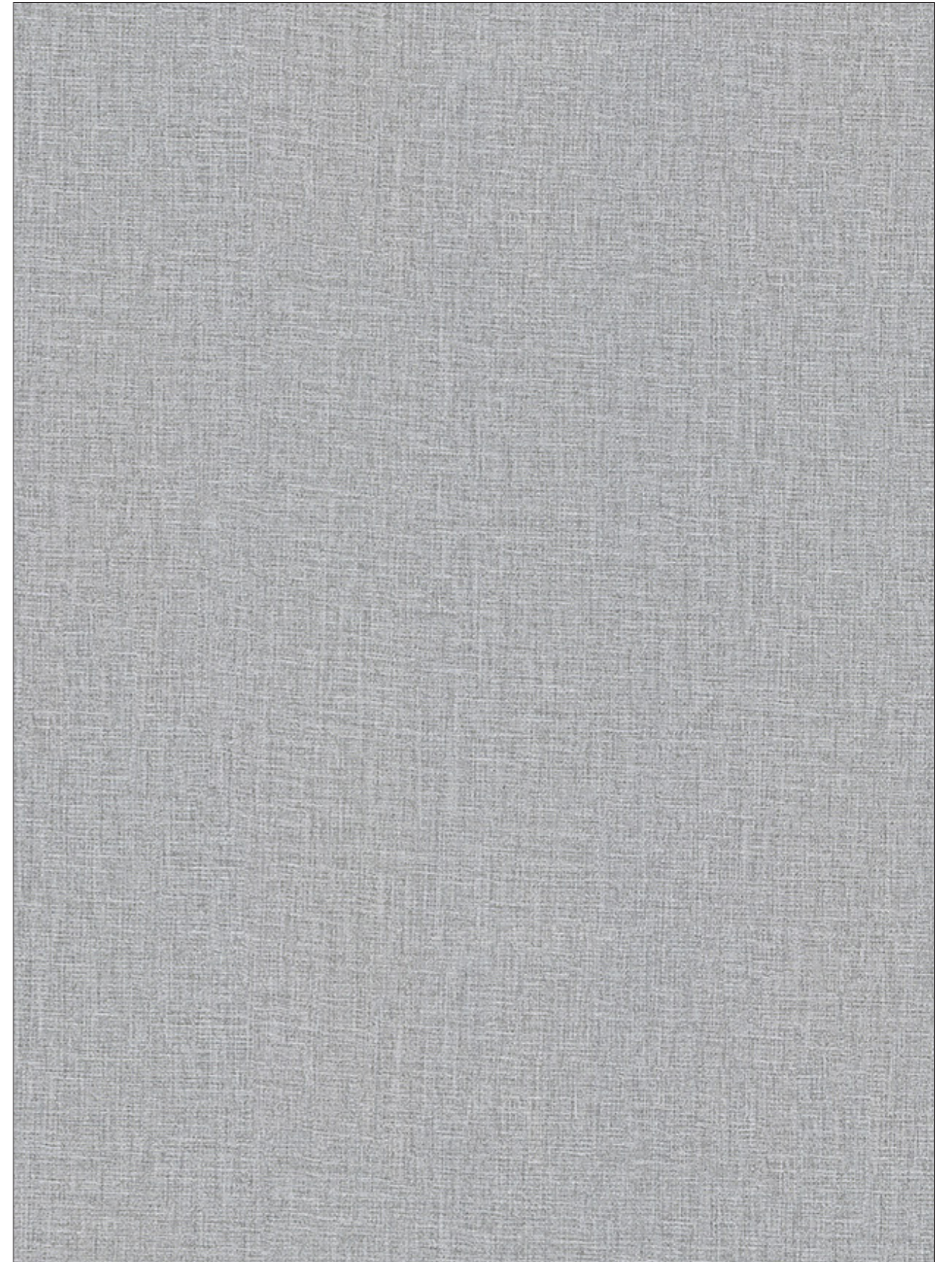


NY36221c

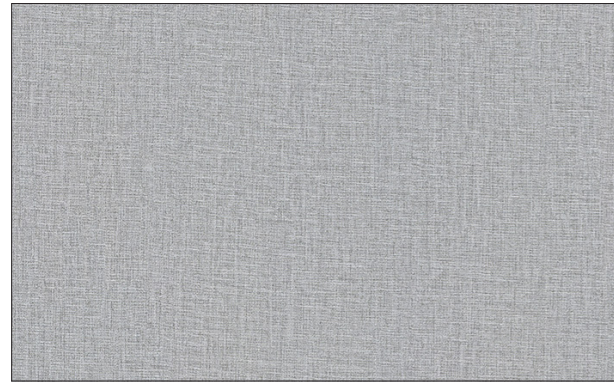


NN7007b

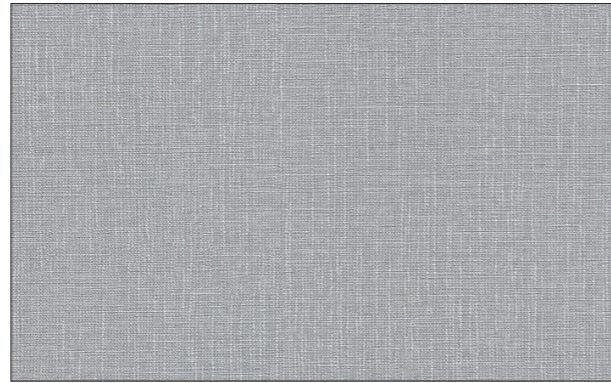
Onyx



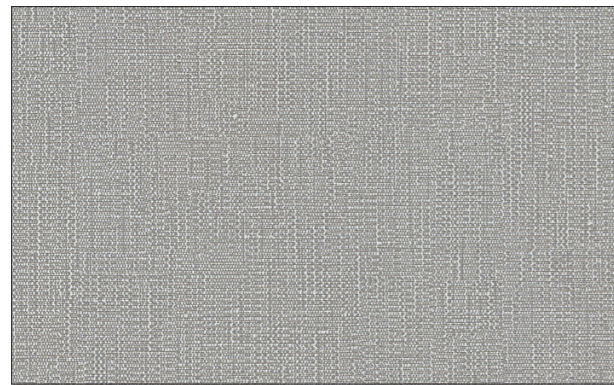
NN7007b



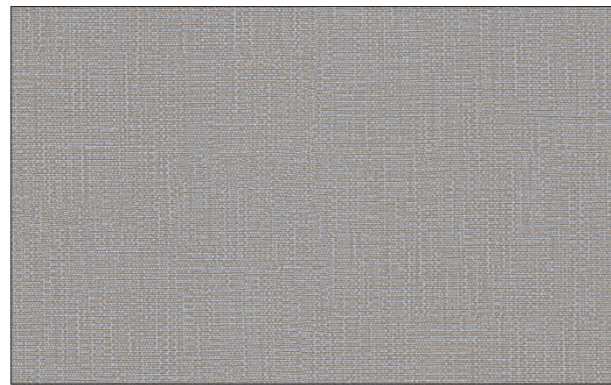
NN7007b



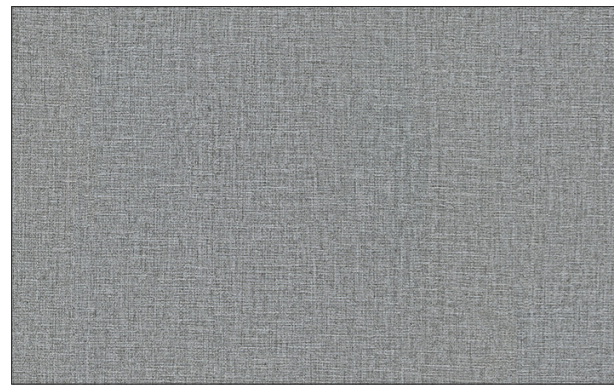
NN5008b



NN3008b



NN3016b



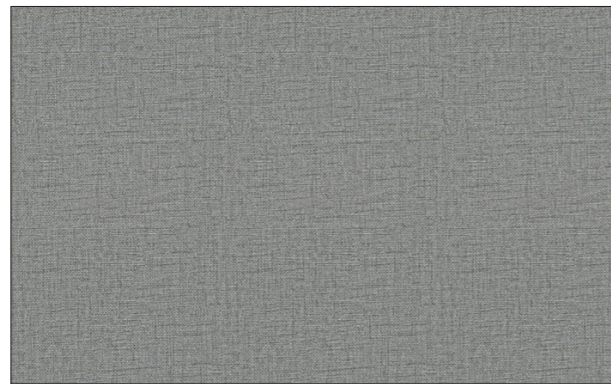
NN7013b



BB2010

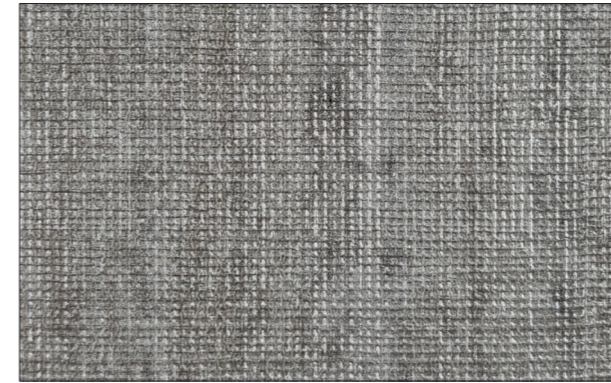


NN8006b

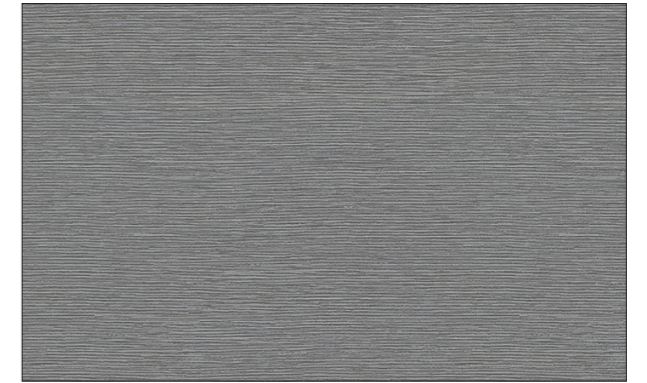


NN9008b

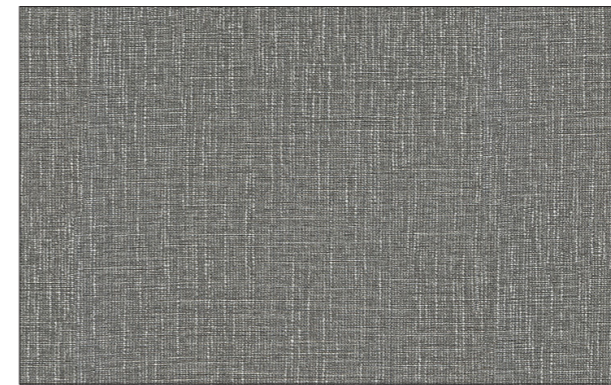
Onyx



NY72213b



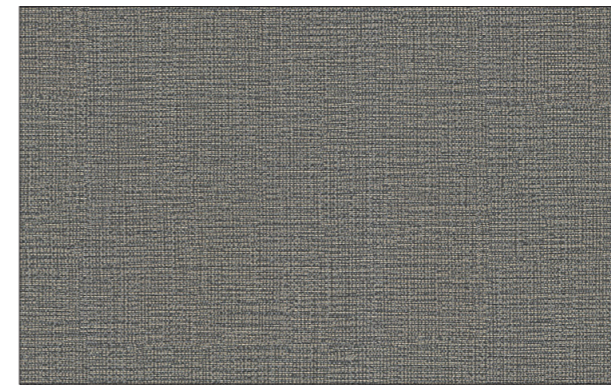
NN2009b



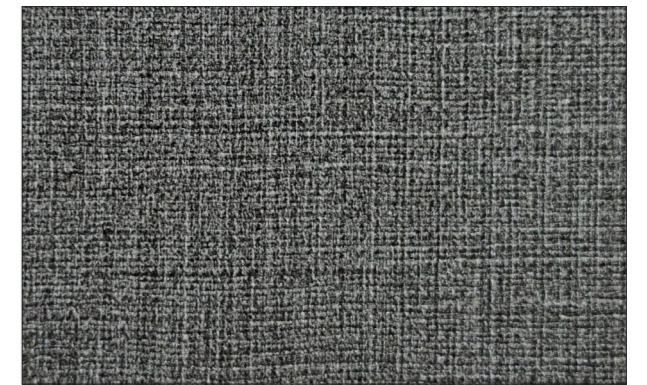
NN5015b



NN8007c



NN3017b



NY77813b



BE9009



BE9017



NN9010b

Quartz



NN9010b



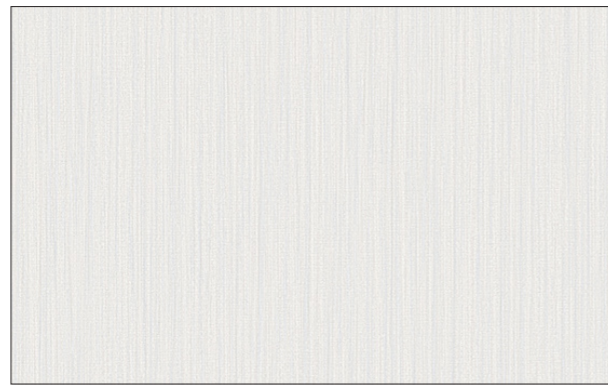
NY7213b



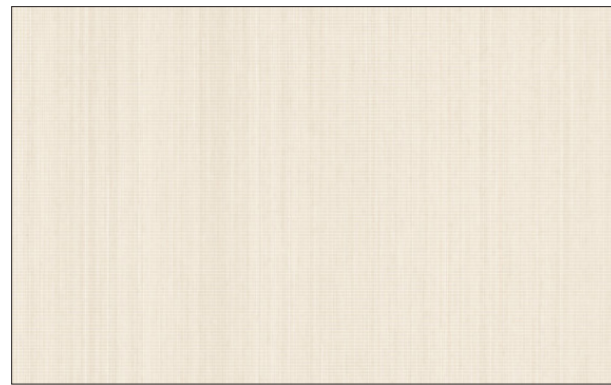
NY36217b



NY3628b



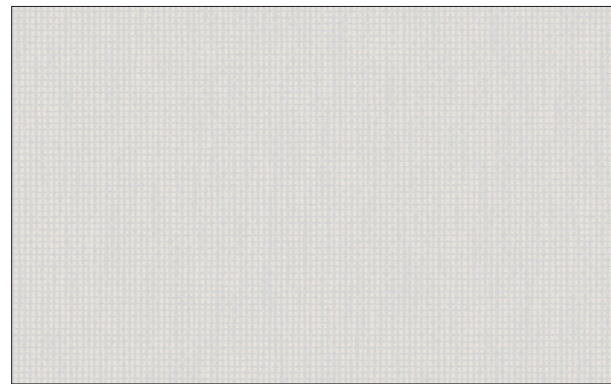
NY2364b



NY7224b



NN8013b



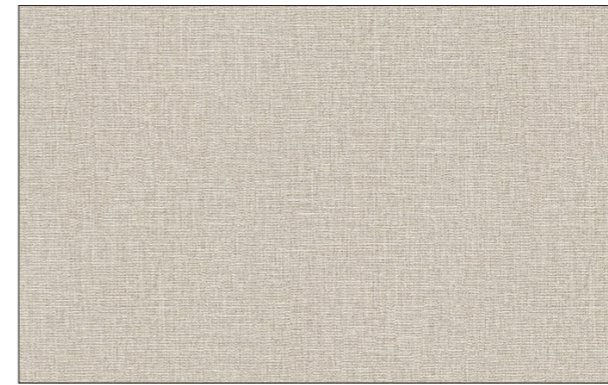
NY7464b



NN7002b

Quartz

Colours Collection



NN7003b



NN2003b



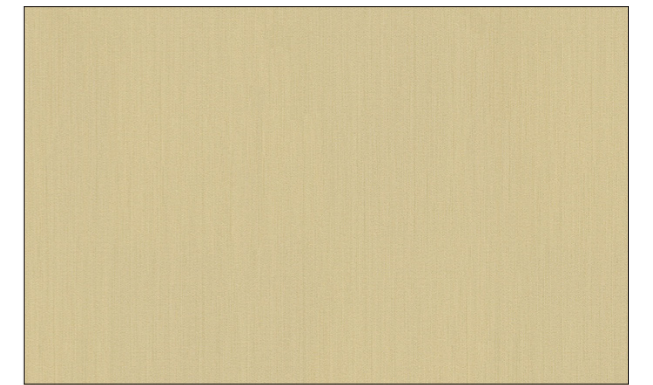
NN9010b



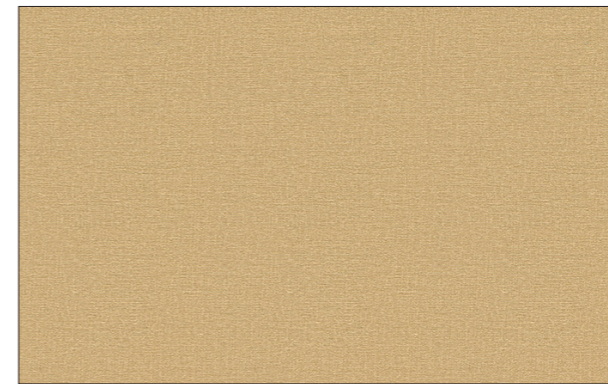
NN8002b



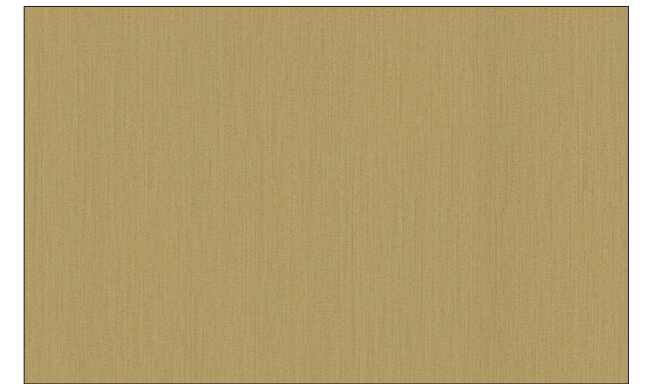
NN7009b



NN4004b



NN1010b



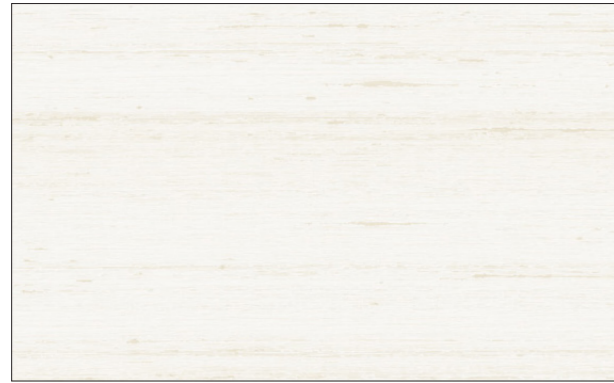
NN4012b



NN3003b



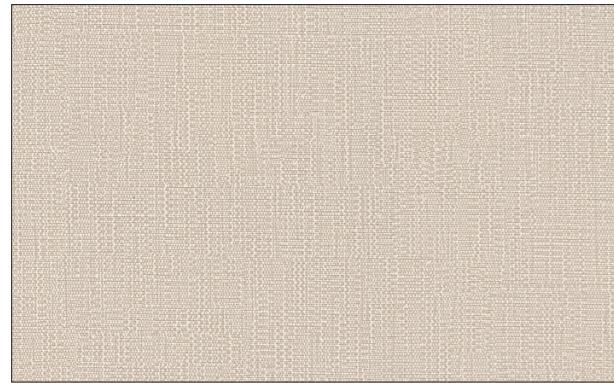
NN3003b



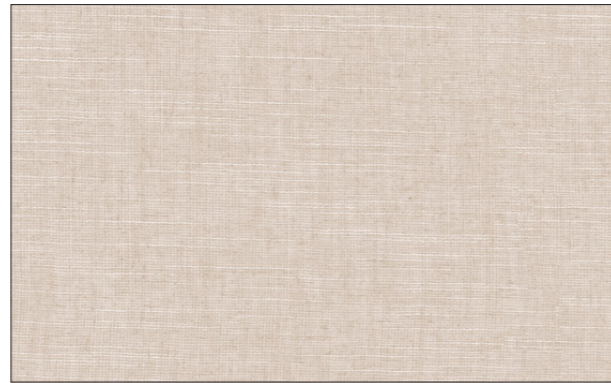
NY36213b



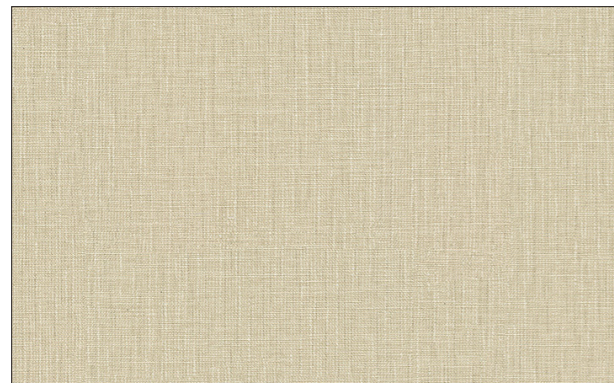
NN7004b



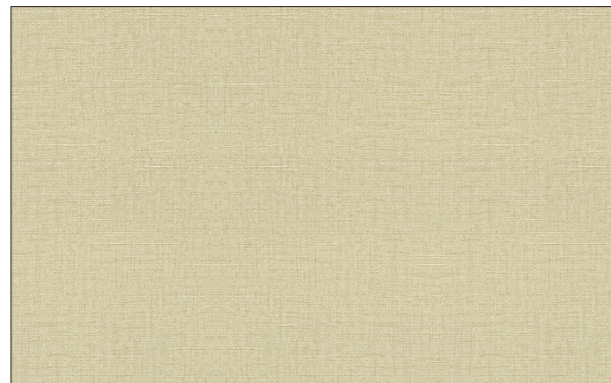
NN3003b



NY7788b



NN5002b



NN9002b



NN2003b



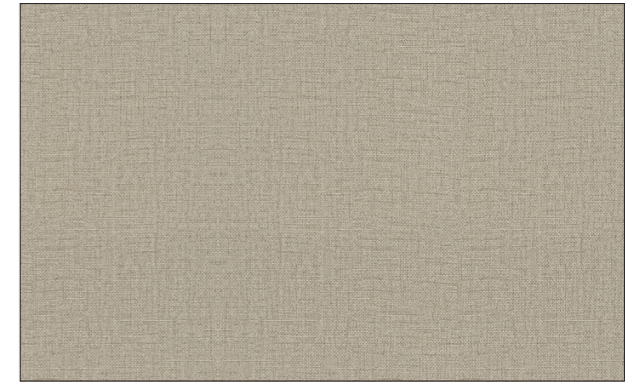
NY3627b

Topaz

Colours Collection



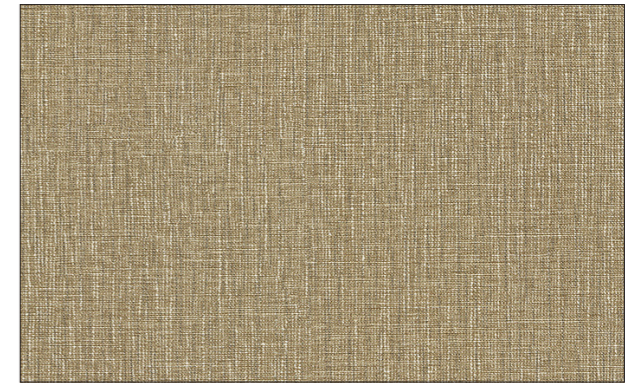
NY6714b



NN9003b



NY6719b



NN5017b



NY2369b



NY7463b



NY36211b



NY40117c



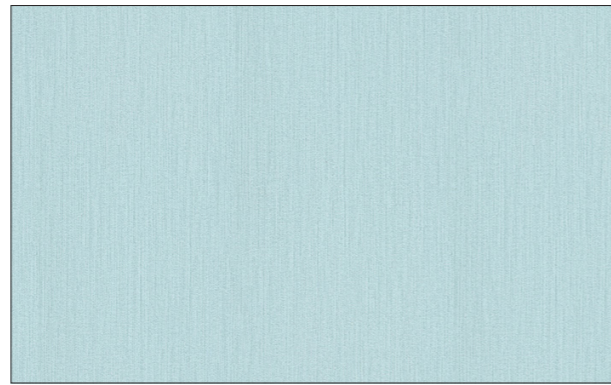
NN8016b



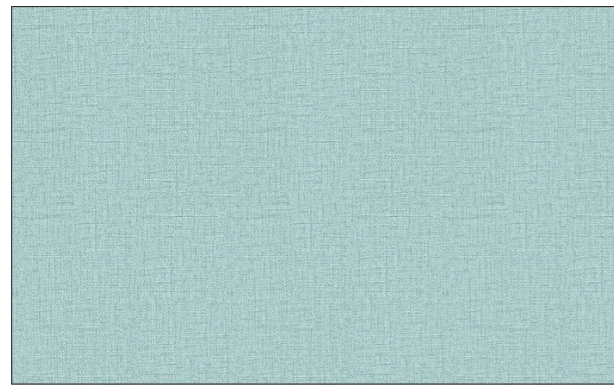
NN8016b



NN3013b



NN4005b



NN9006b



NN8016b



NN5014b



NY6711b



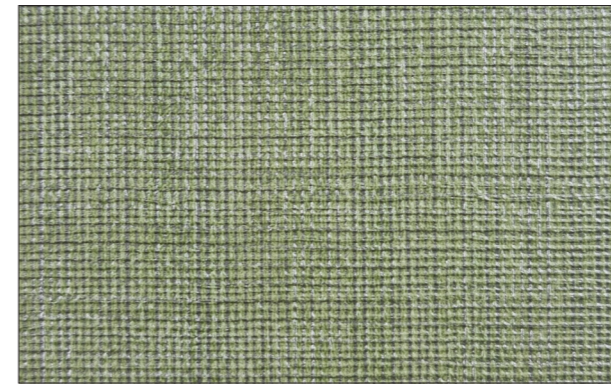
NY36220c



NN4014b

Tourmaline

Colours Collection



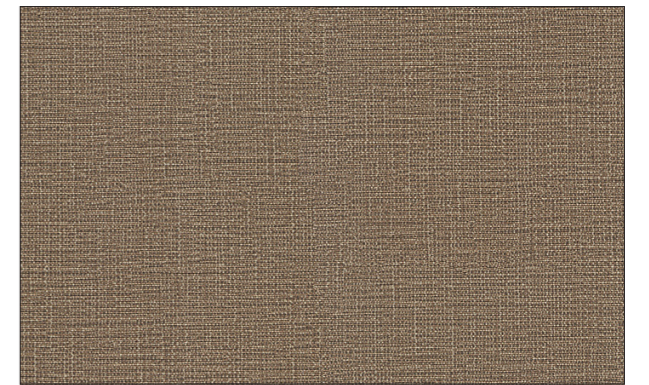
NY7226B



NY7781b



NY6713b



NN3019b



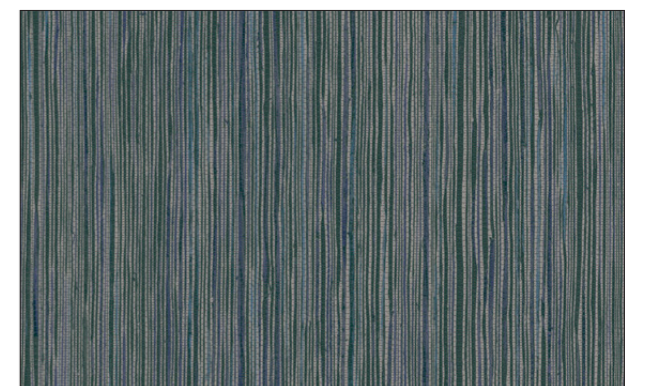
NY36210b



NN2016b



NN7012b



NY5396b

COMMERCIAL WALLCOVERING SPECIFICATIONS

PHYSICAL PROPERTIES

BACKING MATERIALS: FABRIC BACKED

SURFACE MATERIALS: VINYL COATED, WATER BASED INK

TOTAL WEIGHT: 450 g/m², *(BH4008, BH7020 - 340 g/m²)

ROLL SIZE: 1,3 x 30 m

WASHABLE, COLORFAST, SCRATCH PROOF

FIRE RATING

EUROPE STANDARD: EN13501-1 Class B-s1,d0

SMOKE EMISSION: s1

FLAME DROPLETS: d0

USA STANDARD: ASTM E84 Class A

FLAME SPREAD: 10

SMOKE DEVELOPED: 10

ANTI-MICROBIAL FEATURES

STANDARD: GB/T2423.16-2008 Class 0-1

AxPro Concept wallcoverings contain mold resistant additives to resist the growth of mold and mildew under normal conditions. However, wall surface must be clear of mold and no water vapor or moisture infiltration and use only mold-resistant glue and primer while hanging.

ECO-FRIENDLY FEATURES

NO FORMALDEHYDE

NO HEAVY METALS

LOW VOC

CE CERTIFIED



AXPROCONCEPT

AxPro Concept Sp. z o.o.
58-506 Jelenia Góra, ul. Wiejska 86A
tel: +48 795 522 022
info@axproconcept.com
www.axproconcept.com